

Lifestyle Series

Ranch Homes

*"A House is a Home
when it Shelters the Body and Comforts the Soul."* - Phillip Moffit

Lifestyle Series

Inspiring Designs for a Comfortable Way of Living



Stratford Homes®

LIMITED PARTNERSHIP

custom modular designs



Lifestyle Series

Stratford Homes® has been an industry leader in the “systems built” modular home market since 1973. The plans we provide are time tested and thoroughly reviewed for construction and energy efficiency. The knowledge gained while building over 11,000 homes and seeing what customers want and enjoy has allowed us to incorporate the most up-to-date construction techniques and product technologies. Each home is constructed keeping energy efficiency in mind with selected products that use less energy. These products perform as well as or better than other products on the market. These chosen products are a smart choice, and the end result will be a home that has less of an impact on our natural resources and can save you money over time. We feel our homes are more energy efficient because of the quality materials and applications used when it comes to insulation, weatherproofing, and air infiltration. Intelligent building and material choices help create better energy efficiency.

There's no need to worry if you don't find something that perfectly fits your needs and ideas. You can simply customize one of these plans into the perfect design or provide your own unique layout. With the help of Computer Aided Design (CAD) software, our drafting department can easily modify one of our plans or simply create a new floor plan that more closely fits your vision. You are only limited by your imagination and, of course, your budget.

It is important to know that your new Stratford Home can be constructed for a crawl space, full basement or, if your lot allows, a walk-out lower level foundation. So as you browse through the following pages, feel free to daydream to your heart's content. Your exciting journey of bringing this vision to life can begin today with Stratford Homes.

The Lifestyle Series Offers...

Wide Variety

of proven floor plans to assist in the selection process.

Energy Efficiency

through high performance features designed to reduce utility bills and conserve energy.

Exceptional Quality

by building to the highest standards without sacrificing workmanship or quality of materials.

Flexibility

to customize until the home is uniquely...Yours.

Peace of Mind

in knowing your home will be backed by a manufacturer's one year limited warranty covering defects in materials and workmanship.

Sound Investment

through homeownership which is a solid stepping stone to a future of financial security and the single largest creator of wealth for many Americans.



Lifestyle Series

by **Stratford Homes®**

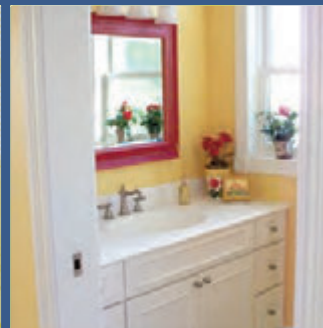
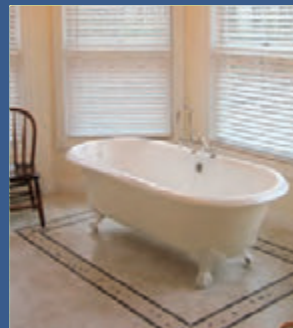
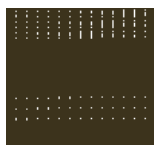


Table of Contents

FLOOR PLAN STYLE PAGE

Ranch	2-47
Bi-Level	48-49
Sun Room	50-51

MODEL NAME	PAGE	MODEL NAME	PAGE
Avalon	24	McKinley	38-39
Belmont	23	Milbridge	30-31
Birmingham	8	Rosedale	14
Boulder	5	Roxboro	2
Charleston II	9	Shannon	4
Colorado	33	Sheldon	25
Concord	20-21	St. Clair	10
Danwood	6	Sterling	36
Eastport	18-19	Sullivan	11
Edgewood	44-45	Summer Grove	40-41
Ferndale	46-47	Sunnybrook	48
Gardendale	7	Sun Room Design A	50
Grafton	42-43	Sun Room Design B	51
Hamilton	34	Trenton	13
Hawthorne	12	Vincent	35
Kendall Park	15	Washington	22
Laurel Bay	28-29	Windsor	49
Marshall	32	Wyoming II	16
Mayfield	3		



Lexboro

This plan features.....

- ❖ Design Ideal for Narrow Lot
- ❖ Master Suite
- ❖ Open Concept
- ❖ Main Level Laundry

1,344 Sq. Ft.

Bedrooms: 3

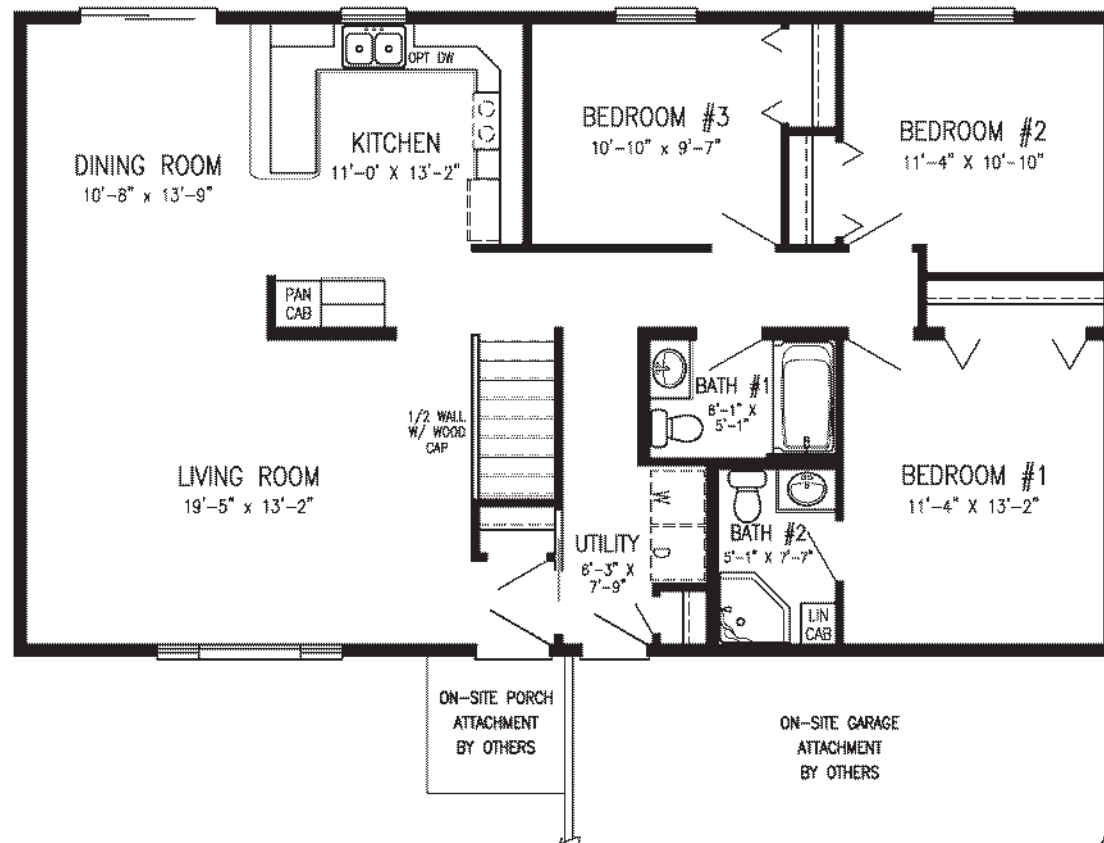
Bathrooms: 1 3/4



HOME SIZE

Depth: 28'

Length: 48'



Mayfield



Artist rendering may contain optional features.

HOME SIZE

Depth: 28'/29'

Length: 50'

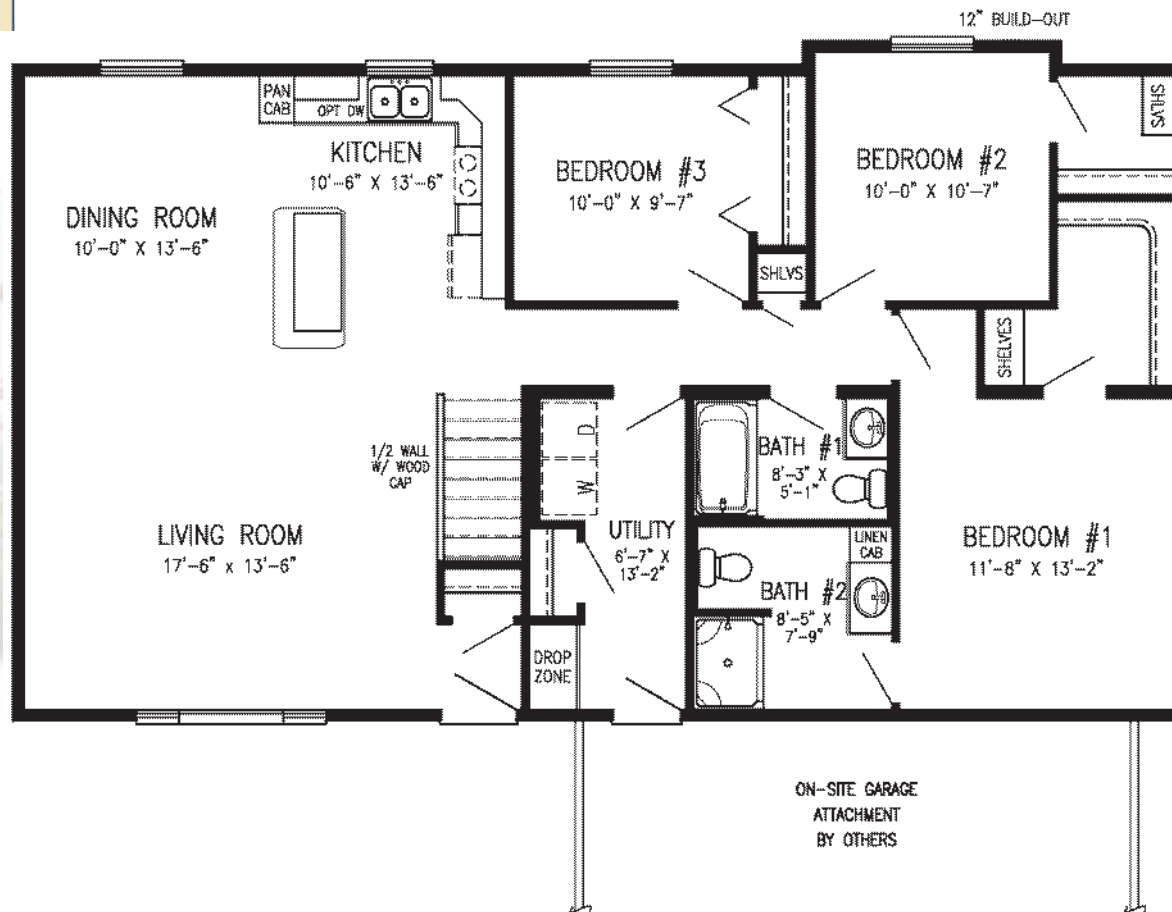
This plan features.....

- ❖ Master Suite
- ❖ Open Concept
- ❖ Main Level Laundry
- ❖ 2 Walk-In Closets

1,411 Sq. Ft.

Bedrooms: 3

Bathrooms: 1 3/4



Shannon

This plan features.....

- ❖ Master Suite
- ❖ Main Level Laundry
- ❖ Continental Master Bathroom
- ❖ Split Bedrooms Layout

1,456 Sq. Ft.

Bedrooms: 3

Bathrooms: 1 3/4

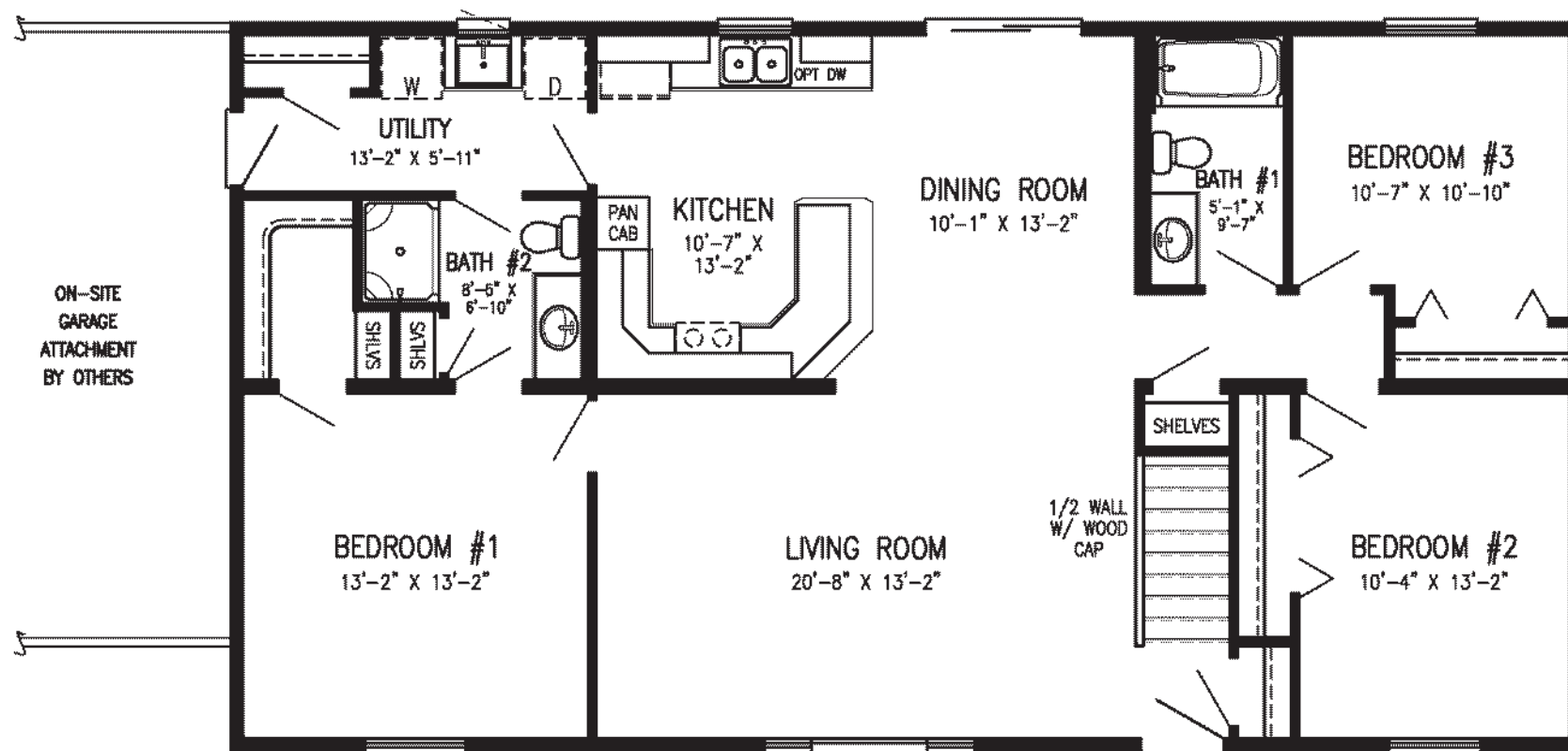


Artist rendering may contain optional features.

HOME SIZE

Depth: 28'

Length: 52'



Boulder



HOME SIZE
Depth: 52' / 54'
Length: 28'

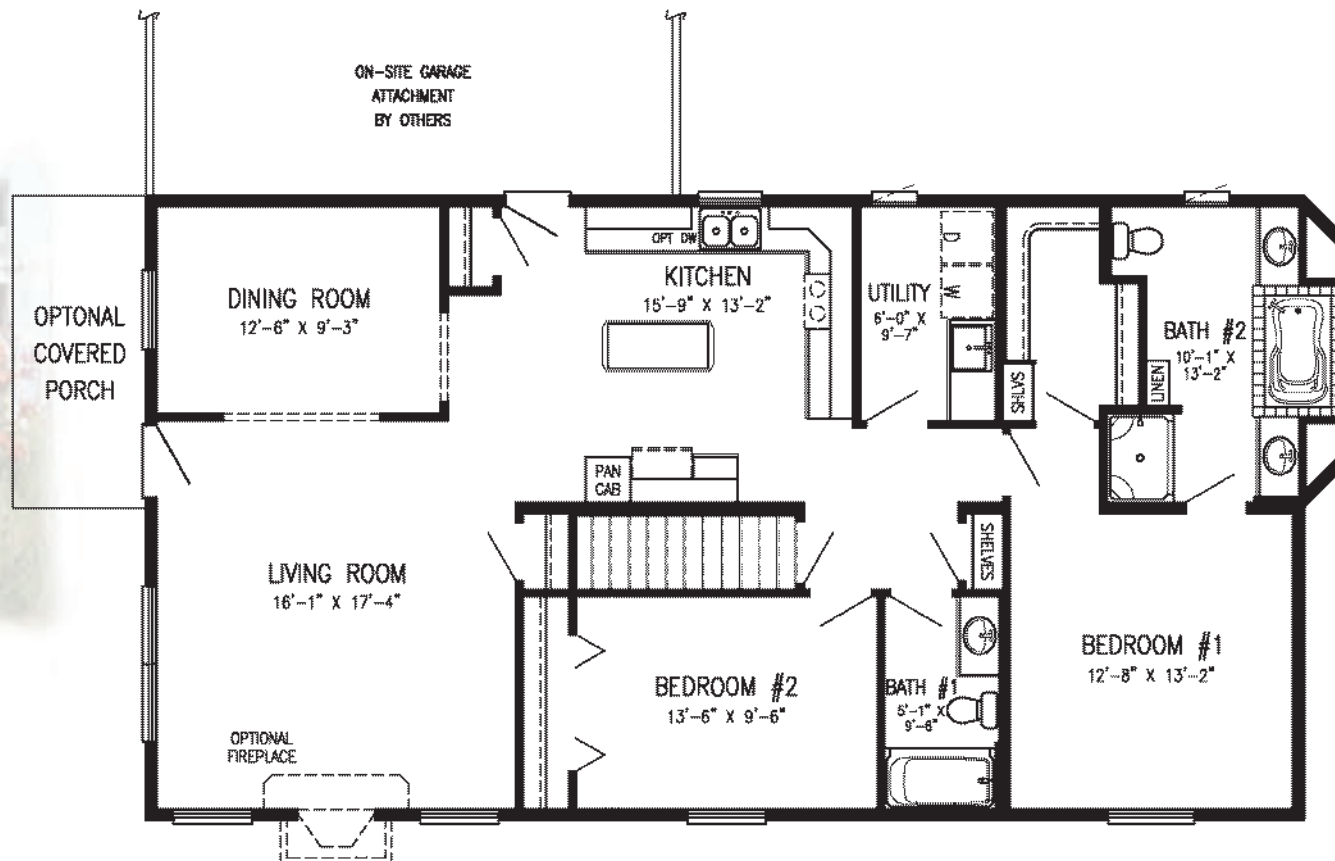
Artist rendering may contain optional features.

This plan features.....

- ❖ Design Ideal for Narrow Lot
- ❖ Master Suite
- ❖ Main Level Laundry
- ❖ Formal Dining Room

1,480 Sq. Ft.

Bedrooms: 2
Bathrooms: 2



Danwood

This plan features.....

- ❖ Design Ideal for Narrow Lot
- ❖ Master Suite
- ❖ Open Concept
- ❖ Split Bedrooms Layout

1,512 Sq. Ft.

Bedrooms: 3

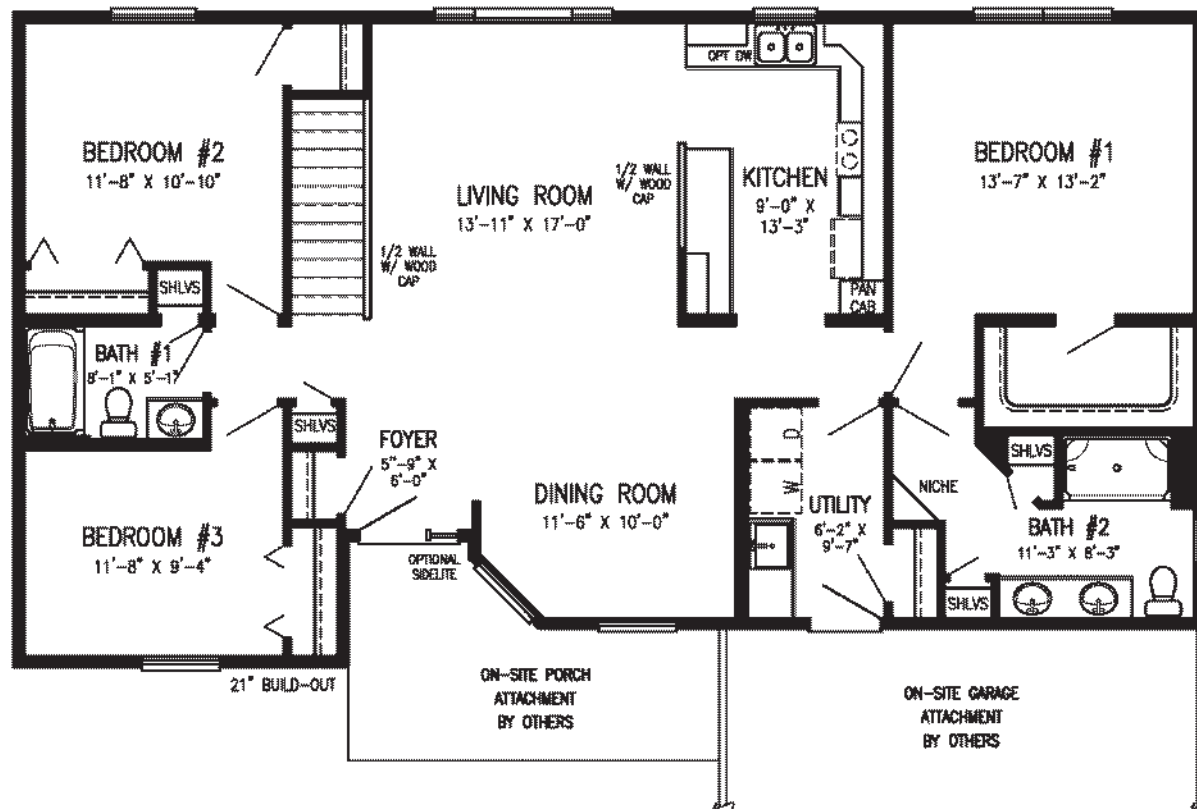
Bathrooms: 1 3/4



HOME SIZE

Depth: 28'/29'9"

Length: 54'



Gardendale



Artist rendering may contain optional features.

HOME SIZE

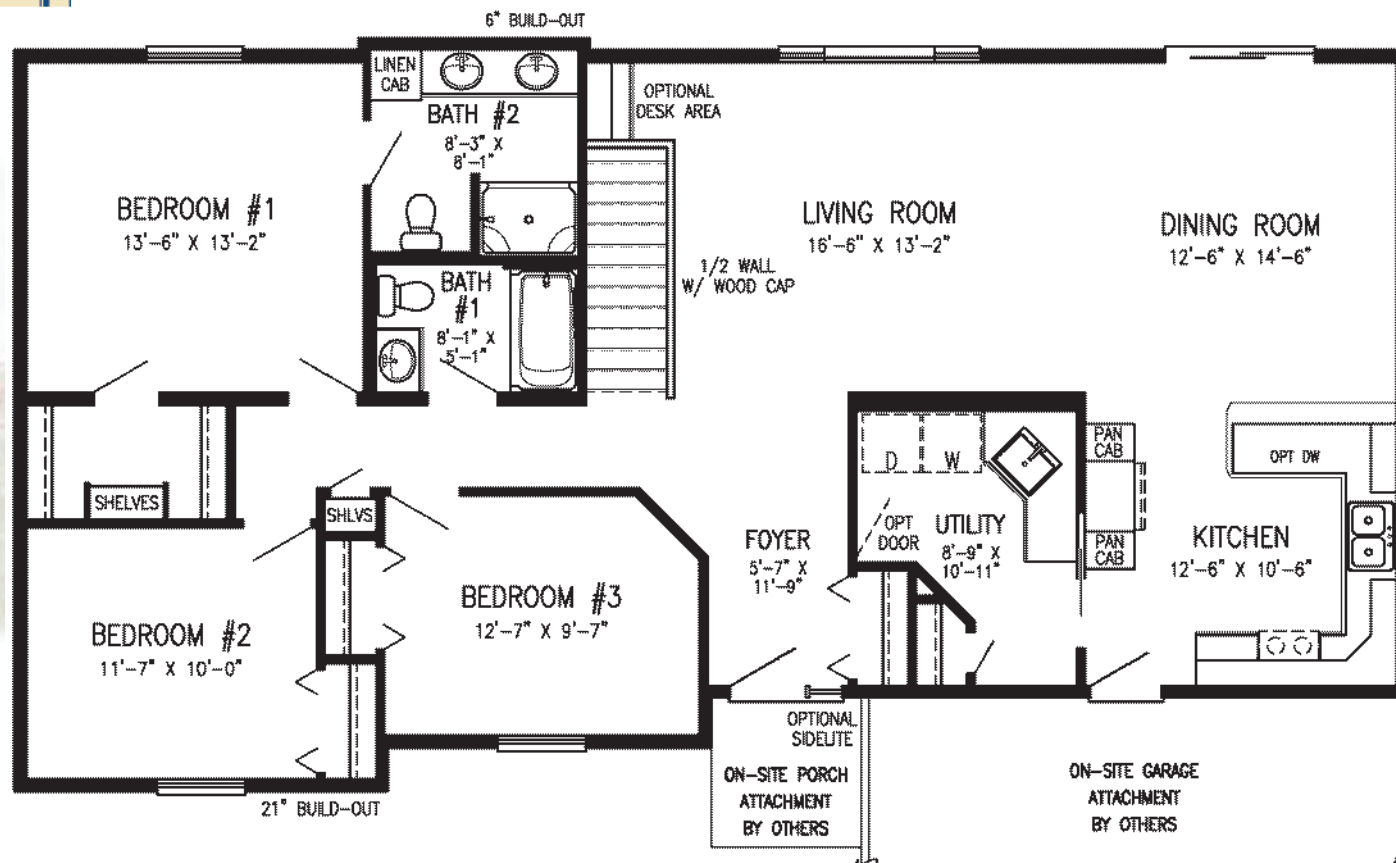
Depth: 28' / 30' 3"
Length: 56'

This plan features.....

- ❖ Design Ideal for Narrow Lot
- ❖ Master Suite
- ❖ Main Level Laundry
- ❖ Kitchen Snack Bar

1,543 Sq. Ft.

Bedrooms: 3
Bathrooms: 1 3/4



Birmingham

This plan features.....

- ❖ Master Suite
- ❖ Main Level Laundry
- ❖ Walk-In Closet
- ❖ Kitchen Snack Bar

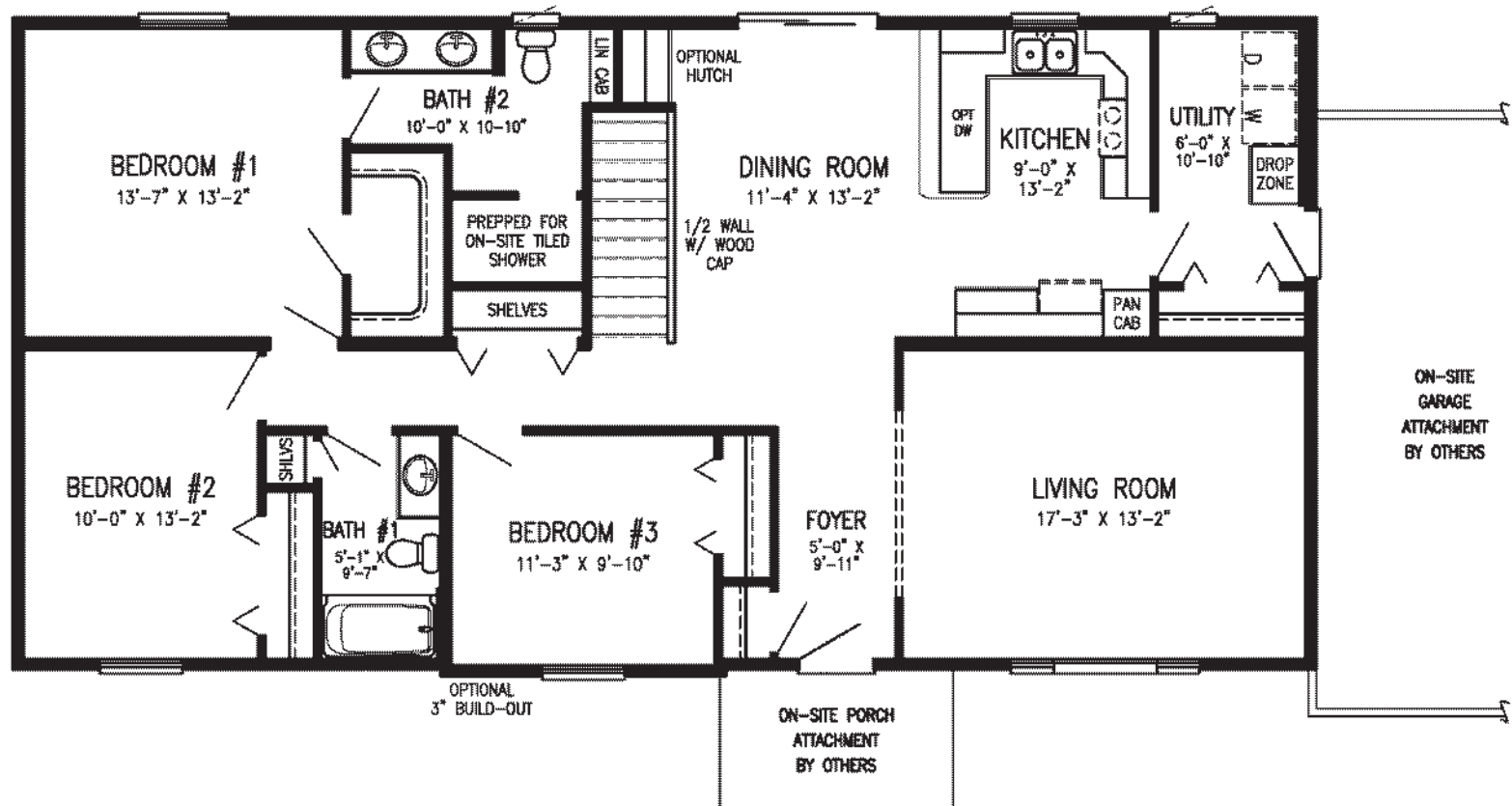
1,568 Sq. Ft.

Bedrooms: 3
Bathrooms: 1 3/4



HOME SIZE

Depth: 28'
Length: 56'



Charleston II



HOME SIZE

Depth: 28'
Length: 56'

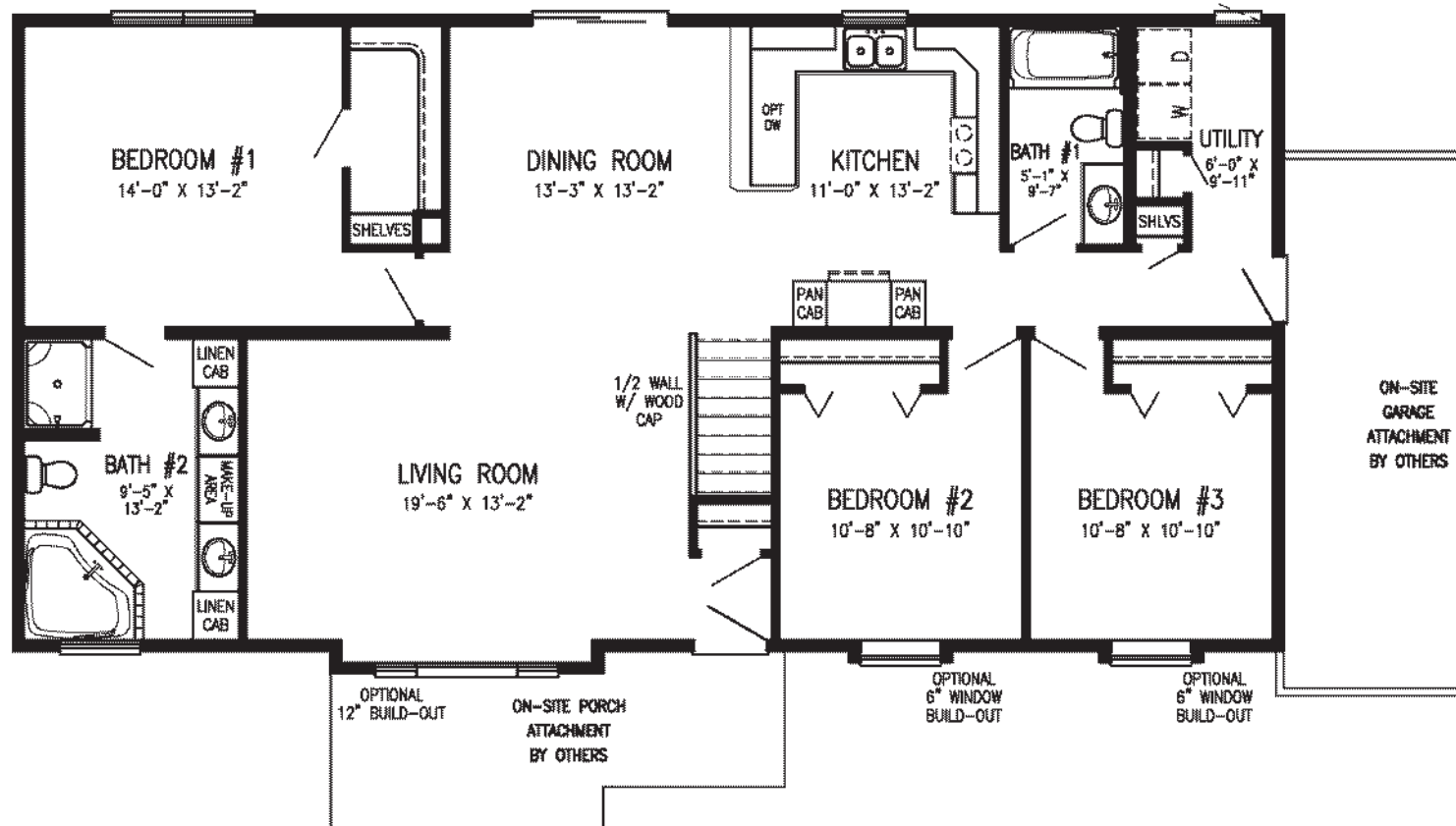
Artist rendering may contain optional features.

This plan features.....

- ❖ Master Suite
- ❖ Main Level Laundry
- ❖ Walk-In Closet
- ❖ Split Bedrooms Layout

1,568 Sq. Ft.

Bedrooms: 3
Bathrooms: 2



St. Clair

This plan features.....

- ❖ Master Suite
- ❖ Main Level Laundry
- ❖ Flex Room
- ❖ Split Bedrooms Layout

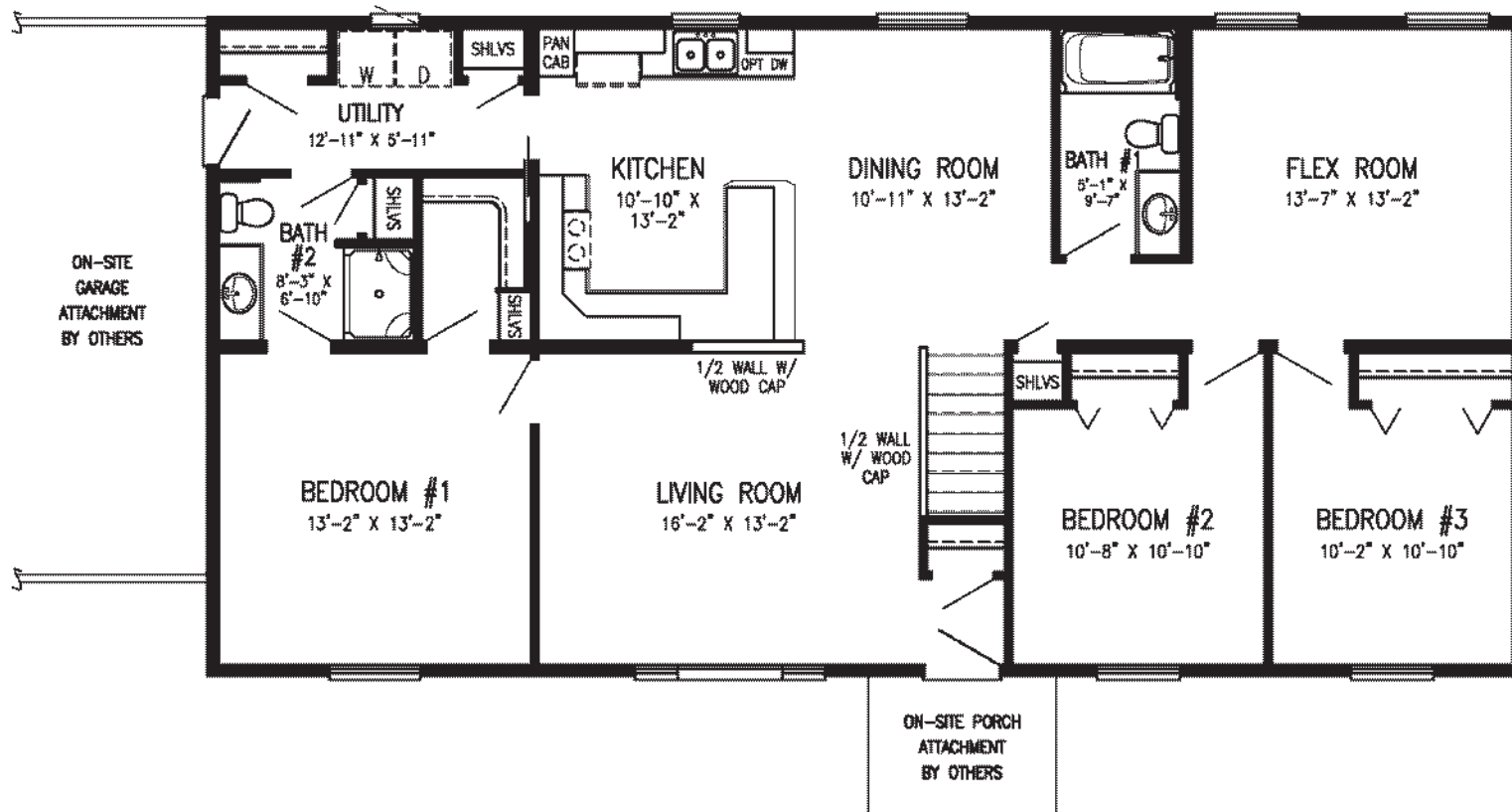
1,568 Sq. Ft.

Bedrooms: 3
Bathrooms: 1 3/4



HOME SIZE

Depth: 28'
Length: 56'



Sullivan



HOME SIZE

Depth: 28'
Length: 56'

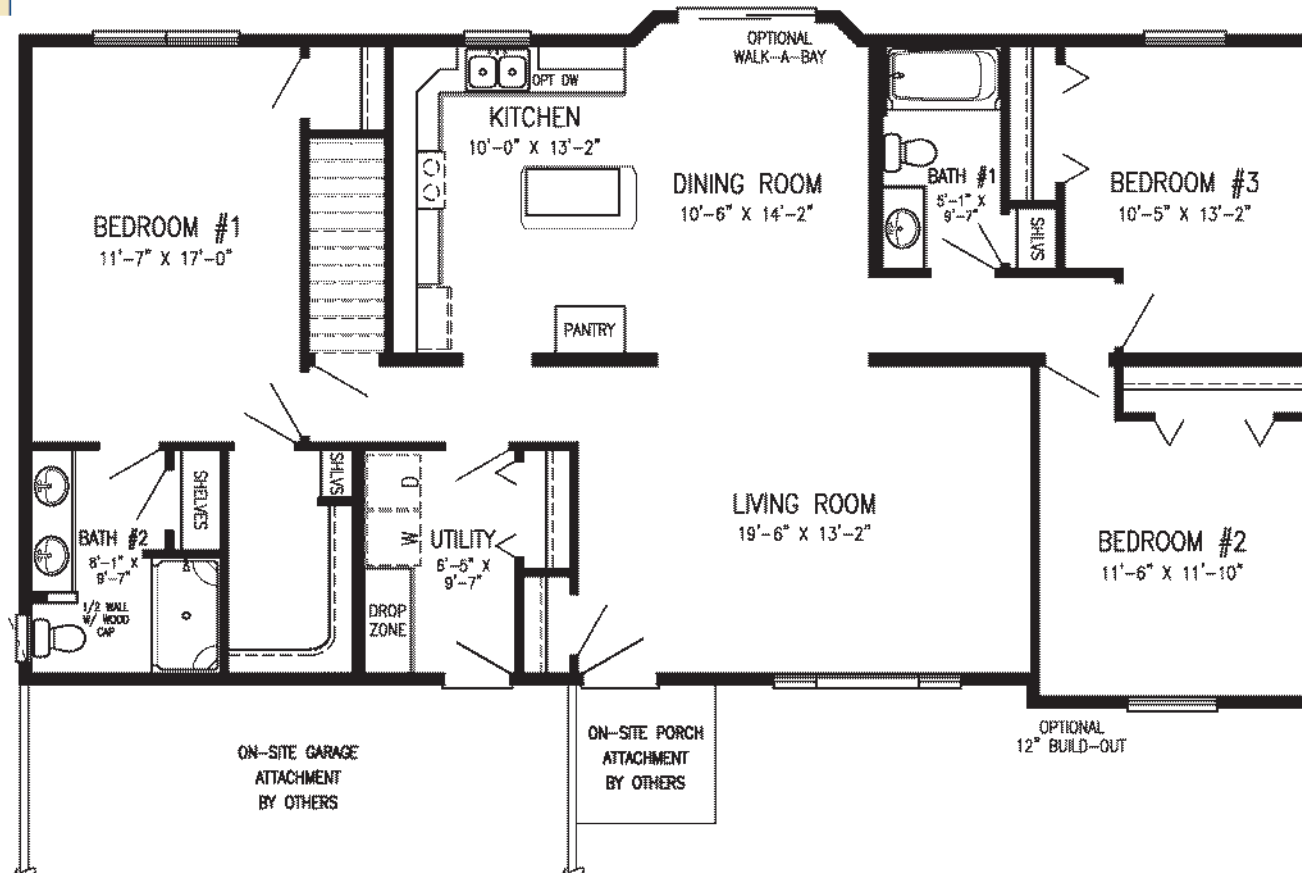
Artist rendering may contain optional features.

This plan features.....

- ❖ Master Suite
- ❖ L-Shape Kitchen w/Island
- ❖ Main Level Laundry
- ❖ Split Bedrooms Layout

1,568 Sq. Ft.

Bedrooms: 3
Bathrooms: 1 3/4



Hawthorne

This plan features.....

- ❖ Master Suite
- ❖ L-Shape Kitchen w/Island
- ❖ 2 Walk-In Closets
- ❖ Split Bedrooms Layout

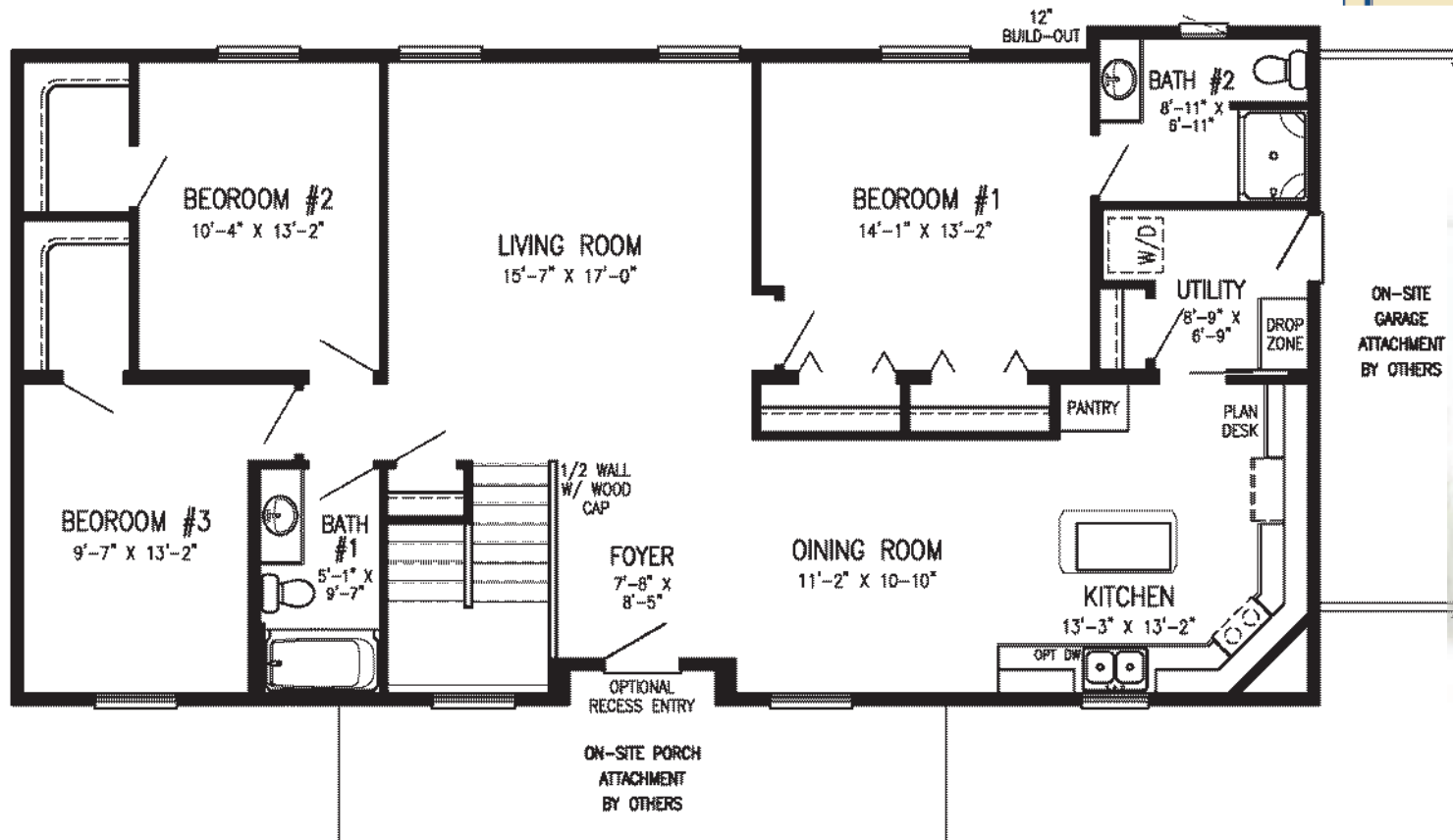
1,578 Sq. Ft.

Bedrooms: 3

Bathrooms: 1 3/4



HOME SIZE
Depth: 28'/29'
Length: 56'



Trenton



HOME SIZE

Depth: 28'/29'
Length: 54'/58'

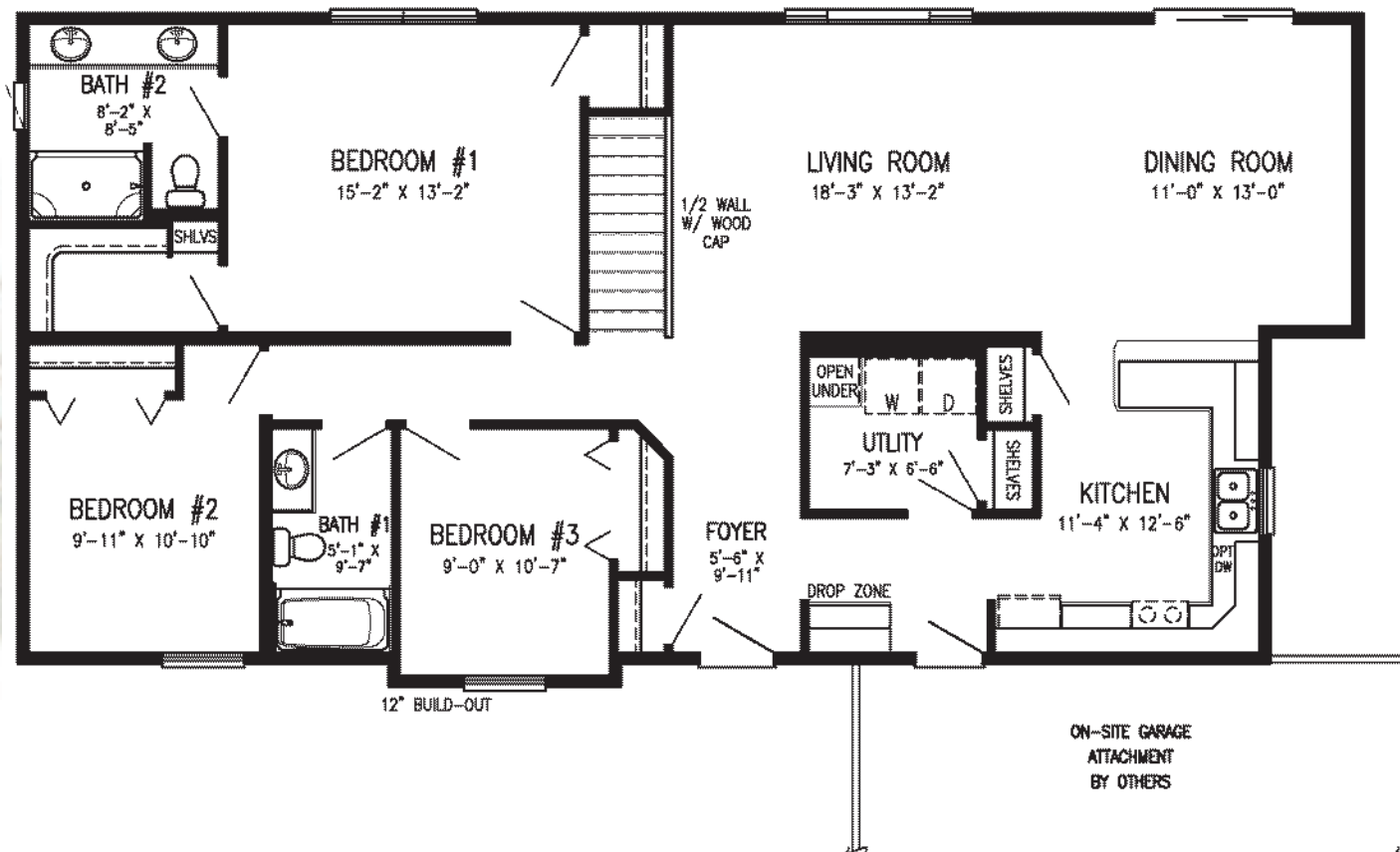
Artist rendering may contain optional features.

This plan features.....

- ❖ Master Suite
- ❖ Main Level Laundry
- ❖ L-Shape Kitchen w/Snack Bar
- ❖ Walk-In Closet

1,578 Sq. Ft.

Bedrooms: 3
Bathrooms: 1 3/4



Rosedale

This plan features.....

- ❖ Design Ideal for Narrow Lot
- ❖ Master Suite
- ❖ Main Level Laundry
- ❖ Split Bedrooms Layout

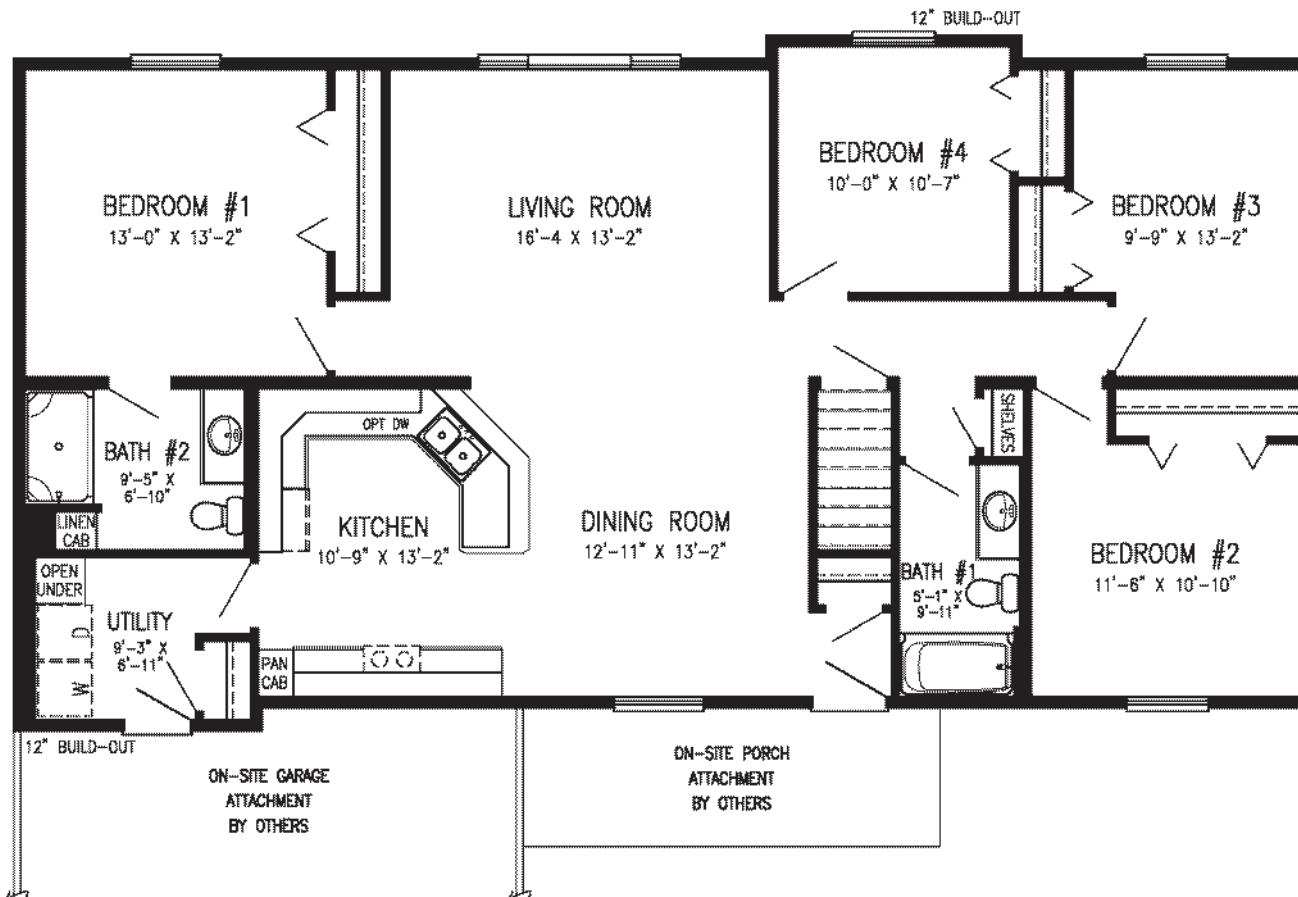
1,590 Sq. Ft.

Bedrooms: 4
Bathrooms: 1 3/4



Artist rendering may contain optional features.

HOME SIZE
Depth: 28' / 30'
Length: 56'



Kendall Park



Artist rendering may contain optional features.

HOME SIZE

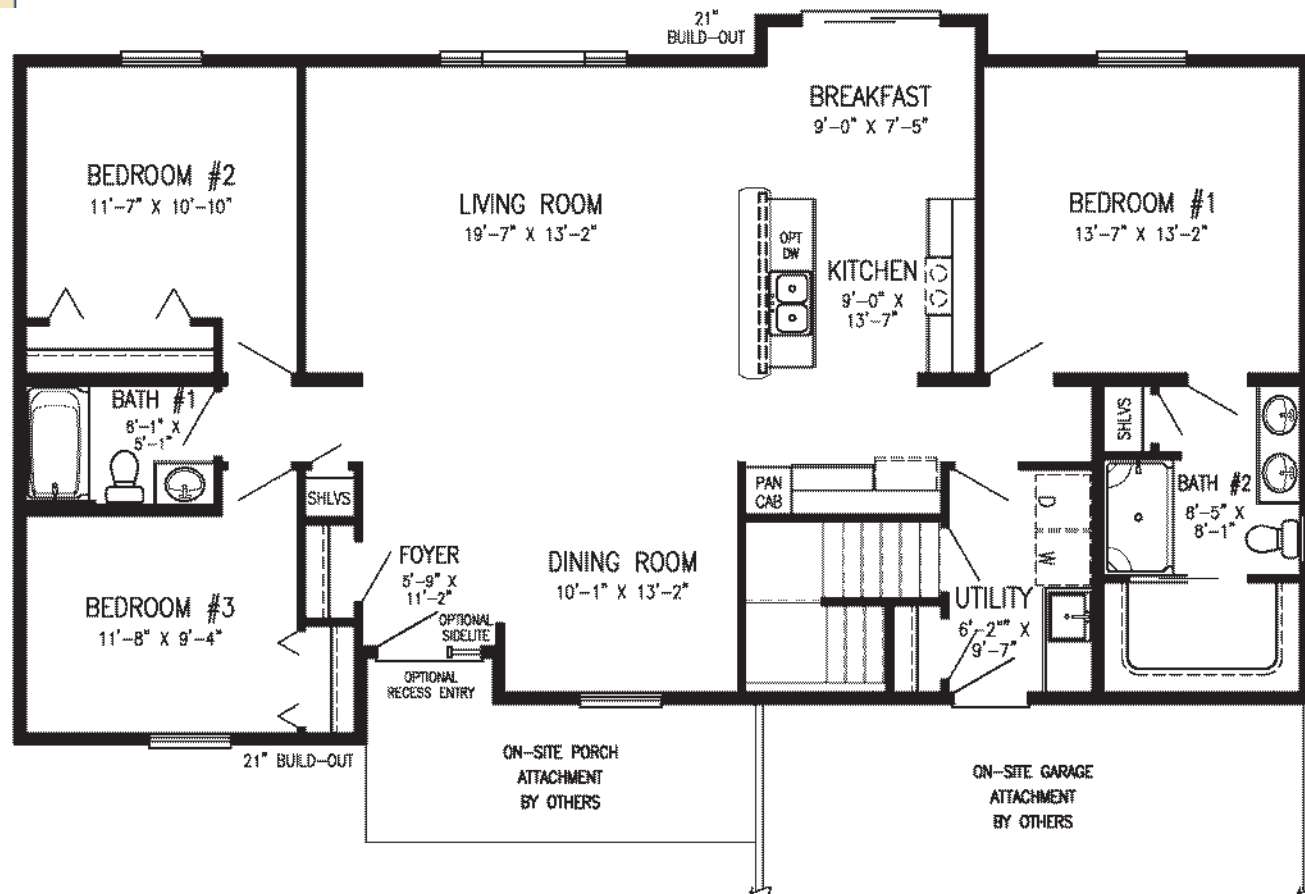
Depth: 28'31'6"
Length: 56'

This plan features.....

- ❖ Design Ideal for Narrow Lot
- ❖ Master Suite
- ❖ Breakfast Nook
- ❖ Split Bedrooms Layout

1,612 Sq. Ft.

Bedrooms: 3
Bathrooms: 1 3/4



Ranch

Wyoming II

This plan features.....

- ❖ Master Suite
- ❖ Formal Dining Room
- ❖ L-Shape Kitchen w/Island
- ❖ Split Bedrooms Layout

1,615 Sq. Ft.

Bedrooms: 3

Bathrooms: 2

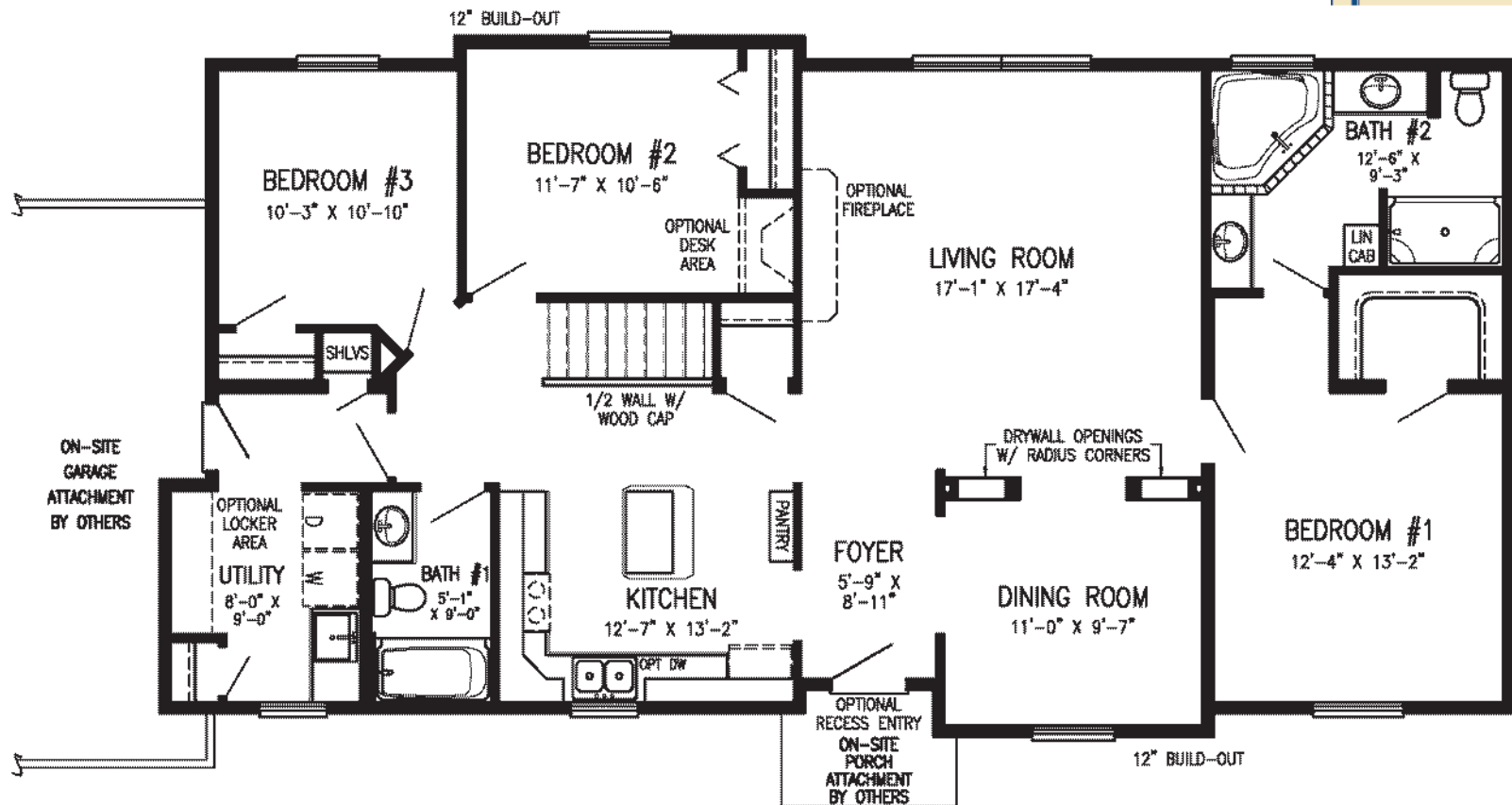


Artist rendering may contain optional features.

HOME SIZE

Depth: 28'/30'

Length: 56'/58'



Custom-Designed, Precision-Made, Climate-Controlled, Energy-Efficient Modular Construction

Modular construction is, quite simply, twenty-first century craftsmanship. In the late nineteenth-century, structures were stick-built on site to take advantage of the natural resources at hand. While we at Stratford Homes still believe in the advantages of high-quality stick-built craftsmanship, we know there's no longer an advantage to building a structure on site.

Customized, Controlled Craftsmanship.

Today, quality is equated with materials, technology and precision. Almost every item on the market is constructed within a manufacturing facility because the process is cost-effective, standardized, and quick. Shouldn't we demand the same of our residential construction processes?

Stratford Homes' precise, highly engineered, finely crafted, modular construction process offers several advantages.

Climate-Controlled Construction.

Stratford Homes' manufacturing facility offers optimum environmental conditions. Supplies are not exposed to on-site forces of nature, thus reducing warpage and damage to the materials that compose your custom building. On-site problems such as sub-contractor no-shows, pilferage and material shortages are virtually eliminated.

Exceptional Custom Engineering and Construction.

Our engineers custom design each new home using the latest CAD technology. Our craftspeople use precise machinery and quality standardized methods to produce buildings with superior structural integrity.

Quality Control.

Our production setting allows for consistent quality and uniform processes. Each of our designs is communicated directly to machinery ensuring precision, accuracy and a superior product.

Superior Compliance.

During the construction process and before the homes leave our facility they are inspected by an independent third-party agency in accordance with the local and state building requirements relevant to your building site.

Time Compression.

Our construction process occurs throughout the year and is not subject to weather delays. Site preparation by your chosen builder/general contractor can also be concurrently scheduled with Stratford Homes' modular construction. With the foundation in place, modules can be placed nearly any time of year.

Better Value.

Our homes are cost-effective because of our efficient manufacturing process, a construction process that is not subject to seasonality and weather. Furthermore, volume purchasing of materials and decreased delivery costs associated with bringing supplies and talent to an on-site project assist in reducing unnecessary costs.

We also offer premium brand name components and fixtures with a wide range of options, allowing you to appoint your new home with the windows, doors, cabinets and fixtures that fit your budget.

Reputable Builders.

Stratford Homes has an established network of experienced independent builders who have passed a rigorous background check, qualification process and training regimen. These reputable, capable builders will provide guidance throughout the construction process, and coordinate the construction of the basement and on-site requirements. Their expertise in local building codes, construction conditions and subcontracting facilitates the process.

Energy Efficient Buildings.

Our modular structures have a tighter shell than site-built structures because of our precision construction process. Our craftspeople are better able to fill spaces around pipes, outlets, windows, doors and exterior sheathing. The end result is less air infiltration and lower heating and cooling costs.

Eco-Friendly Construction.

Modular construction is more eco-friendly than conventional on-site construction. Because less time is spent on-site, damage to the site and its' surroundings is greatly reduced. This includes less noise pollution, on-site waste, and vehicular traffic that increases greenhouse gas emissions.

Because Stratford Homes' modular construction takes place within a controlled facility, material waste is minimized – we inventory materials left over from one project for later use. Stratford Homes also has excellent waste management and recycling programs in place and we continually aim for optimal efficiency to improve the use of energy within our controlled manufacturing environment.

Eastport

Ranch



Artist rendering may contain optional features.

This plan features.....

- ❖ Master Suite
- ❖ Open Concept
- ❖ L-Shape Kitchen w/Island
- ❖ 2 Walk-In Closets

1,678 Sq. Ft.

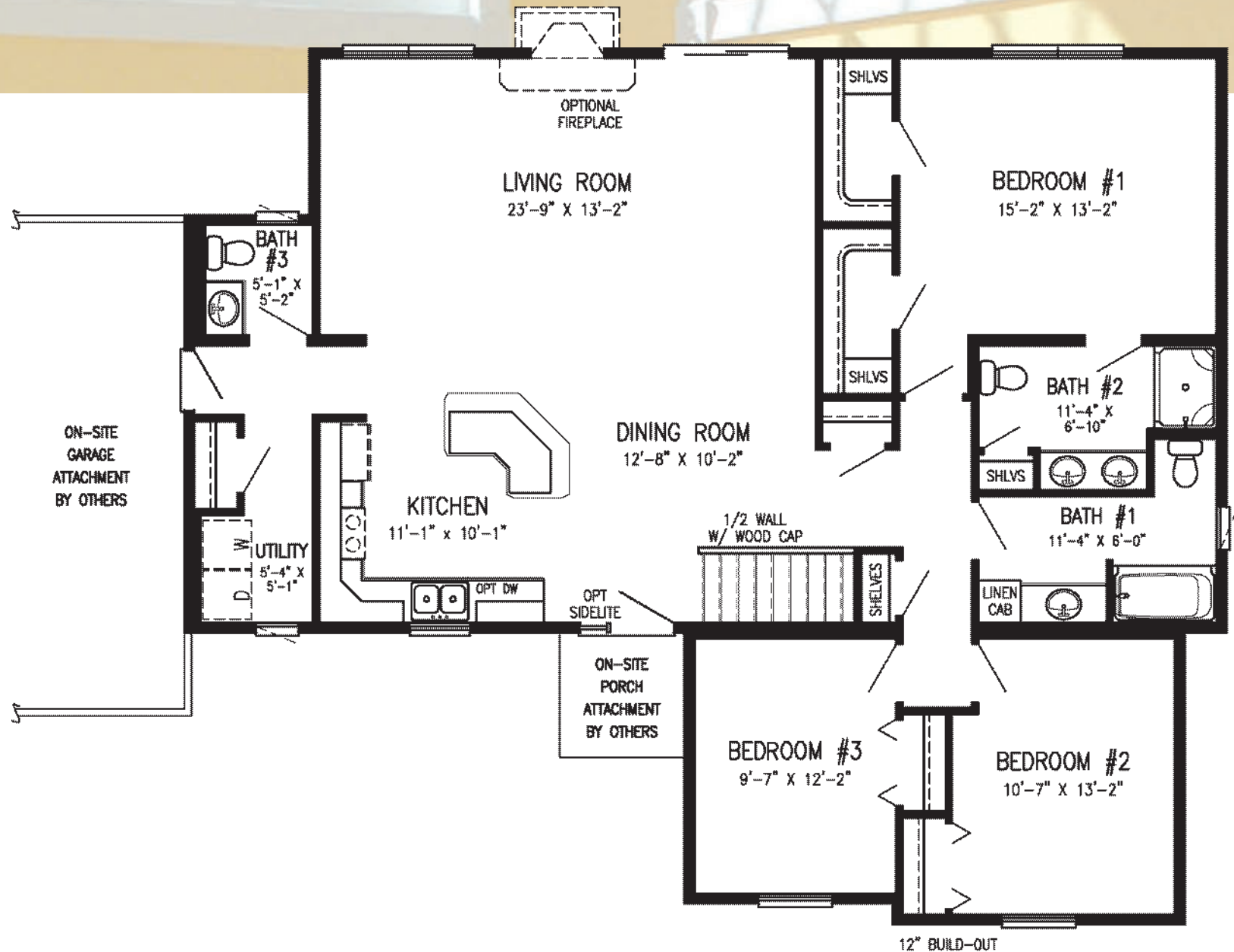
Bedrooms: 3
Bathrooms: 2 1/2

HOME SIZE

Depth: 28'/42'

Length: 44'/50'

Eastport



Concord

Ranch



Artist rendering may contain optional features.

This plan features.....

- ❖ Master Suite
- ❖ Open Concept
- ❖ Main Level Laundry
- ❖ Large Kitchen Island

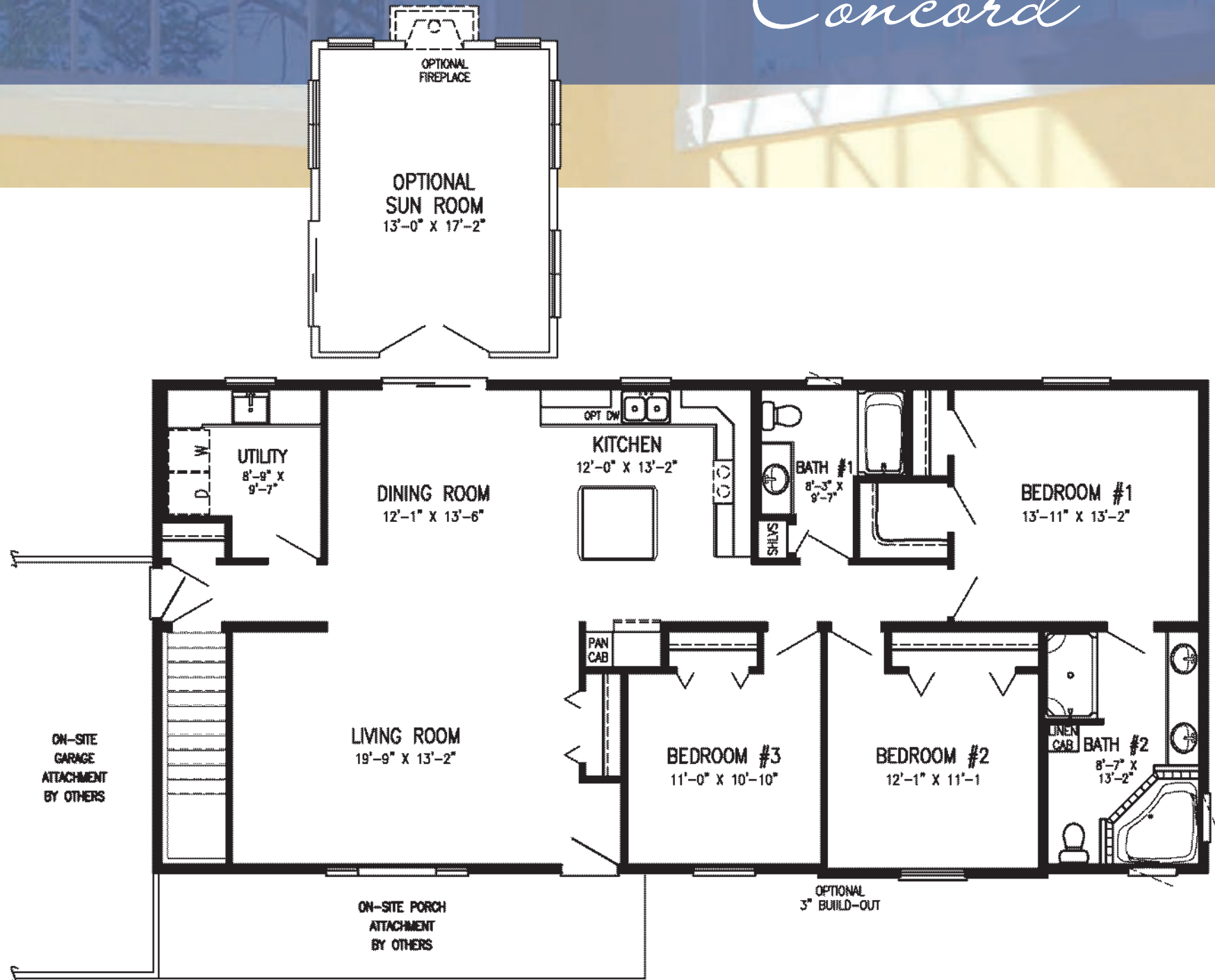
1,680 Sq. Ft.

Bedrooms: 3
Bathrooms: 2

HOME SIZE

Depth: 28'
Length: 60'

Concord



Washington

This plan features.....

- ❖ Master Suite
- ❖ Open Concept
- ❖ Main Level Laundry
- ❖ Split Bedrooms Layout

1,680 Sq. Ft.

Bedrooms: 3

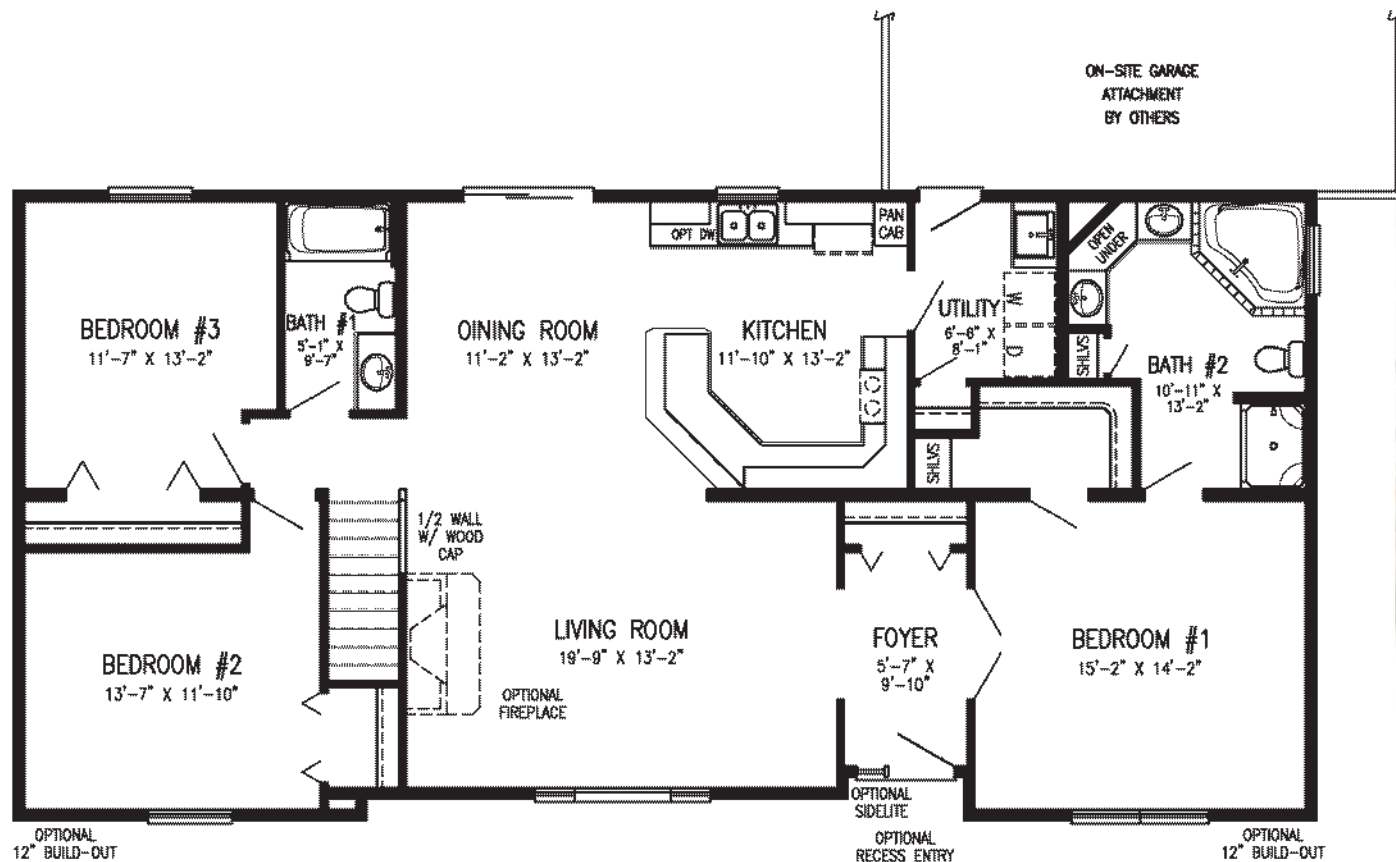
Bathrooms: 2



HOME SIZE

Depth: 28'

Length: 60'



Delmont



HOME SIZE

Depth: 31'6"

Length: 54'

Artist rendering may contain optional features.

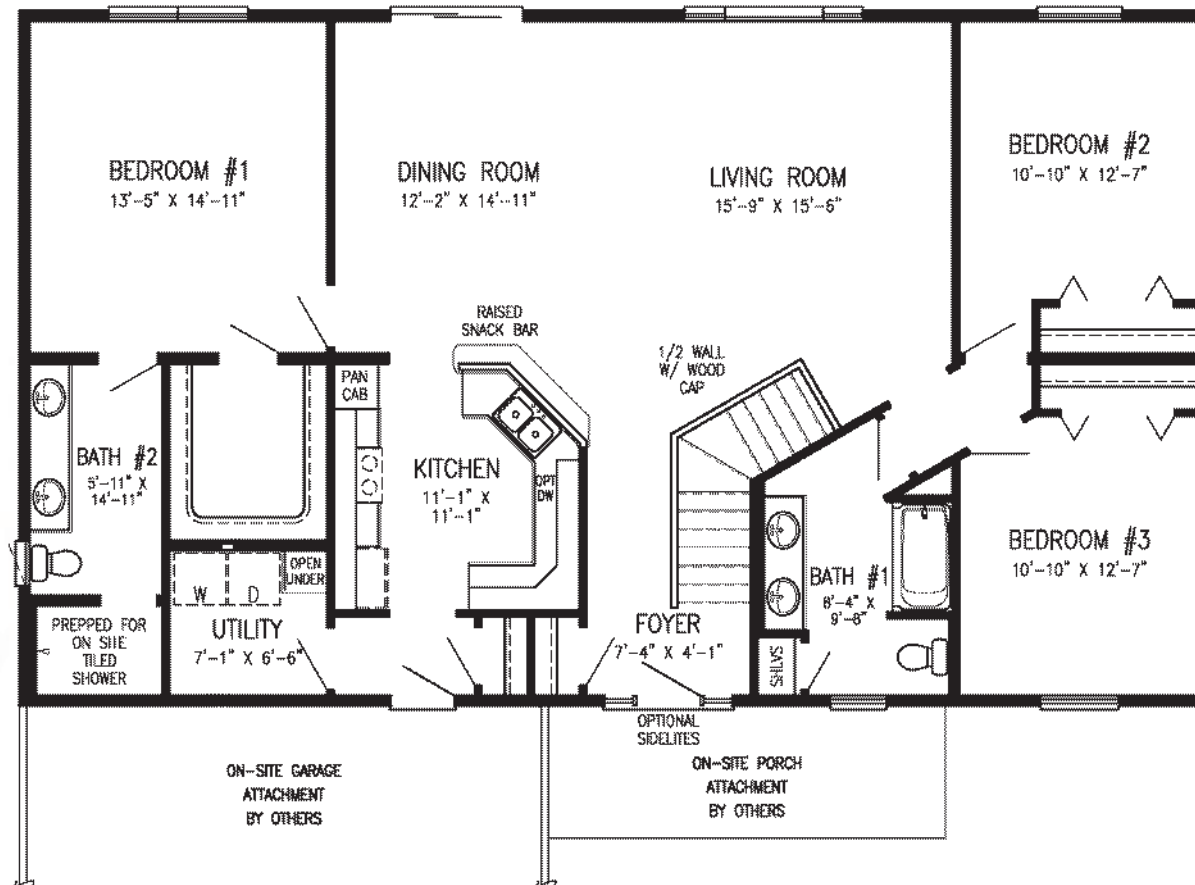
This plan features.....

- ❖ Master Suite
- ❖ Open Concept
- ❖ Main Level Laundry
- ❖ Walk-In Closet

1,701 Sq. Ft.

Bedrooms: 3

Bathrooms: 1 3/4



Avalon



Artist rendering may contain optional features.

This plan features.....

- ❖ Master Suite
- ❖ Main Level Laundry
- ❖ Walk-In Closet
- ❖ Kitchen Snack Bar

1,736 Sq. Ft.

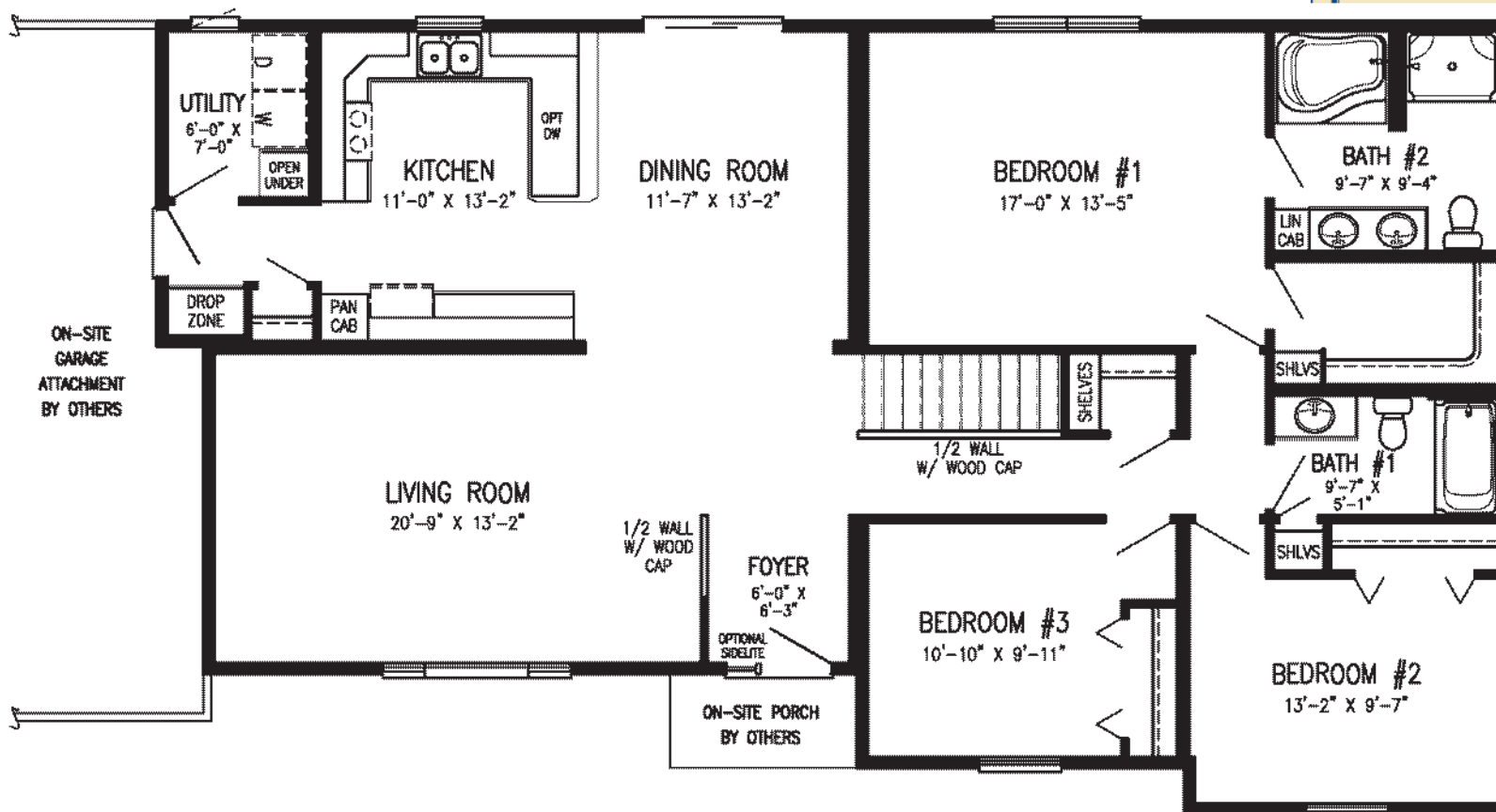
Bedrooms: 3

Bathrooms: 2

HOME SIZE

Depth: 28'/34'

Length: 56'/58'



Sheldon



HOME SIZE

Depth: 28' / 29'

Length: 62'

Artist rendering may contain optional features.

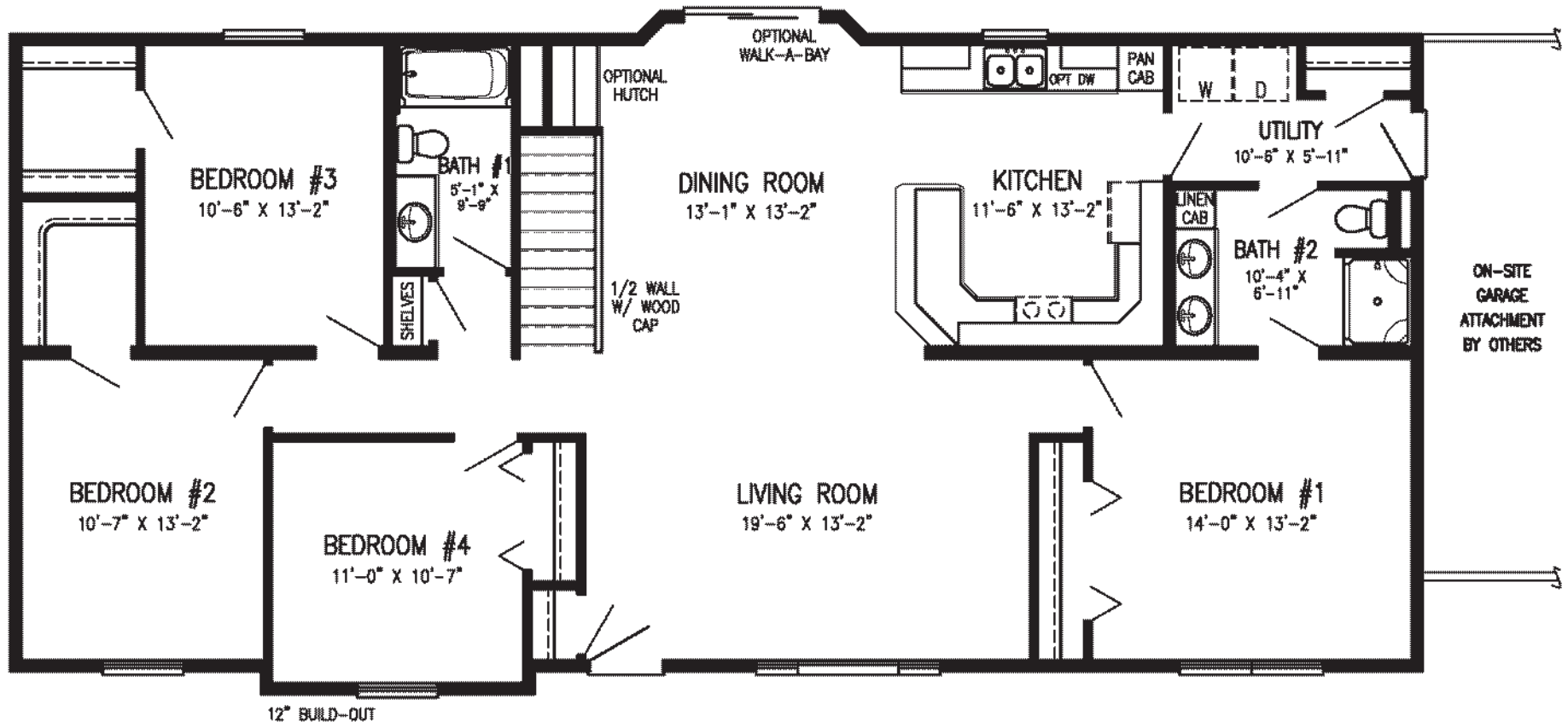
This plan features.....

- ❖ Master Suite
- ❖ Continental Master Bedroom
- ❖ 2 Walk-In Closets
- ❖ Split Bedrooms Layout

1,748 Sq. Ft.

Bedrooms: 4

Bathrooms: 1 3/4



Design Details



Lifestyle



Design Details

Lifestyle



Design Details

Lifestyle



Laurel Day

Ranch



Artist rendering may contain optional features.

This plan features.....

- ❖ Master Suite
- ❖ Main Level Laundry
- ❖ 2 Walk-In Closets
- ❖ Split Bedrooms Layout

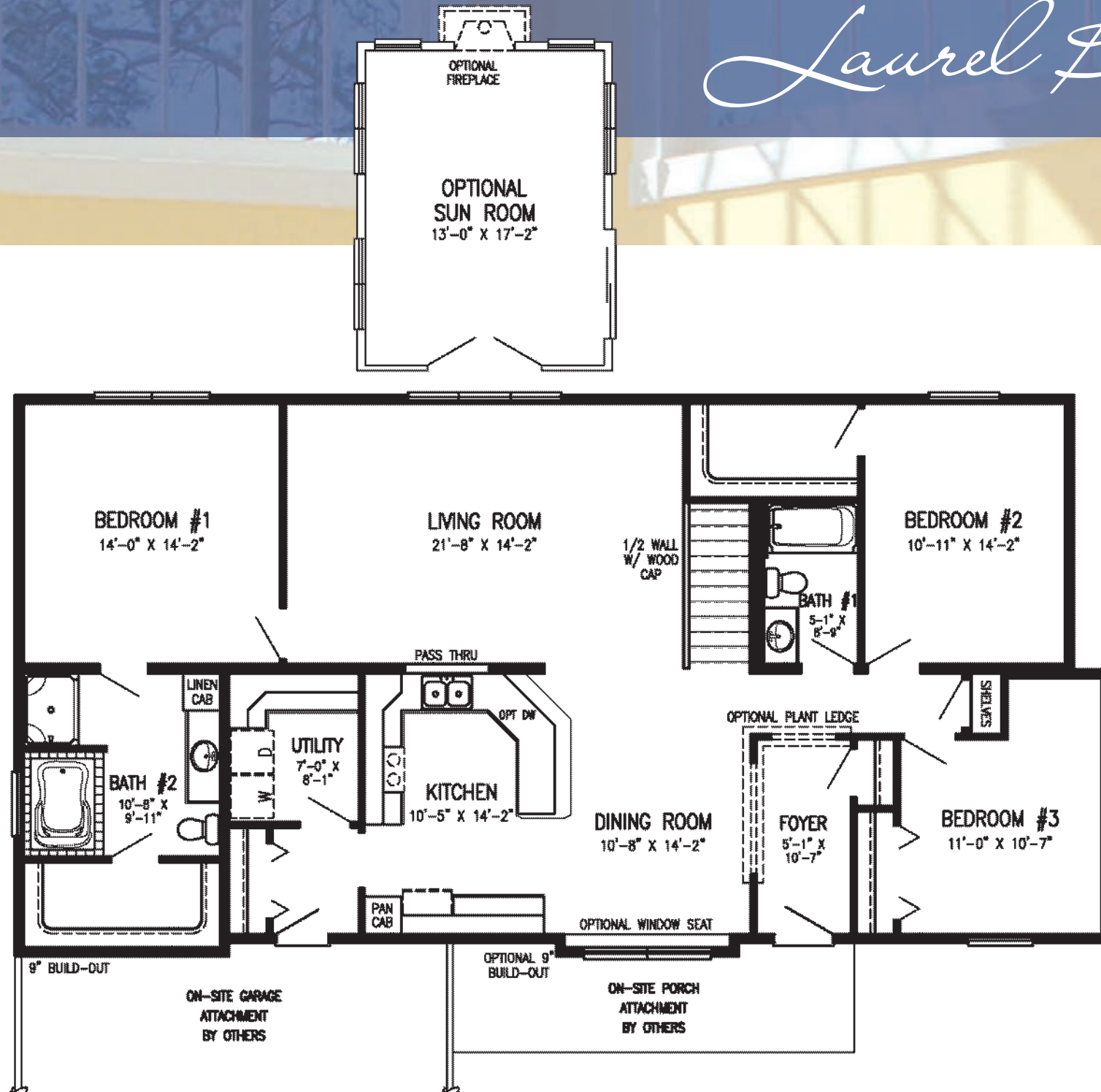
1,779 Sq. Ft.

Bedrooms: 3
Bathrooms: 2

HOME SIZE

Depth: 30'/30' 9"
Length: 58'/60'

Laurel Bay



Milbridge

Ranch



Artist rendering may contain optional features.

This plan features.....

- ❖ Master Suite
- ❖ Main Level Laundry
- ❖ 3 Walk-In Closets
- ❖ Split Bedrooms Layout

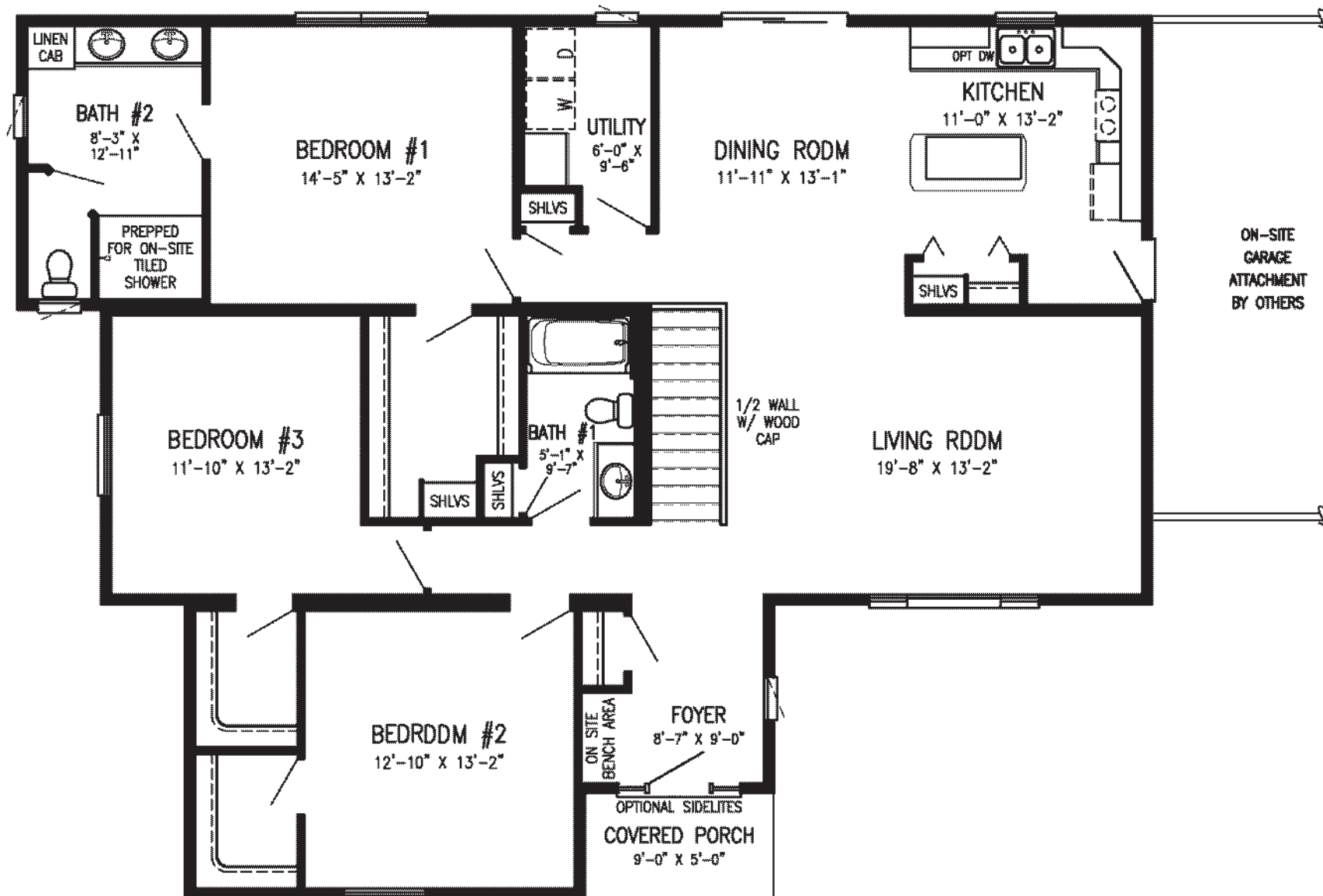
1,803 Sq. Ft.

Bedrooms: 3
Bathrooms: 1 3/4

HOME SIZE

Depth: 28'/42'
Length: 28'/50'/54'

Milbridge



Ranch

Marshall



Artist rendering may contain optional features.

This plan features.....

- ❖ Master Suite
- ❖ Open Concept
- ❖ Flex Room
- ❖ Split Bedrooms Layout

1,890 Sq. Ft.

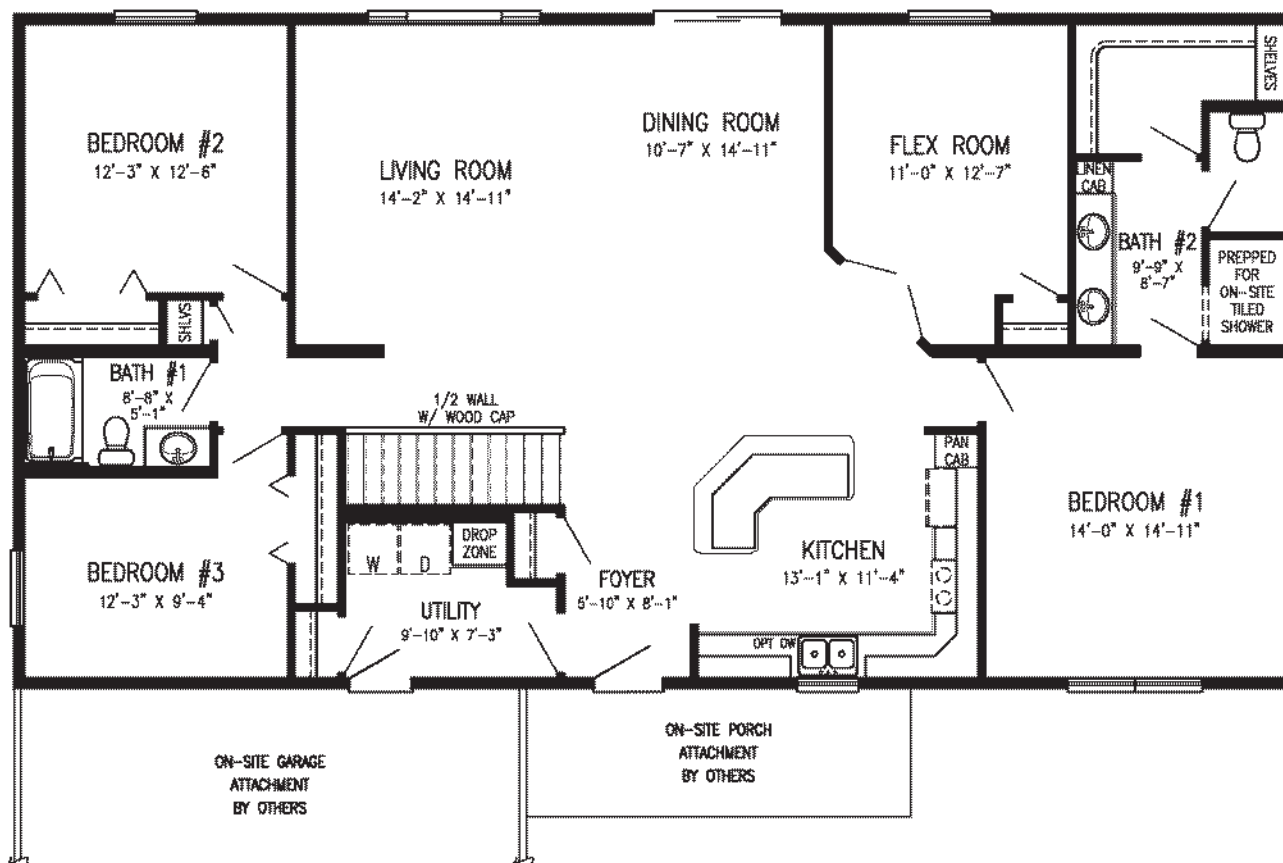
Bedrooms: 3

Bathrooms: 1 3/4

HOME SIZE

Depth: 31'6"

Length: 60'



Colorado



HOME SIZE

Depth: 30'/40'
Length: 58'/60'

Artist rendering may contain optional features.

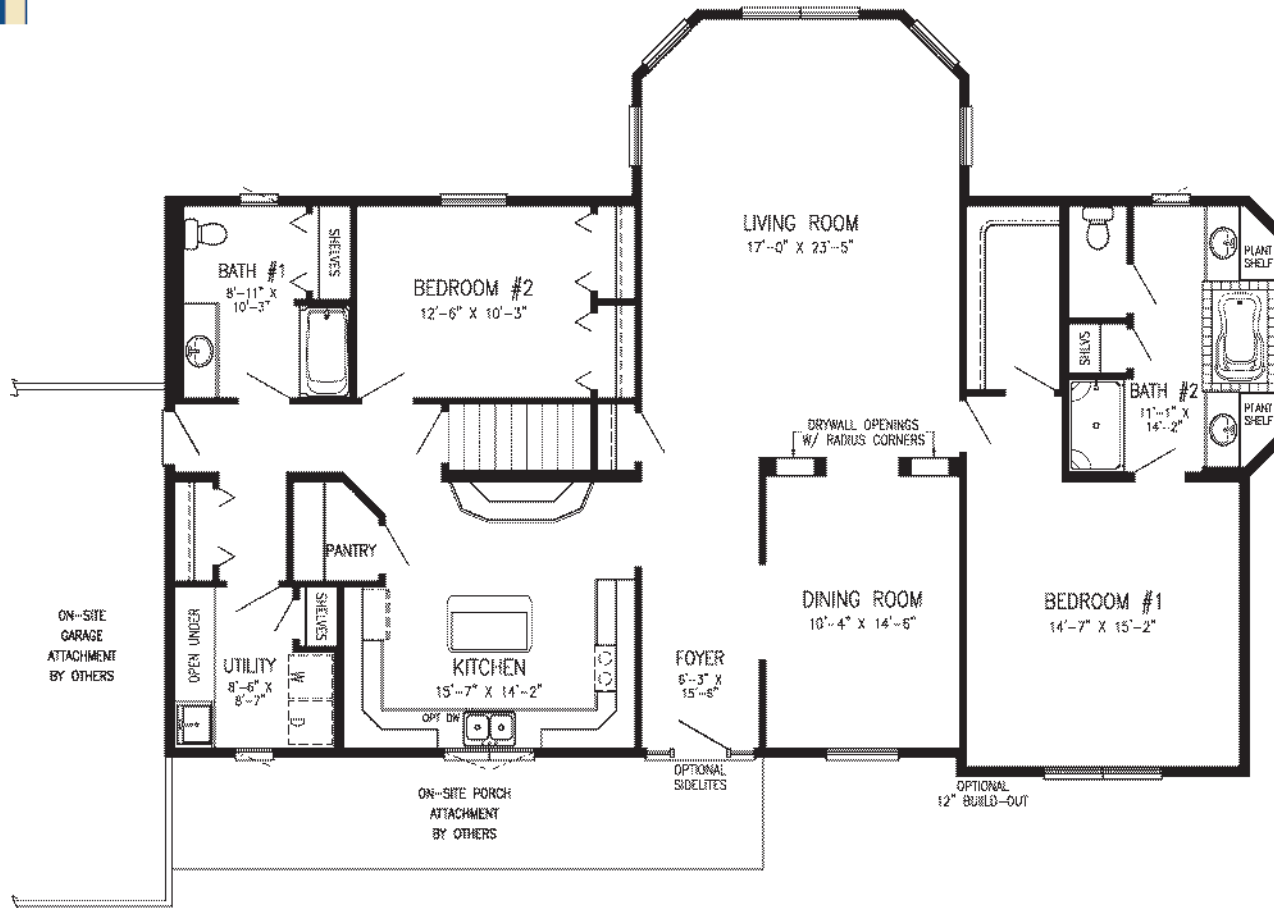
This plan features.....

- ❖ Master Suite
- ❖ Formal Dining Room
- ❖ Walk-In Pantry
- ❖ Main Level Laundry

1,934 Sq. Ft.

Bedrooms: 2

Bathrooms: 2



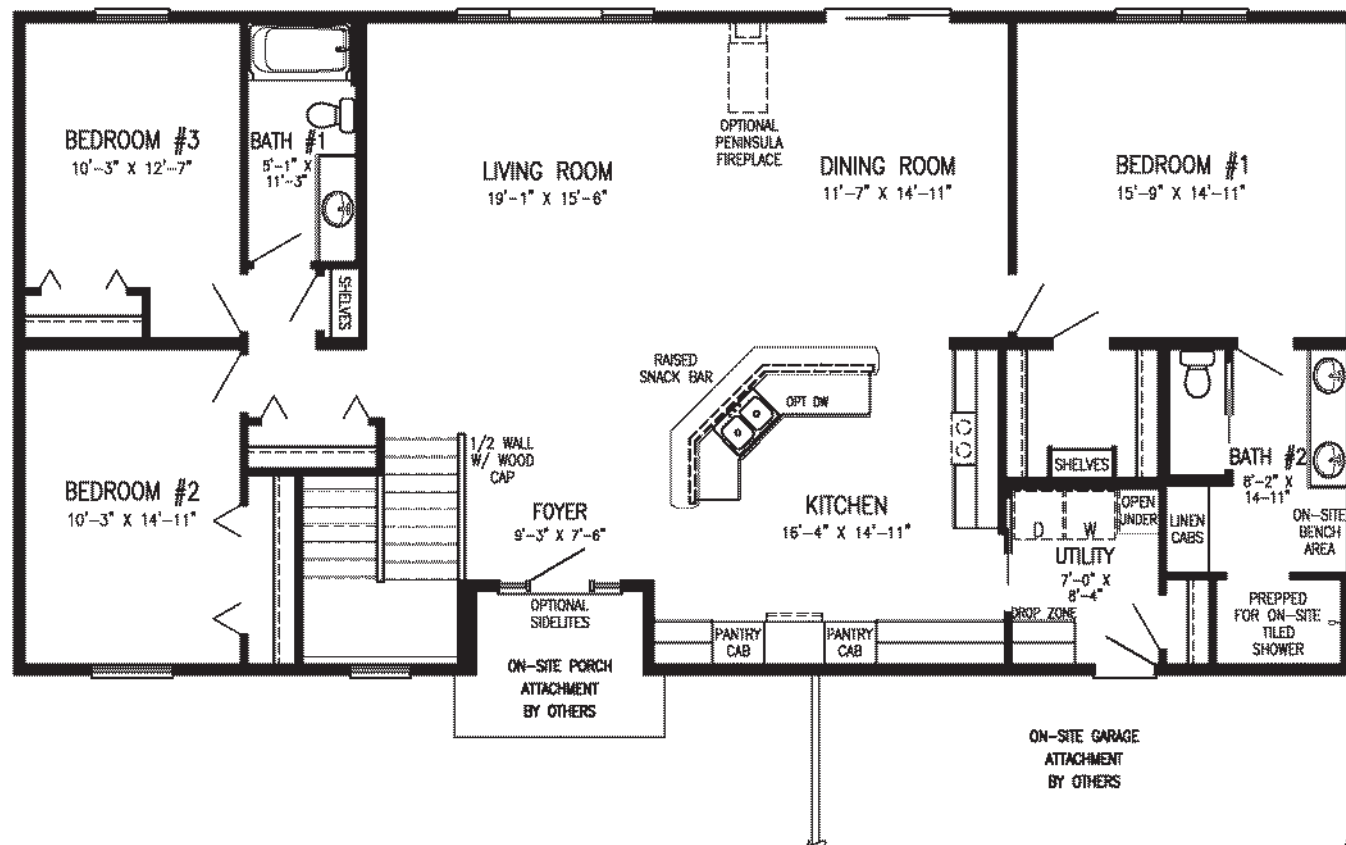
Hamilton

- ❖ Master Suite
- ❖ Open Concept
- ❖ Main Level Laundry
- ❖ Split Bedrooms Layout

Bedrooms: 3
Bathrooms: 1 3/4



HOME SIZE
Depth: 31'6"
Length: 64'



Vincent



HOME SIZE

Depth: 31'6"

Length: 64'

Artist rendering may contain optional features.

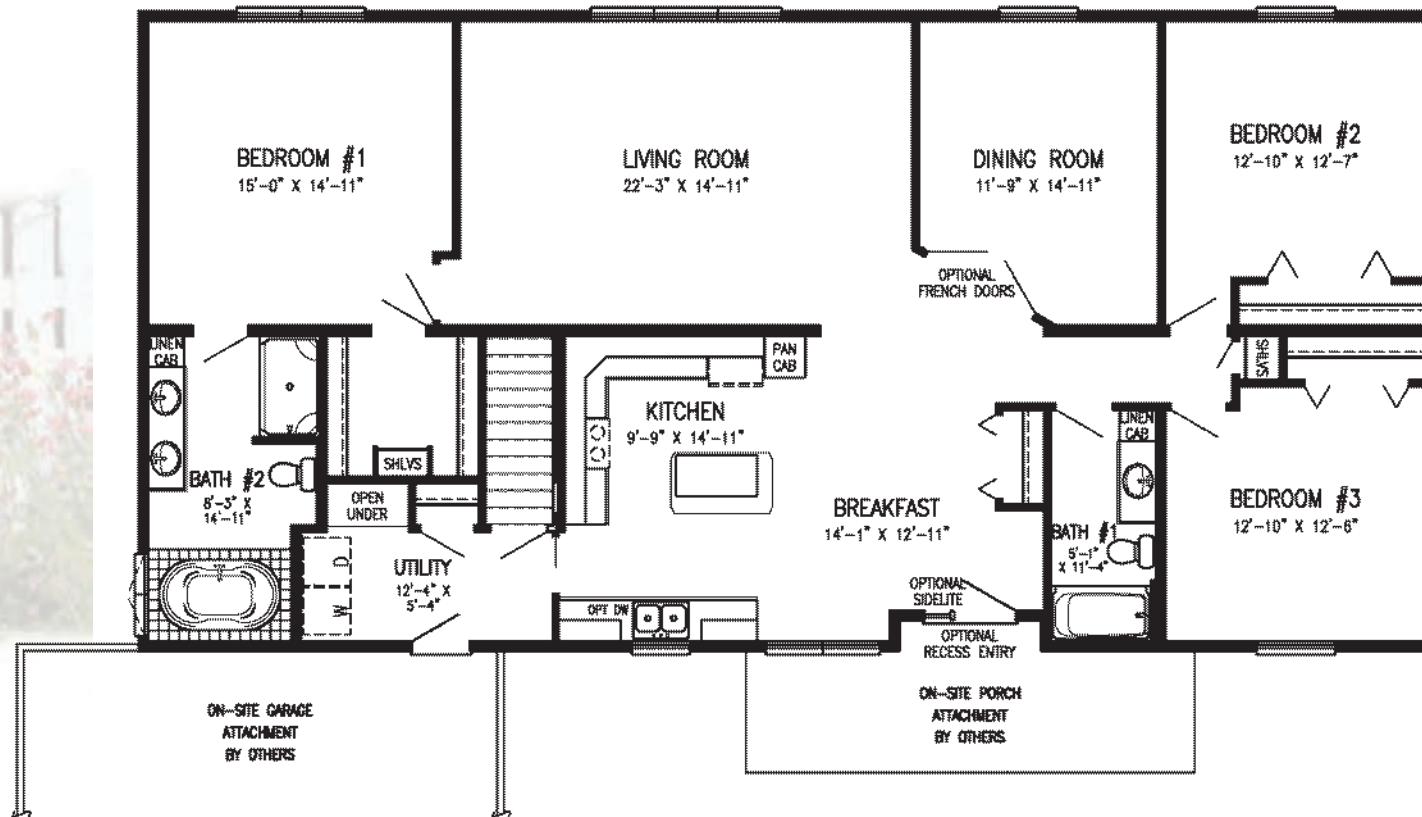
This plan features.....

- ❖ Master Suite
- ❖ Formal Dining Room
- ❖ Main Level Laundry
- ❖ Split Bedrooms Layout

2,016 Sq. Ft.

Bedrooms: 3

Bathrooms: 2



Sterling

This plan features.....

- ❖ Master Suite
- ❖ Formal Dining Room
- ❖ 2 Walk-In Closets
- ❖ Split Bedrooms Layout

2,024 Sq. Ft.

Bedrooms: 3

Bathrooms: 2

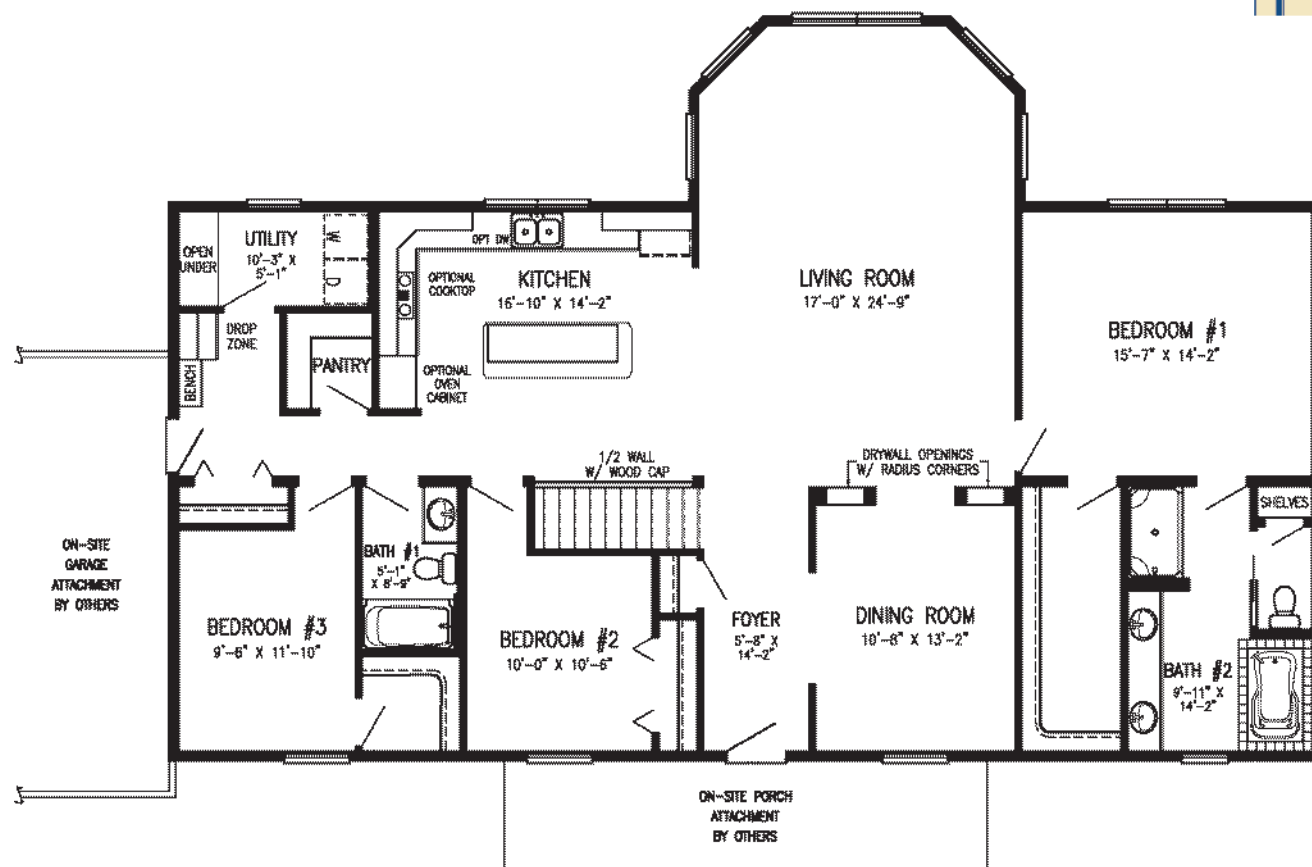


Artist rendering may contain optional features.

HOME SIZE

Depth: 30'/40'

Length: 62'



Lifestyle



Design Details

Lifestyle



McKinley

Ranch



Artist rendering may contain optional features.

This plan features.....

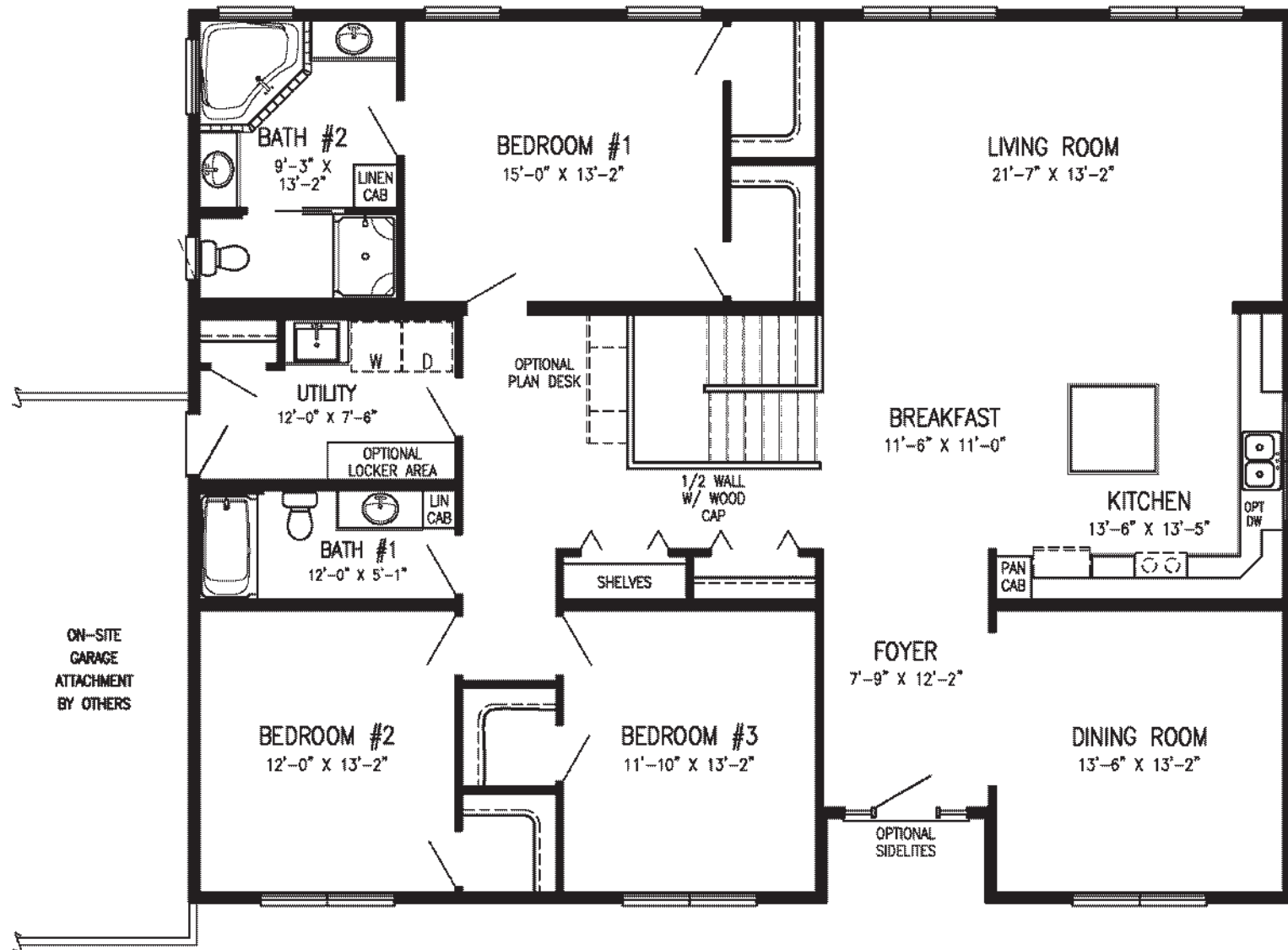
- ❖ Master Suite
- ❖ Formal Dining Room
- ❖ L-Shape Kitchen w/Island
- ❖ 4 Walk-In Closets

2,154 Sq. Ft.

Bedrooms: 3
Bathrooms: 2

HOME SIZE

Depth: 42'
Length: 52'



Summer Grove

Ranch



Artist rendering may contain optional features.

This plan features.....

- ❖ Master Suite
- ❖ Formal Dining Room
- ❖ Breakfast Nook
- ❖ Split Bedrooms Layout

2,217 Sq. Ft.

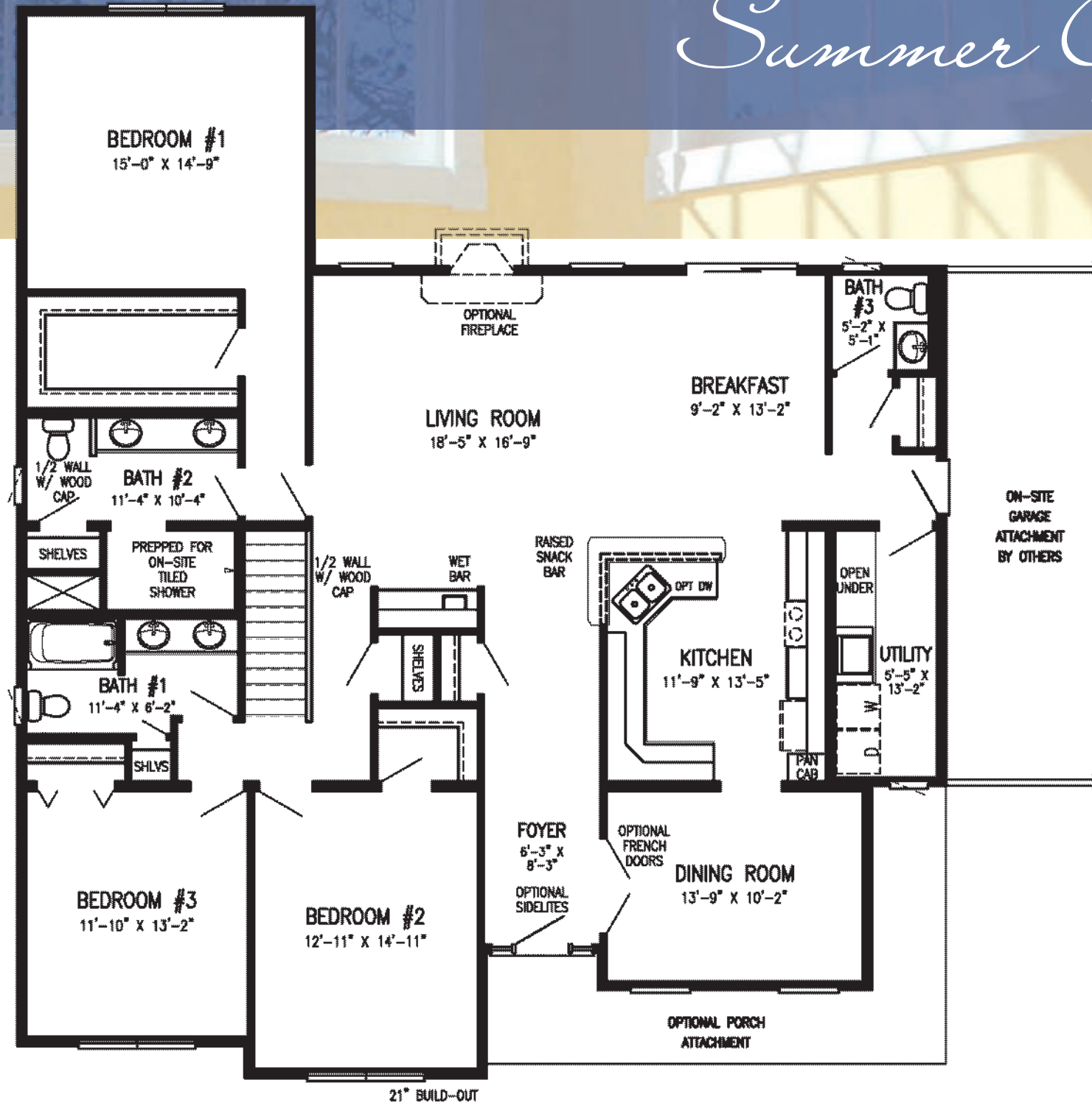
Bedrooms: 3
Bathrooms: 2 1/2

HOME SIZE

Depth: 57'9"

Length: 50'

Summer Grove



Grafton

Ranch



Artist rendering may contain optional features.

This plan features.....

- ❖ Master Suite
- ❖ Formal Dining Room
- ❖ Main Level Laundry
- ❖ 2 Walk-In Closets

2,222 Sq. Ft.

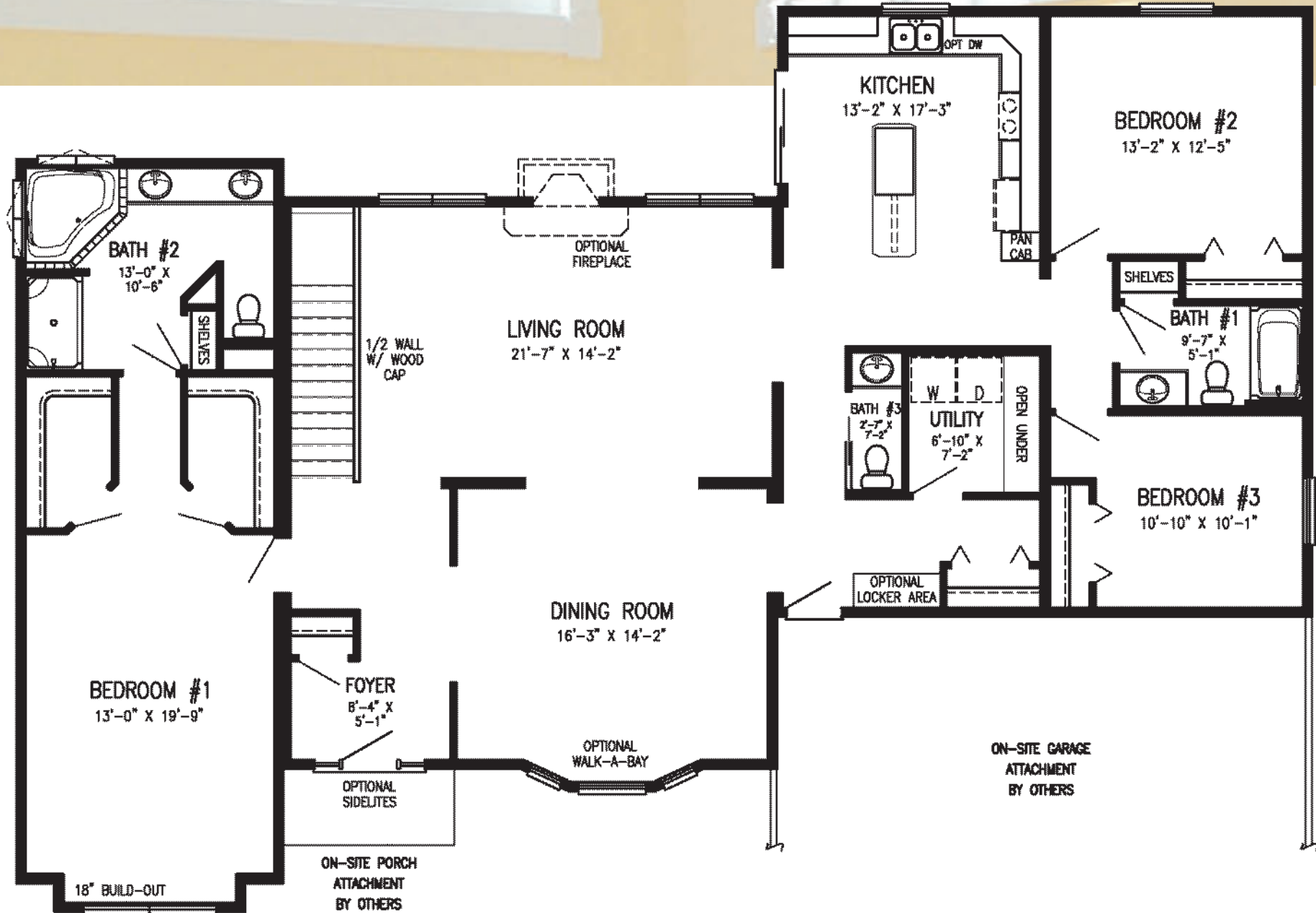
Bedrooms: 3
Bathrooms: 2 1/2

HOME SIZE

Depth: 47'6"

Length: 68'

Grafton



Edgewood

Ranch



Artist rendering may contain optional features.

This plan features.....

- ❖ Master Suite
- ❖ Walk-In Pantry
- ❖ U-Shape Kitchen w/Island
- ❖ Spacious Foyer

2,294 Sq. Ft.

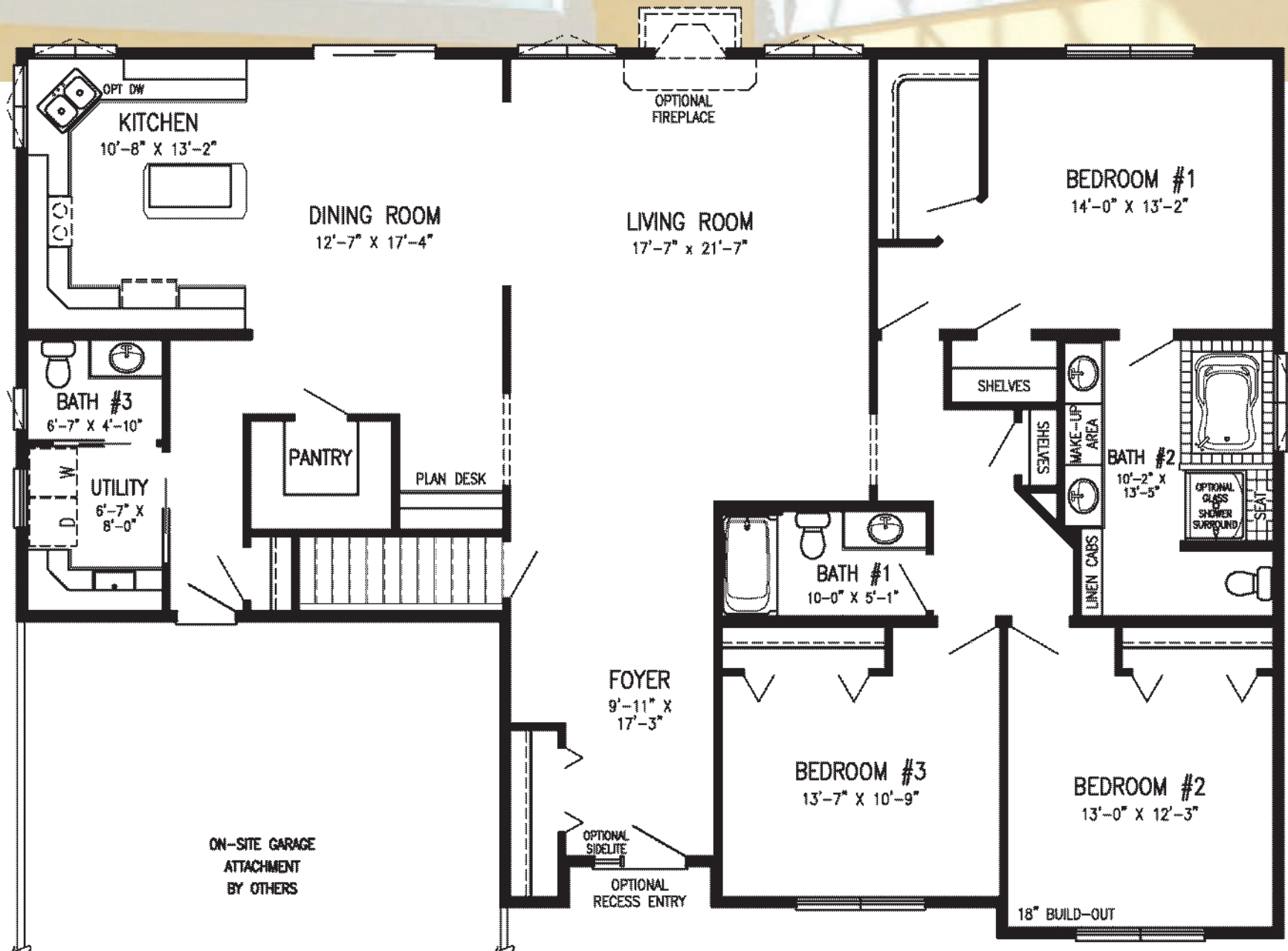
Bedrooms: 3
Bathrooms: 2 1/2

HOME SIZE

Depth: 43'6"

Length: 38'/62'

Edgewood



Ferndale

Ranch



Artist rendering may contain optional features.

This plan features.....

- ❖ Master Suite
- ❖ Formal Dining Room
- ❖ Main Level Laundry
- ❖ Jack & Jill Bathroom

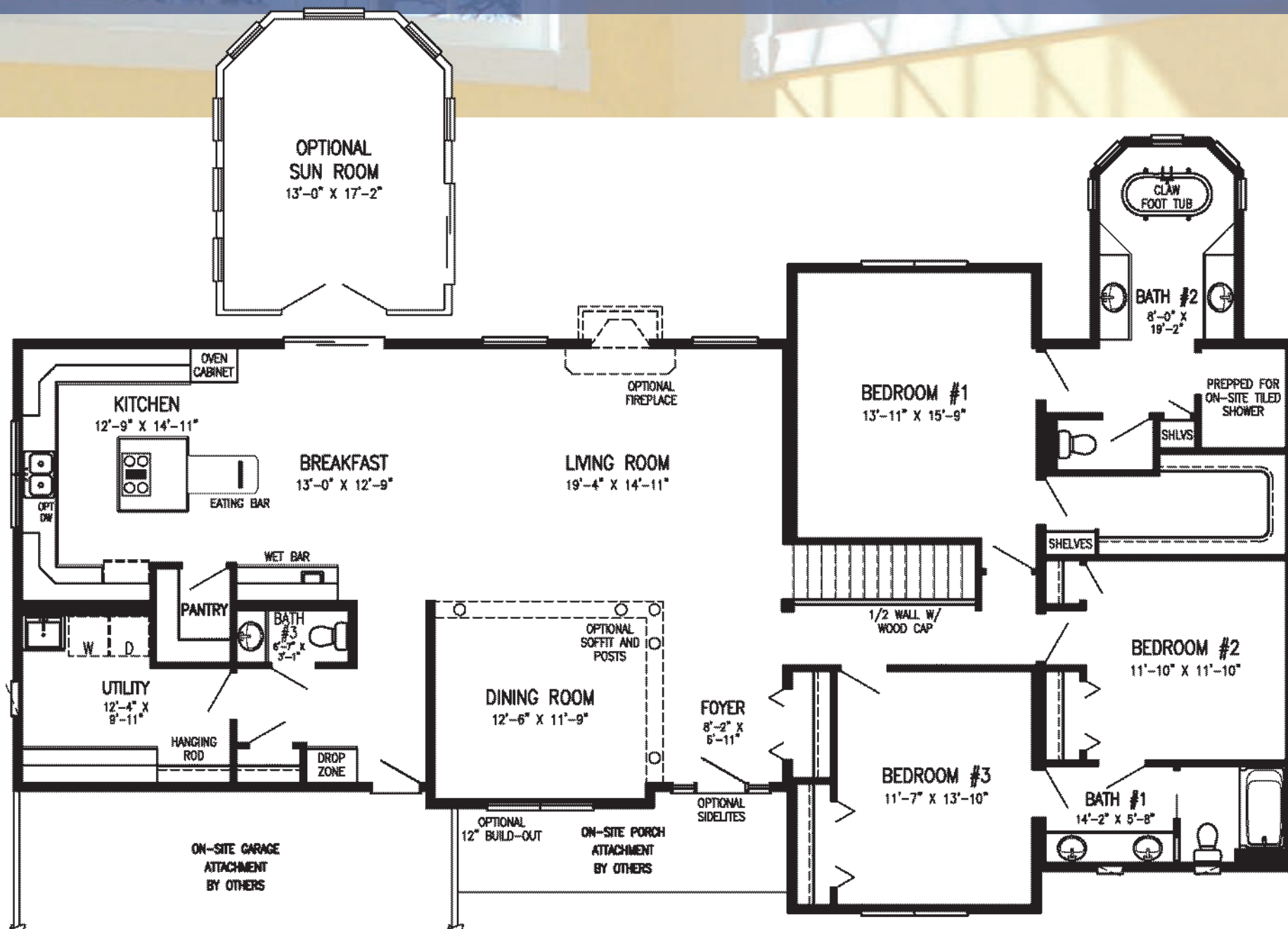
2,384 Sq. Ft.

Bedrooms: 3
Bathrooms: 2 1/2

HOME SIZE

Depth: 44'
Length: 76'

Ferndale



Sunnybrook



Artist rendering may contain optional features.

This plan features.....

- ❖ Master Suite
- ❖ Walk-In Closet
- ❖ Kitchen Snack Bar
- ❖ Linen Closets

1,144 Sq. Ft.

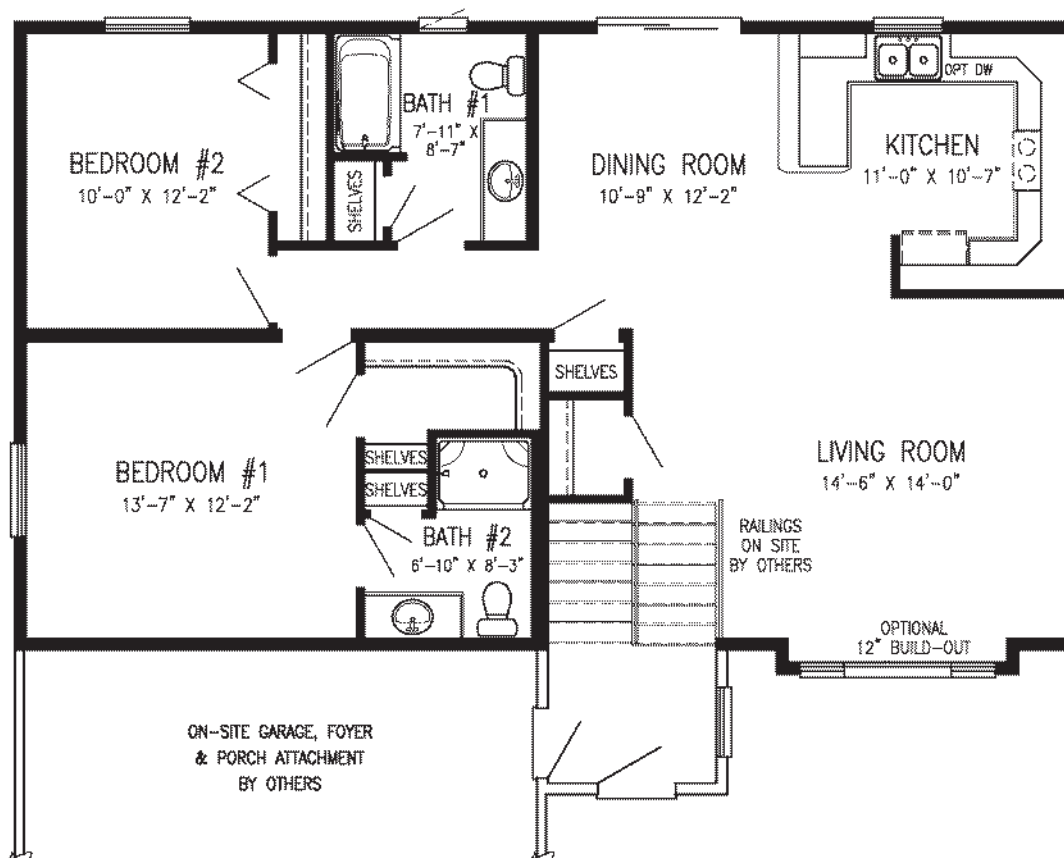
Bedrooms: 2

Bathrooms: 1 3/4

HOME SIZE

Depth: 26'

Length: 44'



Windsor



Artist rendering may contain optional features.

HOME SIZE

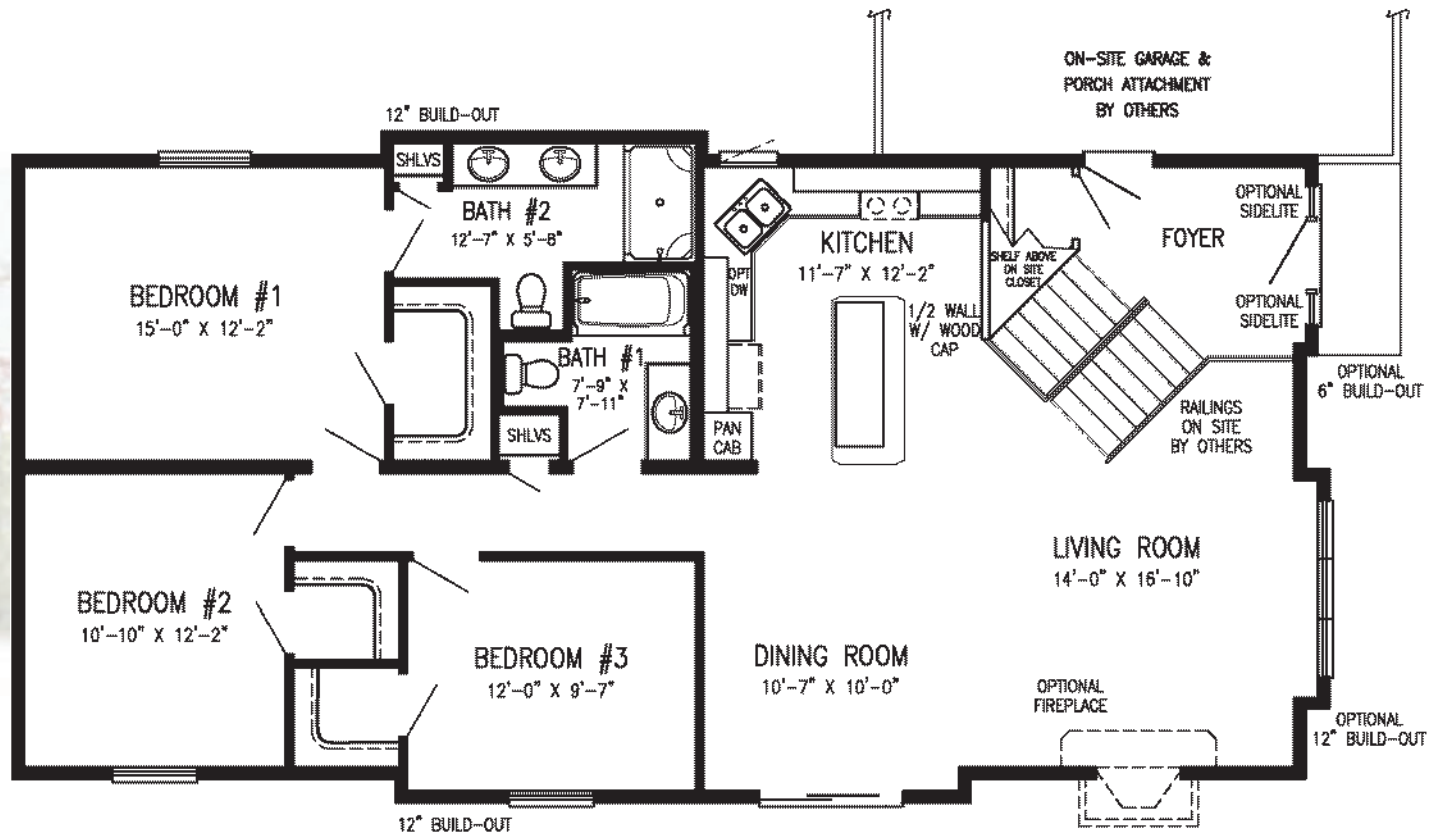
Depth: 26'/28'
Length: 54'

This plan features.....

- ❖ Master Suite
- ❖ Open Concept
- ❖ 3 Walk-In Closets
- ❖ Kitchen Island

1,442 Sq. Ft.

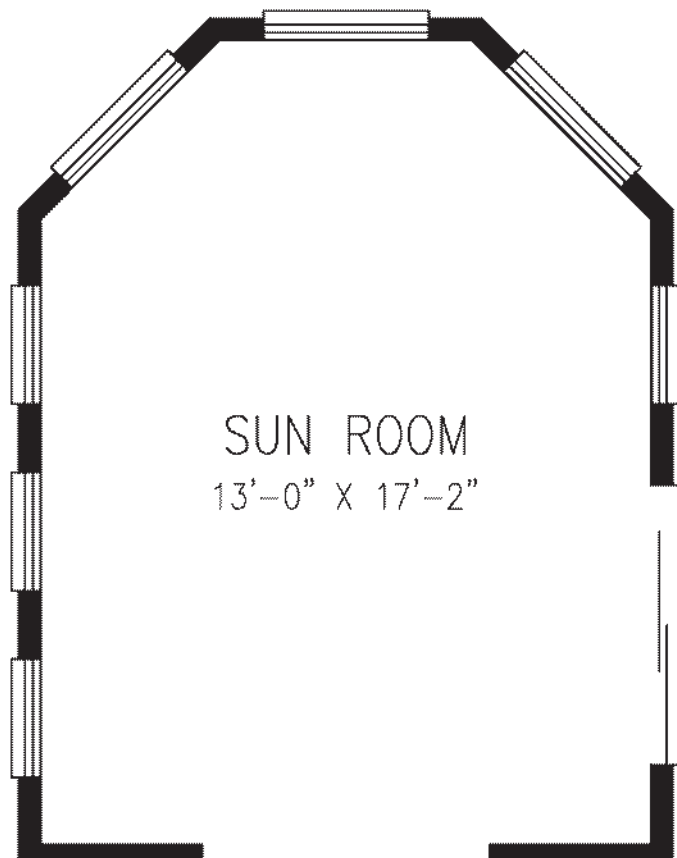
Bedrooms: 3
Bathrooms: 1 3/4



Bi-Level

Sun Room Design A

Sun Room



ROOM SIZE
236 Sq. Ft.
Depth: 18'
Length: 14'

Sun Room Design B



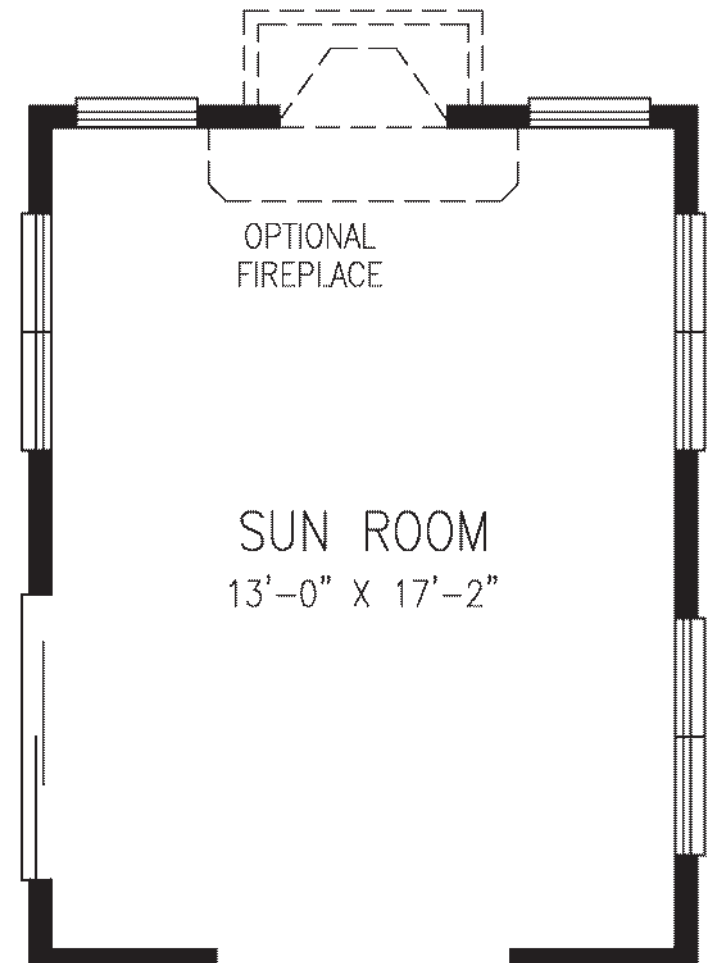
Artist rendering may contain optional features.

ROOM SIZE

252 Sq. Ft.

Depth: 18'

Length: 14'

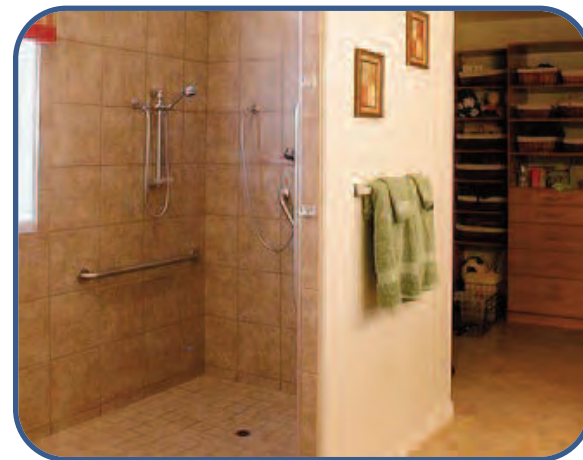



Sun Room

Designing a Home Today with Functionality for Tomorrow

At Stratford Homes, we want you to always feel right at home. That is why we offer Universal Design features and options which allow you to simplify your life today and into the future. Many of our plans already include amenities that make everyday living easier. For little cost, we can modify, or custom design a plan that will be more useable and benefit people of all ages and abilities. These innovative features make adjusting to life's changes much easier by using a diverse approach to homebuilding, a thought process that anticipates the needs of multigenerational households. Family members of all ages and abilities can enjoy features that maximize accessibility and ease of movement in your new home now and for years to come.

Universal Design is a set of standardized building principles based on the belief that a home can be designed to meet the needs of all generations and a home that will provide for enjoyable, independent living regardless of age or level of ability. If you would like to learn more about specific design features and how you can make your new home more functional, please contact your independent Stratford Homes Builder for a brochure explaining this intriguing concept in more detail.





The building process is quite simple and you begin with evaluating and selecting the right Builder for you. At Stratford Homes, we have a network of reputable, independent contractors that are encouraged to work directly with each home buyer and act as a guide through the entire building process. If you currently do not own land, your Builder may have relationships established with local realtors who can offer suggestions on available lots and acreage. They will help with floor plan selection or assist with custom designing a home that meets your needs and lifestyle. You will have the opportunity to select from an array of custom upgrades and options to truly personalize your new home.

Typically, your chosen Builder will offer turn-key construction and coordinate the entire building project from the groundwork up through the completion of your new home. This process usually includes acquiring the necessary permits, excavation, foundation work, plumbing, electrical, HVAC and the interior and exterior finish carpentry. Most Builders will have a thorough knowledge of the local trades-people and the ability to work with them during the early stages which helps reduce, if not eliminate, the chance for unexpected problems.

During the in-plant construction phase and before a home leaves the production facility, it is thoroughly inspected by an independent third-party agency for state and local building code compliance. Each home is built stronger than a conventional site-built home to withstand the rigors of transportation and lifting by a crane onto the prearranged foundation. Being constructed in a climate controlled environment by skilled craftspeople and using precise construction methods ensures that your new home will have consistent quality and energy performance. In addition to this advantage is the speed of construction, cost savings and overall construction efficiencies. Whether you're considering an expansive ranch or a towering two-story, modular construction is a viable option for nearly every new home buyer.



We encourage you to enjoy the inviting comfort and lasting pride of Stratford Homes.



Stratford Homes[®]

LIMITED PARTNERSHIP

custom modular designs

www.stratfordhomes.com

402 S Weber Ave • P.O. Box 37 • Stratford, WI 54484
Telephone: (715) 687.3133 • Toll Free: (800) 448.1524
Email: info@stratfordhomes.com



Lifestyle Series

