

American Dream

★ HOME COLLECTION ★



RANCH & BONUS RANCH PLANS



American Dream

★ HOME COLLECTION ★

Building a new home on land that you've chosen, and with the style and features you've always wanted, can be a very gratifying experience. After all – building a home just the way you'd like it – is a major expression of your ideas and vision.

Your new home should start with a great plan. Our American Dream catalog includes many of our most current and best designs. All of the plans can be personalized with your choice of special features and finishes or modified to embrace your own design concepts.

Whether your need is for a small and cozy cottage or for a grand, sprawling design, you've come to the right place. Our American Dream plans offer great exterior curb appeal and carefully planned interiors for lasting comfort and enjoyment.

Thank you for considering a Ritz Craft Custom Home. We look forward to making your new home the next and most important house we build.



ABOUT THIS BROCHURE:



Plan pages with this symbol are designated as **RANCH PLANS** and include a 7/12 pitch roof. An optional 7/12 pitch attic storage truss with a pull-down stair is available.



Plan pages with this symbol indicate **RANCH PLANS** that include a 7/12 (non-attic) roof that can be upgraded through purchase of the **BONUS RANCH OPTION** to include a stair to a site-finished upper level and a 9/12 pitch roof.



Plan pages with this symbol indicate **BONUS RANCH PLANS** that include the stair to the (site-finished) upper level and higher roof pitch.

- All homes can be built for full basement or crawl space foundation.
- Site-finished upper level areas in Bonus Ranch Plans are suggested layouts only. Discuss details with your selected Ritz Craft homebuilder.
- Baths that show a 48" shower (only) are listed as 3/4 Bath. Baths shown with a 60" shower or combination tub/shower are listed as Full Bath.

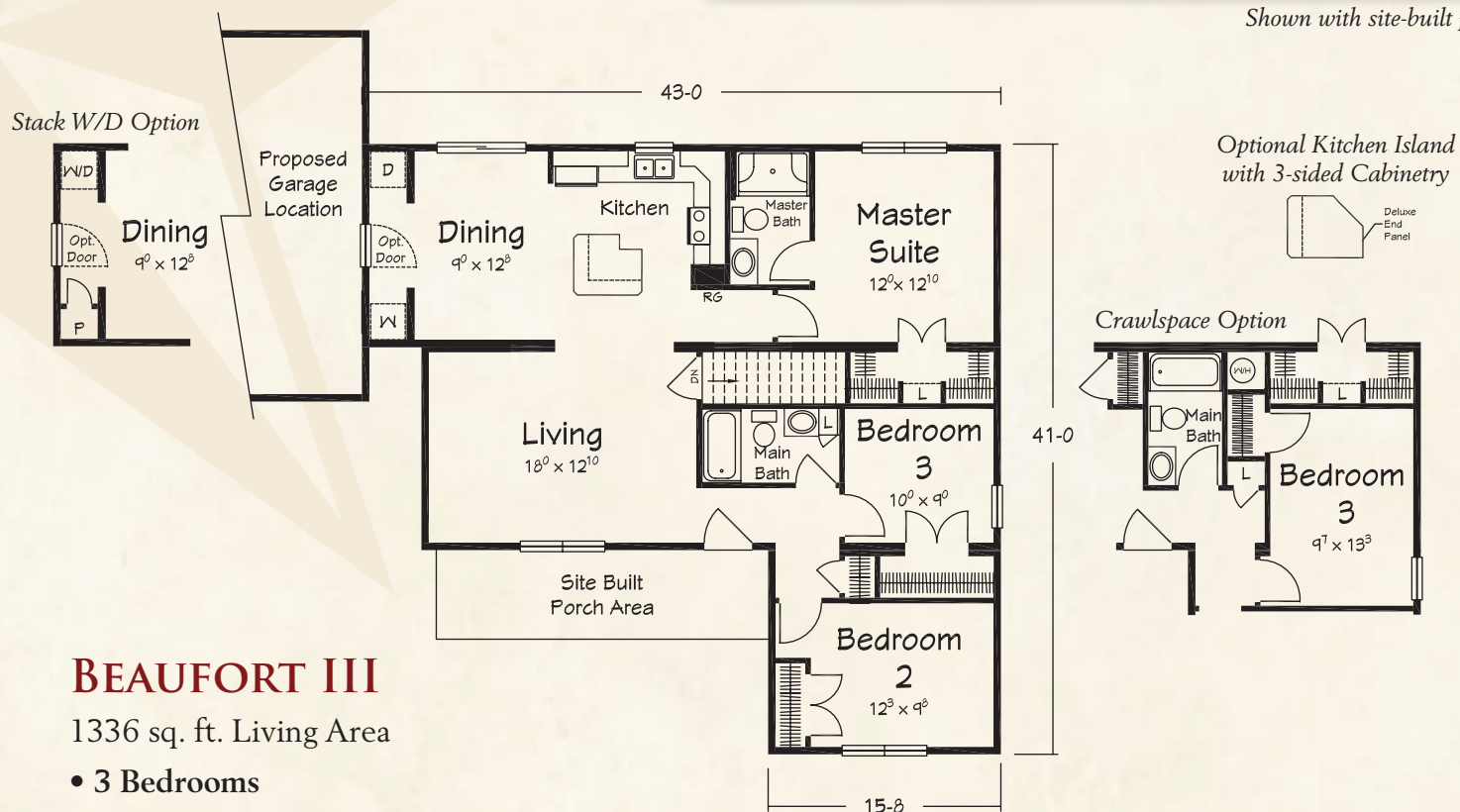
The BEAUFORT III RANCH PLAN



Attractive and affordable



Shown with site-built porch.



BEAUFORT III

1336 sq. ft. Living Area

- 3 Bedrooms
- 2 Full Baths



The GALA I A & II A RANCH PLAN



Functional and family-friendly



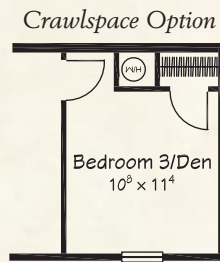
Gala II A shown with site-built porch.



GALA I A

1316 sq. ft. Living Area

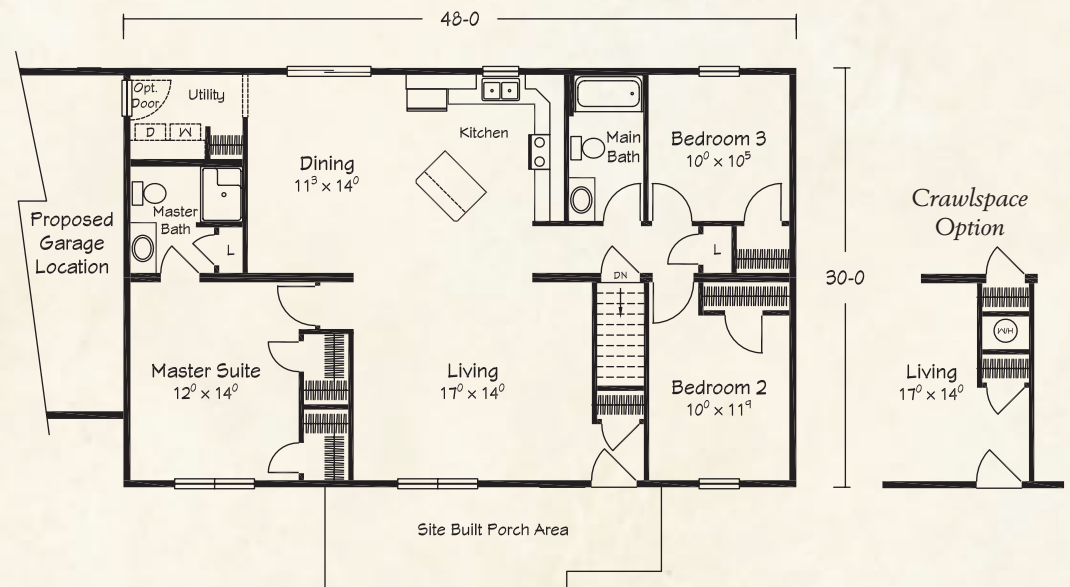
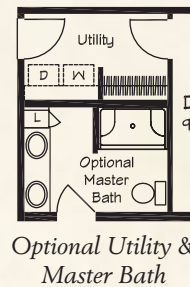
- 3 Bedrooms
- Full Bath
- 3/4 Bath



GALA II A

1436 sq. ft. Living Area

- 3 Bedrooms
- Full Bath
- 3/4 Bath



The GALA III A & IV A RANCH PLAN

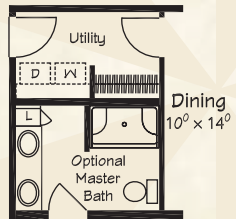


Wide open floor plans

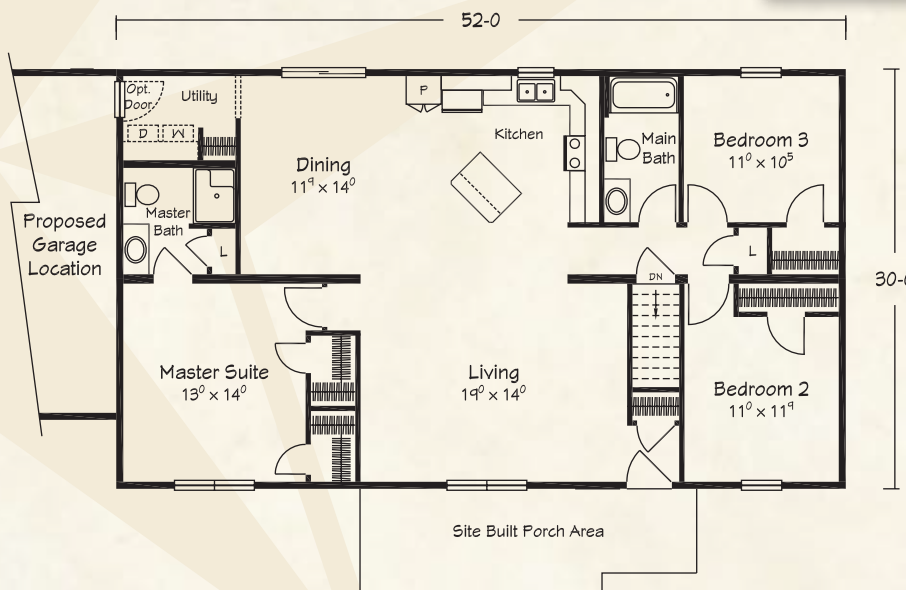


Gala IV A shown with site-built front porch.

Optional Utility & Master Bath



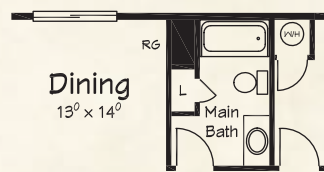
Crawlspace Option



GALA III A

1556 sq. ft. Living Area

- 3 Bedrooms
- Full Bath
- 3/4 Bath

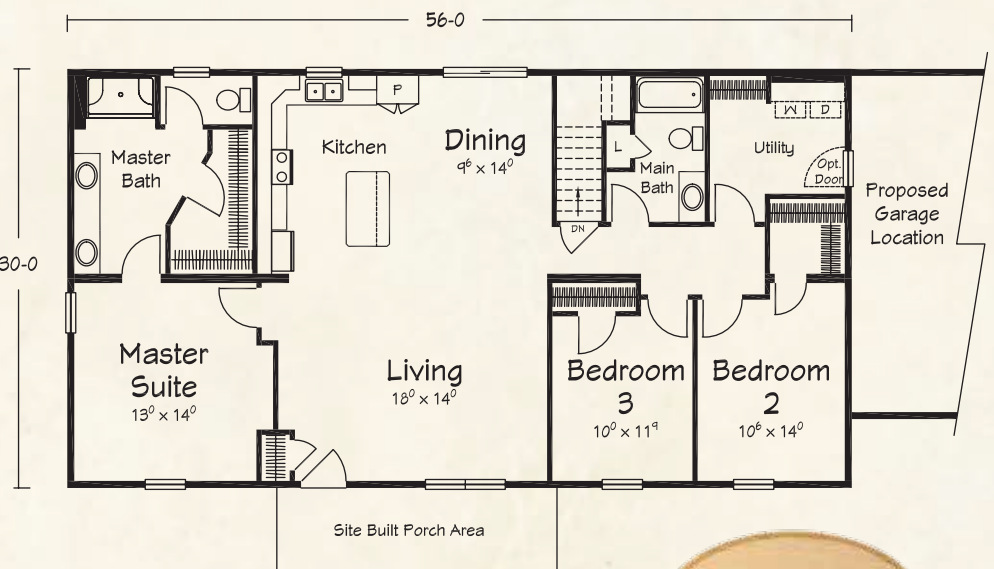


Crawlspace Option

GALA IV A

1675 sq. ft. Living Area

- 3 Bedrooms
- 2 Full Baths



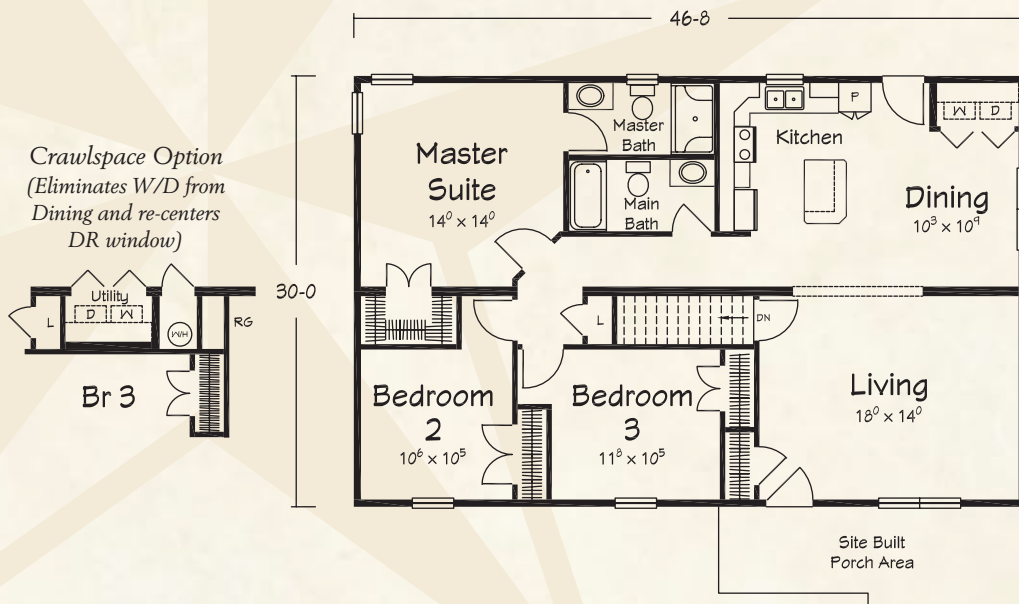
The JILLIAN III & IV RANCH PLAN



Comfy and cute!



Jillian III shown with site-built porch.



JILLIAN III

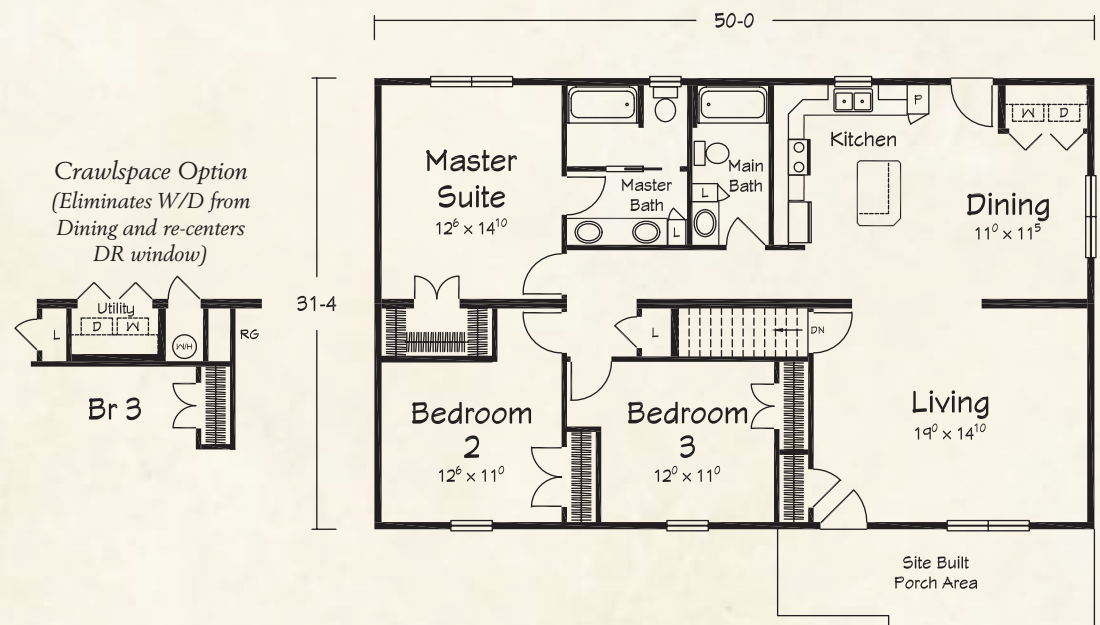
1396 sq. ft. Living Area

- 3 Bedrooms
- 2 Full Baths

JILLIAN IV

1567 sq. ft. Living Area

- 3 Bedrooms
- 2 Full Baths



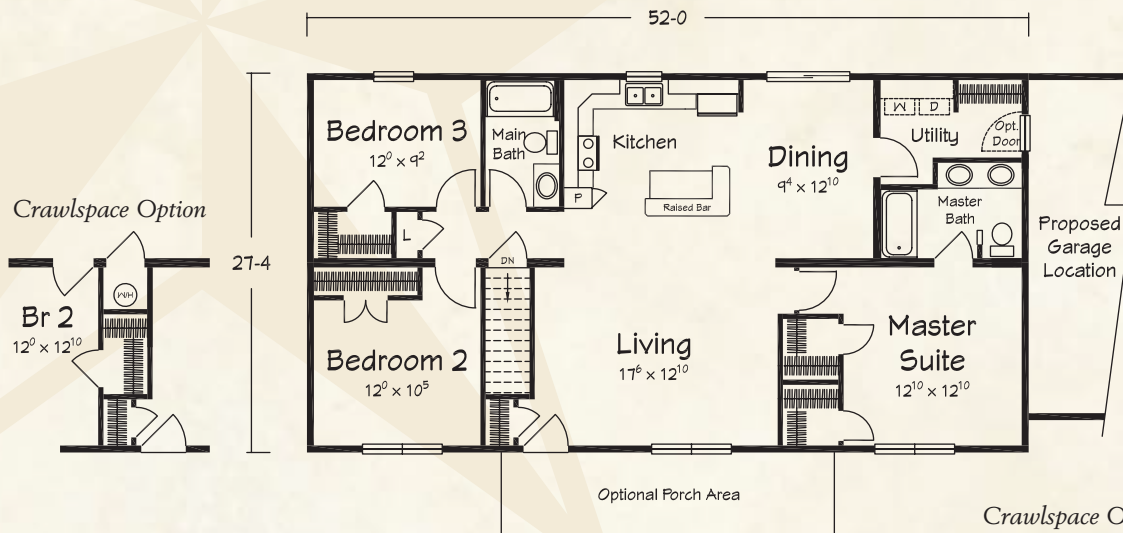
The NIAGARA II & III RANCH PLAN



Spacious, open floor plans



Shown with optional saddle roof/porch package.



NIAGARA II

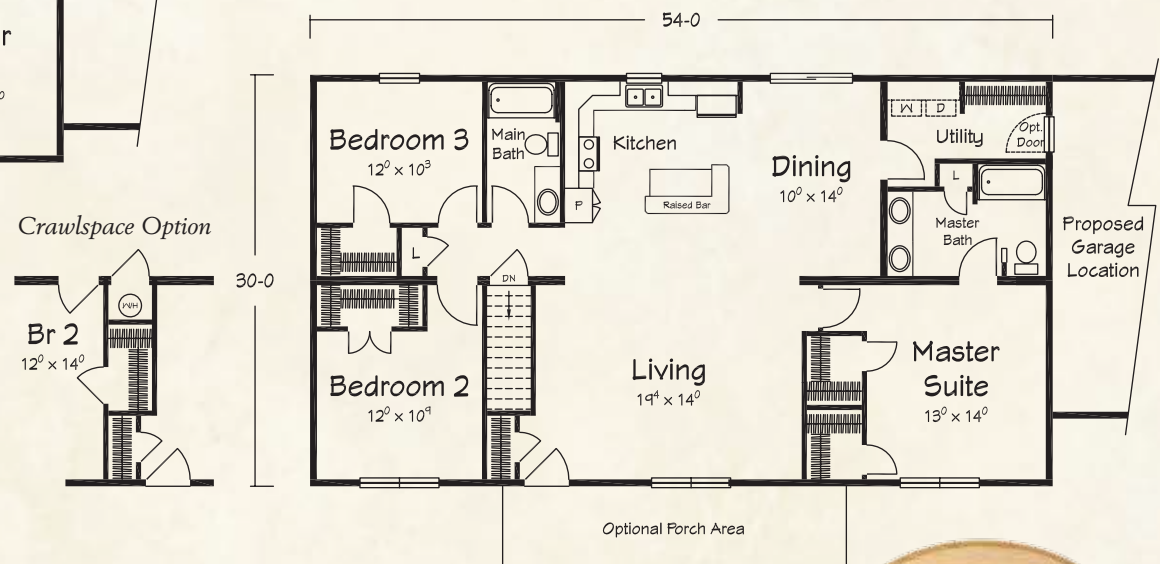
1420 sq. ft. Living Area

- 3 Bedrooms
- 2 Full Baths

NIAGARA III

1622 sq. ft. Living Area

- 3 Bedrooms
- 2 Full Baths



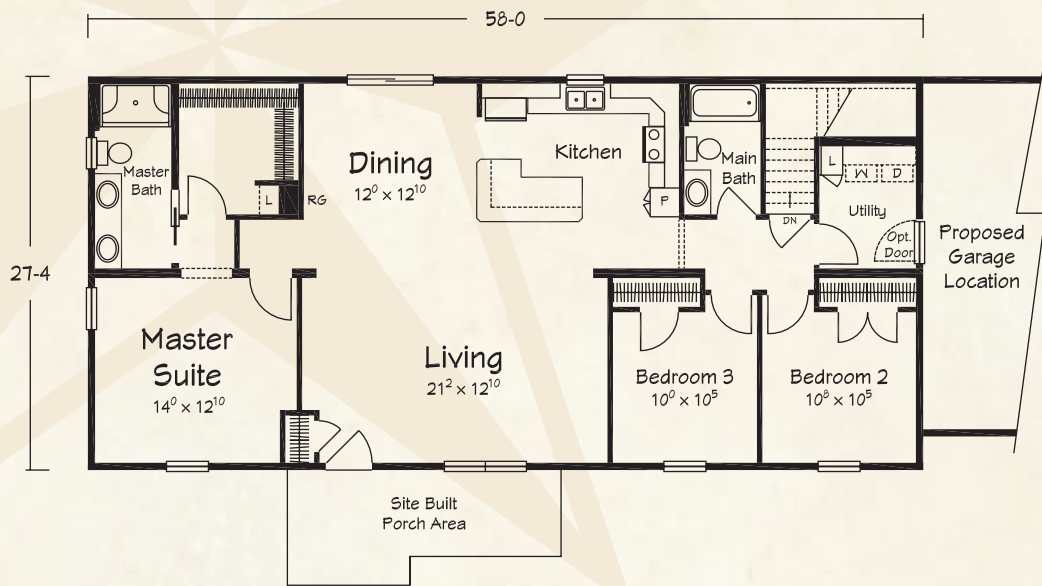
The FAIRCHILD II & III RANCH PLAN



Open and spacious floor plan



Shown with site-built porch.



FAIRCHILD II

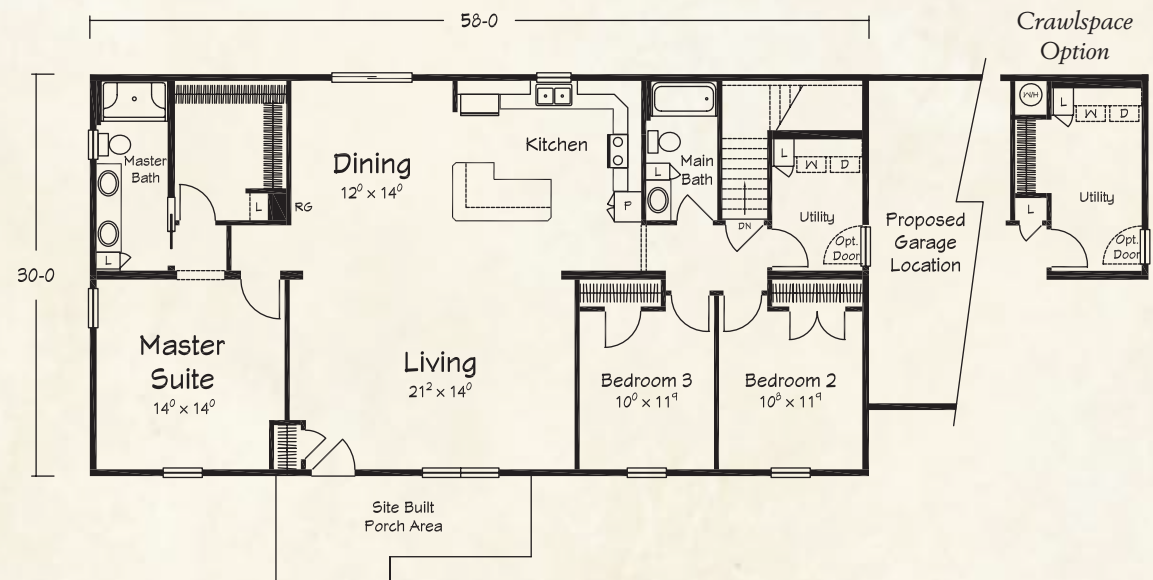
1585 sq. ft. Living Area

- 3 Bedrooms
- 2 Full Baths

FAIRCHILD III

1735 sq. ft. Living Area

- 3 Bedrooms
- 2 Full Baths



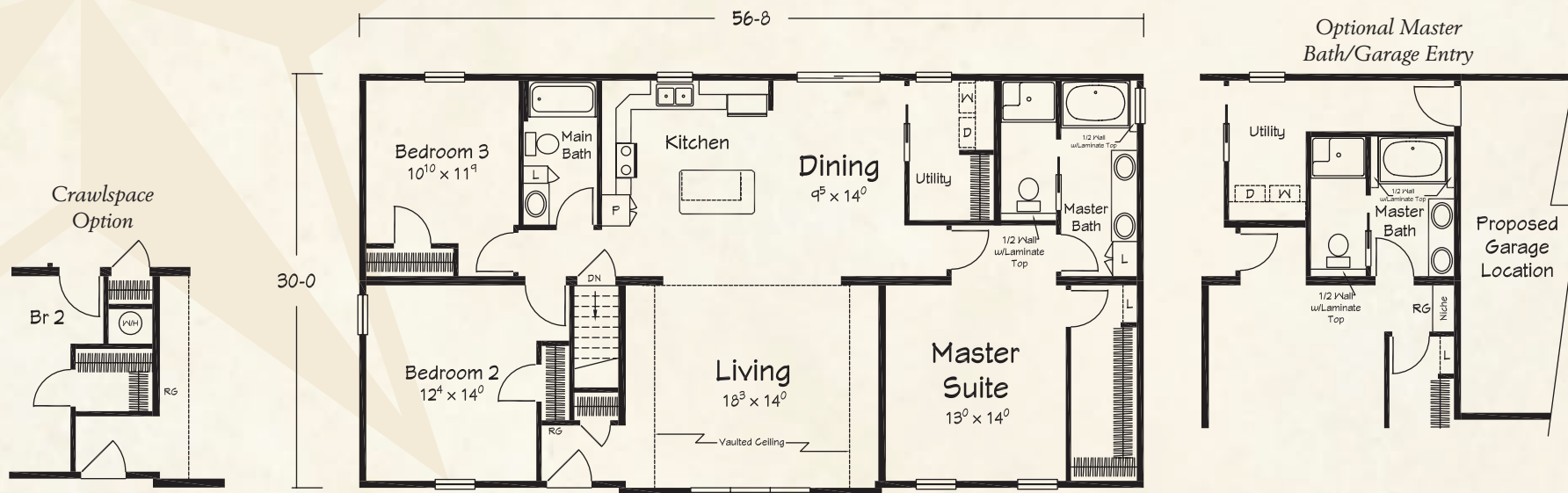
The JACOBS CREEK RANCH PLAN



Dramatic vaulted living area!



Shown with site-built porch.



JACOBS CREEK

1687 sq. ft. Living Area

- 3 Bedrooms
- 2 Full Baths



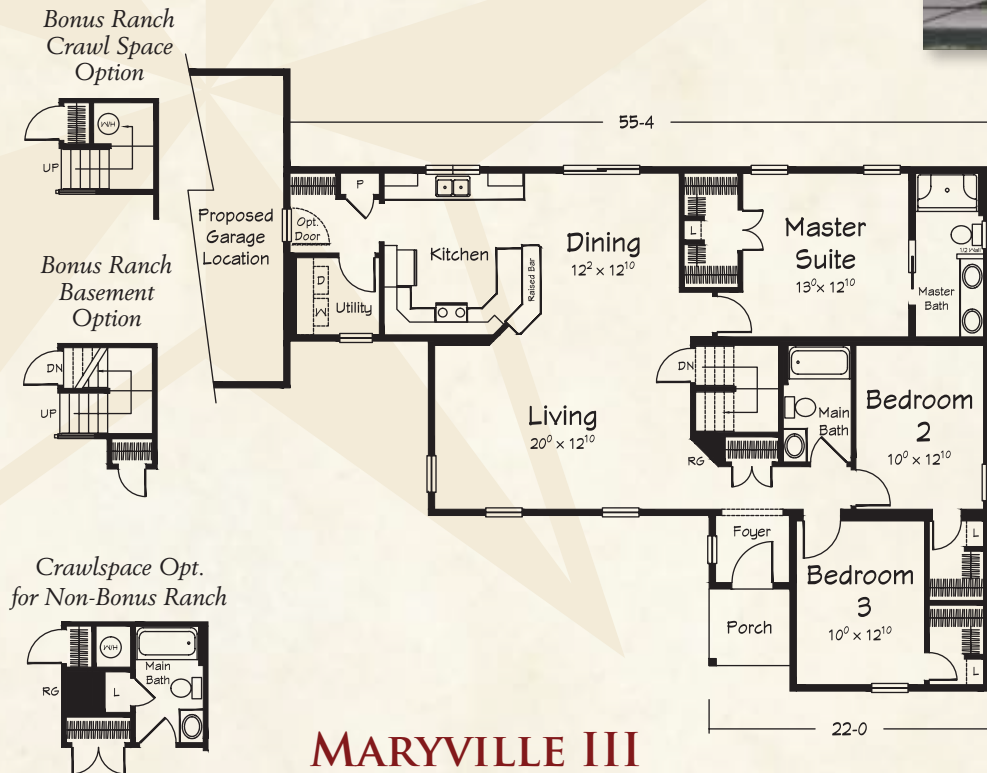
The MARYVILLE III RANCH PLAN



Charming exterior with spacious interior



Optional Bonus Ranch plan shown.

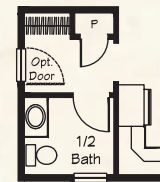


MARYVILLE III

1609 sq. ft. Living Area

- 3 Bedrooms
- 2 Baths

Non-Bonus Ranch Crawlspace Option

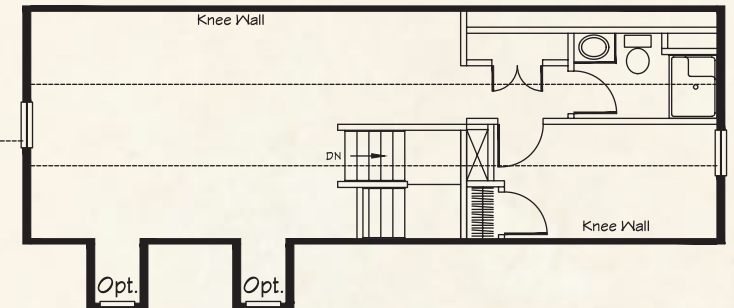
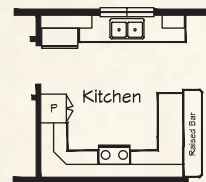


Non-Bonus Ranch Crawlspace Option



Utility Room
becomes a Pantry
w/this Option

Optional Kitchen



MARYVILLE II

Bonus Ranch Option adds
880 sq. ft. Upper Level

Please note: A dropped header beam replacing the flush ceiling area between the LR/Kit/Dining areas will be required to provide support for the upper level bonus area. Your Ritz Craft builder can verify requirements for your area.

The ANGELA II RANCH PLAN

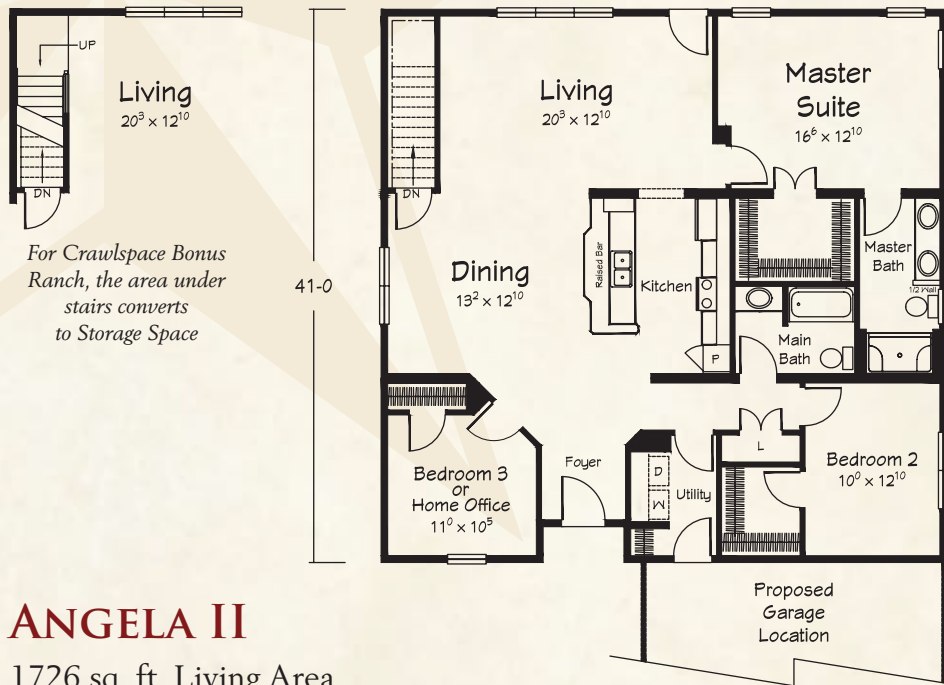


A large home for smaller lots

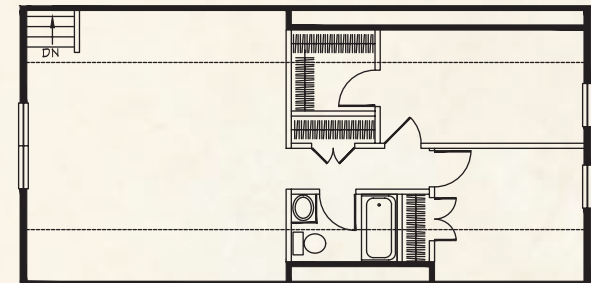
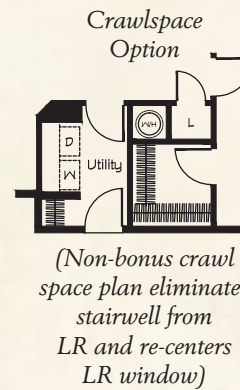


Ranch plan shown.

*Bonus Ranch Option
(for full basement)*



For Crawlspace Bonus Ranch, the area under stairs converts to Storage Space



ANGELA II
*Bonus Ranch Option adds
864 sq. ft. Upper Level*

ANGELA II
1726 sq. ft. Living Area

- 2-3 Bedrooms
- 2 Full Baths



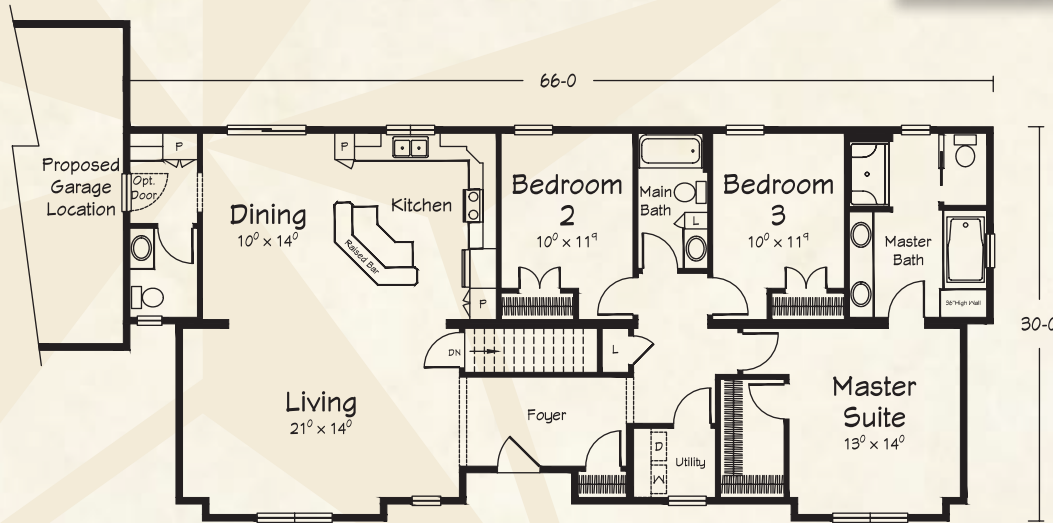
The AUDREY II RANCH PLAN



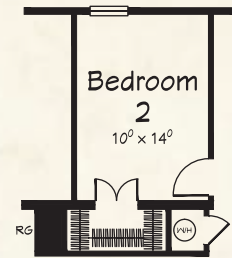
Classy, large ranch plan



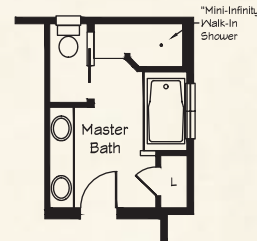
Ranch plan shown.



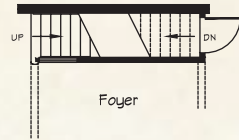
Crawspace option for Non-Bonus Ranch Plan



Optional Master Bath w/Mini Infinity Shower



Bonus Ranch Option



AUDREY II

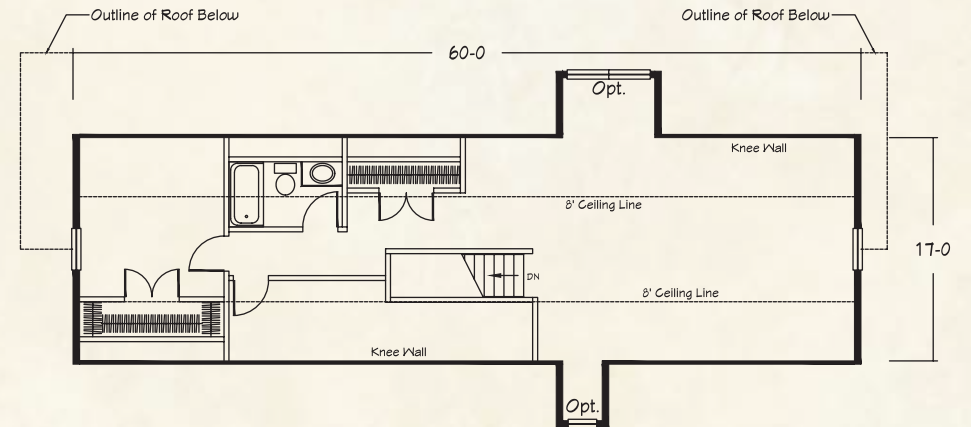
1822 sq. ft. Living Area

- 3 Bedrooms
- 2½ Baths

AUDREY II

Bonus Ranch Option adds

1152 sq. ft. Upper Level



Please note: A dropped header beam replacing the flush ceiling area between the LR/Kit/Dining areas will be required to provide support for the upper level bonus area. Your Ritz Craft builder can verify requirements for your area.

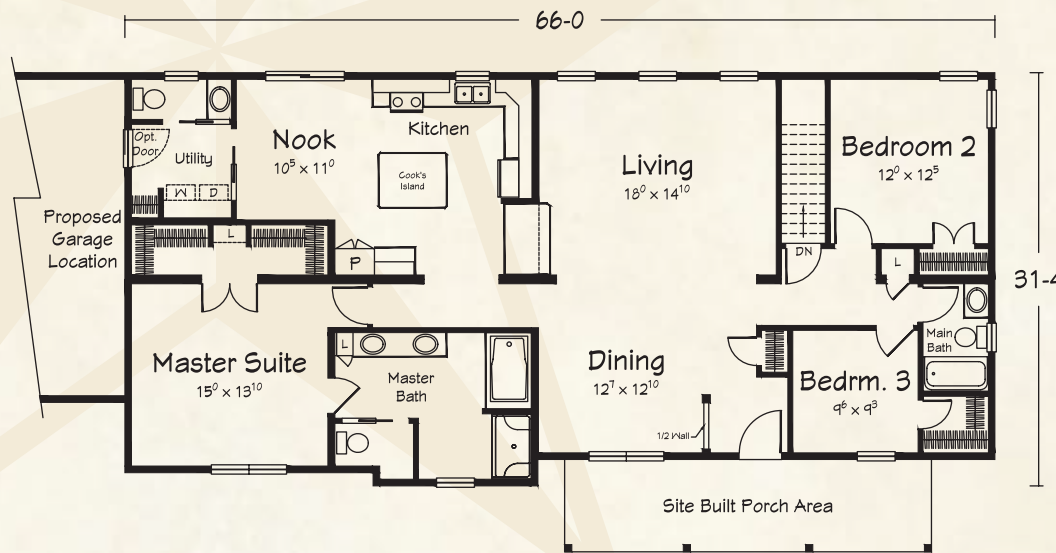
The WATERBURY II RANCH PLAN



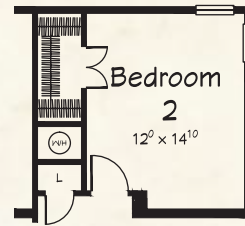
Chef's kitchen, elegant master suite



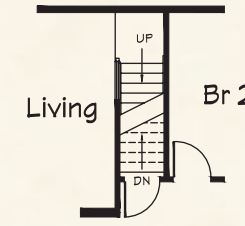
Optional Bonus Ranch shown with site-built porch.



Crawlspace option for Non-Bonus Ranch Plan



Bonus Ranch Option



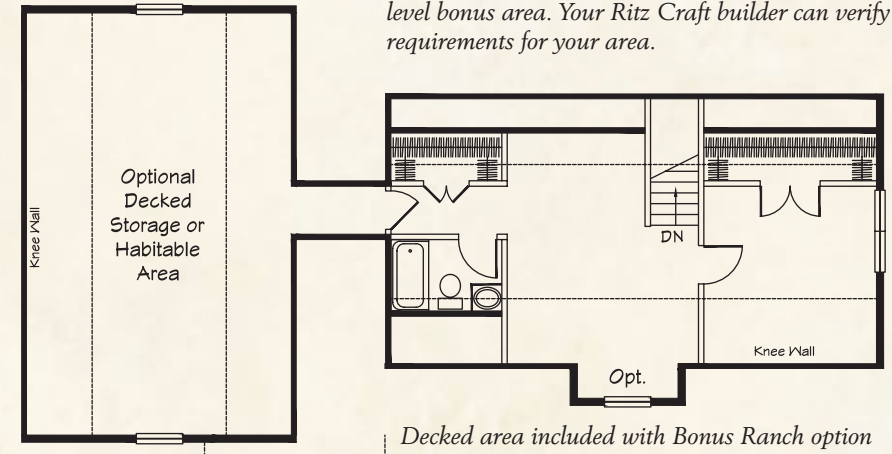
WATERBURY II
Bonus Ranch Option adds
 595 sq. ft. Upper Level

Please note: A dropped header beam replacing the flush ceiling area between the LR/Kit/Dining areas will be required to provide support for the upper level bonus area. Your Ritz Craft builder can verify requirements for your area.

WATERBURY II

1980 sq. ft. Living Area

- 3 Bedrooms
- 2½ Baths



Decked area included with Bonus Ranch option



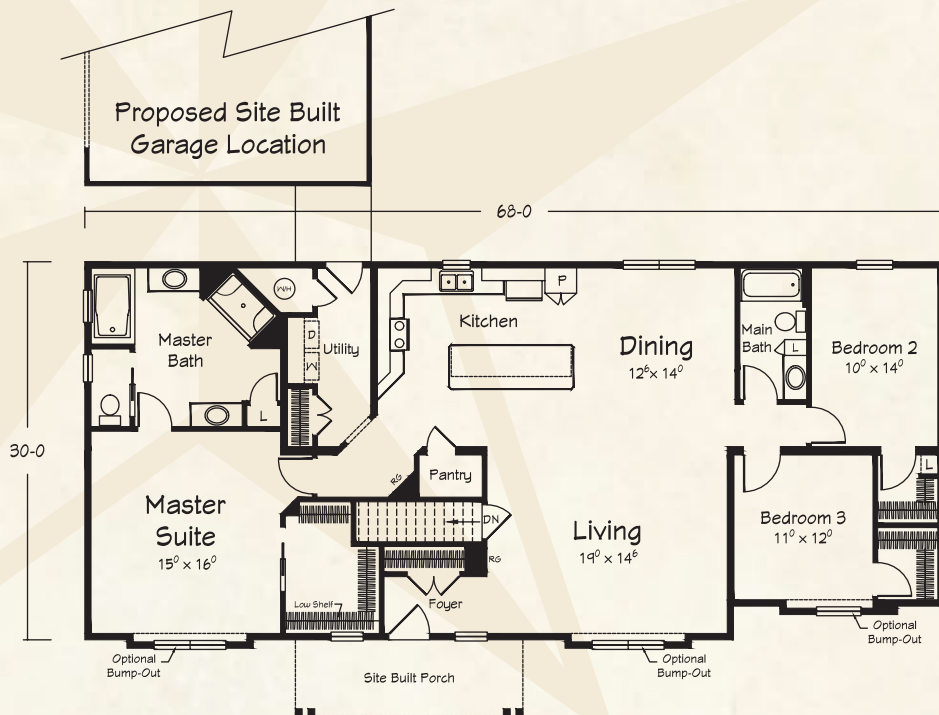
The SHELTON CREEK RANCH PLAN



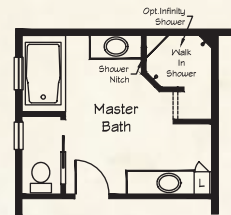
Dream kitchen, dreamy closets



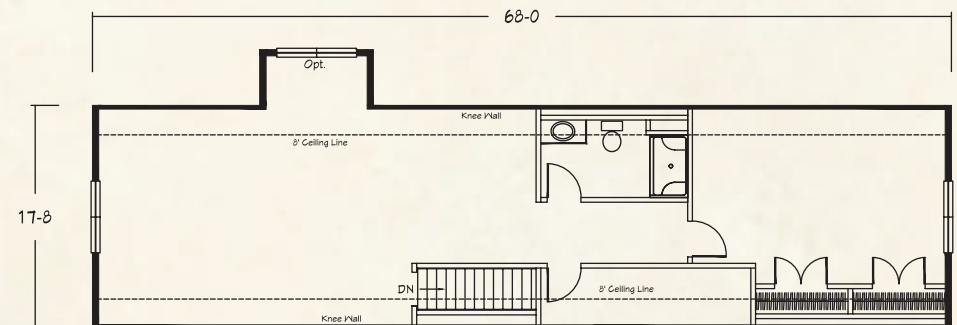
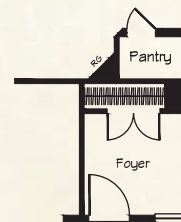
Ranch plan shown with site-built porch.



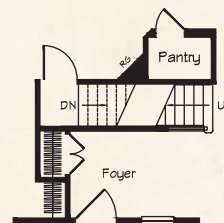
Optional Master Bath w/Infinity Shower



Crawlspace Option



Bonus Ranch Option



*Basement Configuration
(Water Heater shipped for basement installation)*

SHELTON CREEK

2009 sq. ft. Living Area

- 3 Bedrooms
- 2 Full Baths

SHELTON CREEK

Bonus Ranch Option adds
1202 sq. ft. Upper Level

Please note: A dropped header beam replacing the flush ceiling area between the LR/Kit/Dining areas will be required to provide support for the upper level bonus area. Your Ritz Craft builder can verify requirements for your area.

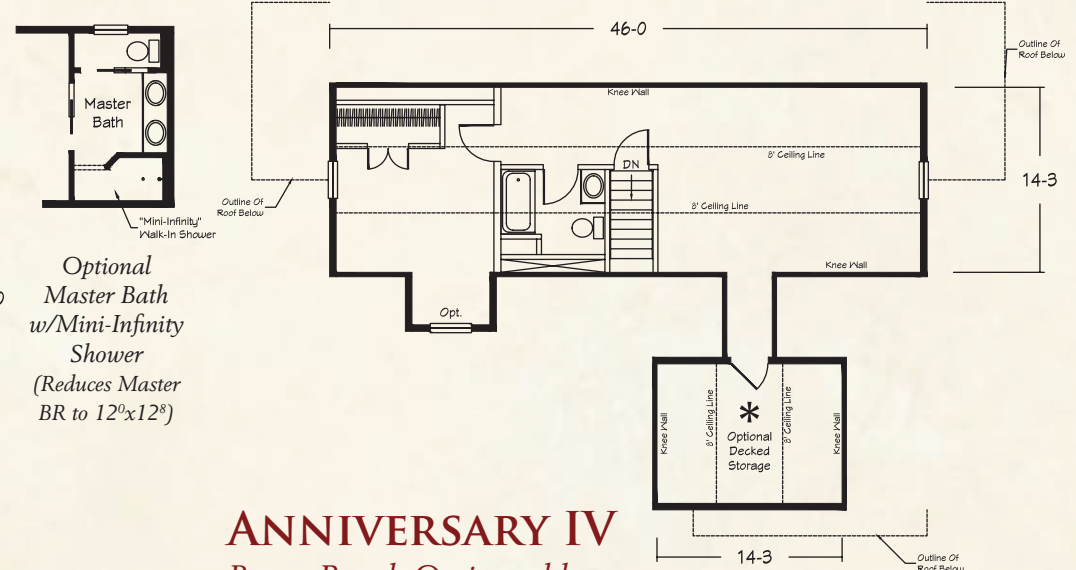
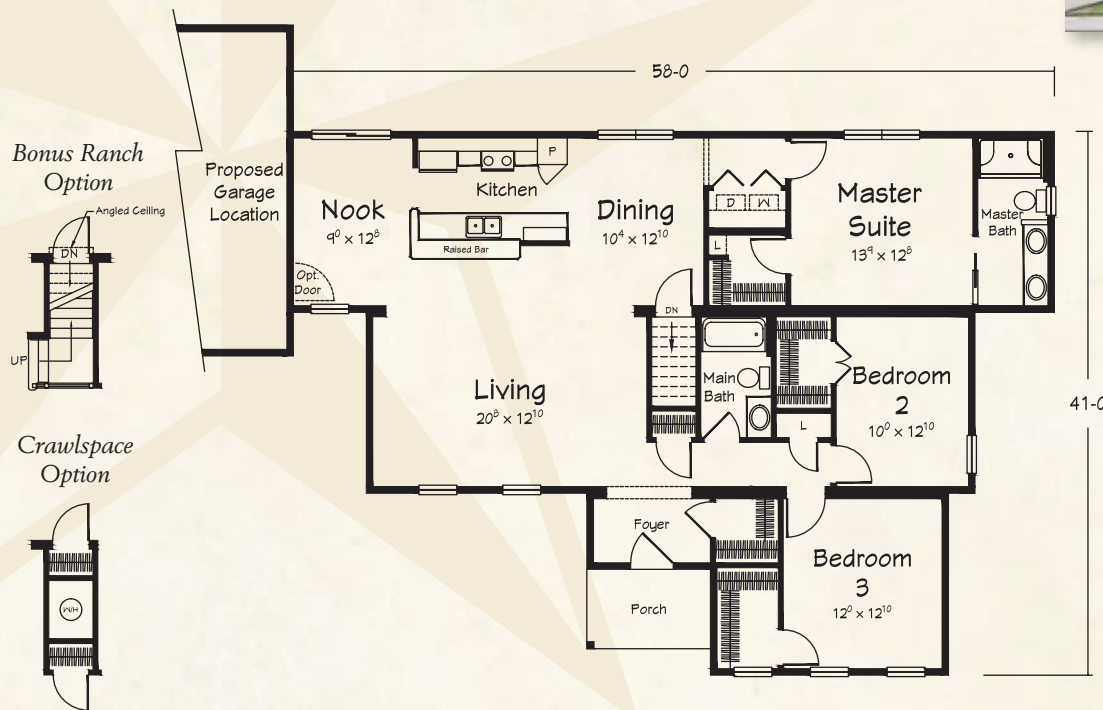
The ANNIVERSARY IV RANCH PLAN



Classic Arts & Crafts style



Shown with Bonus Ranch option.



ANNIVERSARY IV Bonus Ranch Option adds 686 sq. ft. Upper Level

* Additional 175 sq. ft. available

Please note: A dropped header beam replacing the flush ceiling area between the LR/Kit/Dining areas will be required to provide support for the upper level bonus area. Your Ritz Craft builder can verify requirements for your area.

ANNIVERSARY IV

1750 sq. ft. Living Area

- 3 Bedrooms
- 2 Full Baths



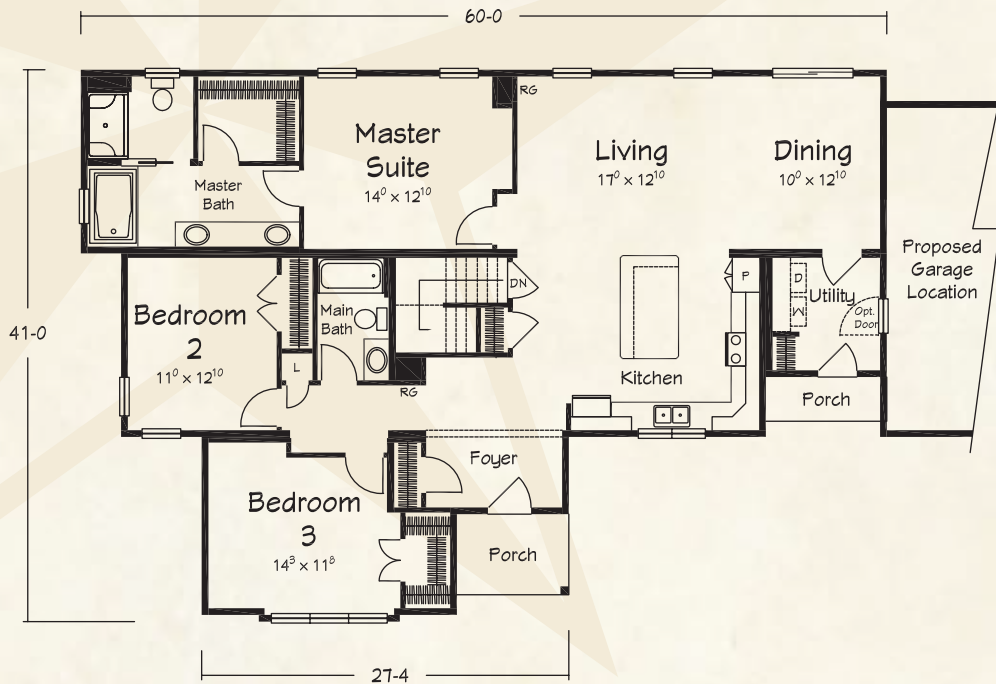
The HORIZON RANCH PLAN



A casual and elegant open plan



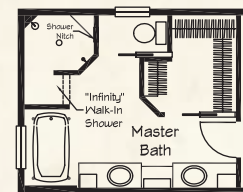
Optional Bonus Ranch shown.



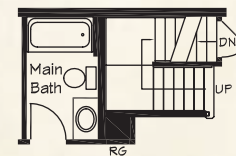
HORIZON

1864 sq. ft. Living Area

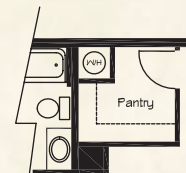
- 3 Bedrooms
- 2 Full Baths



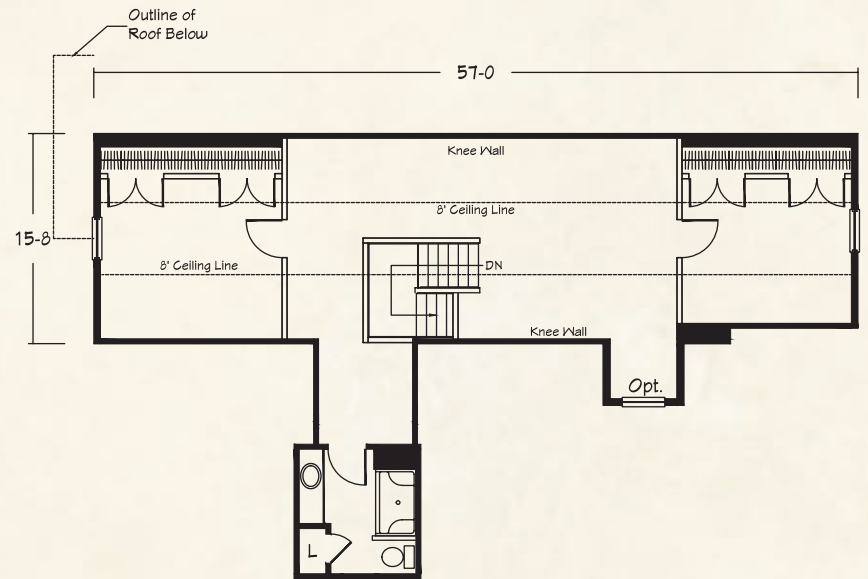
Optional Master Bath w/Custom Vanity Cabs, Infinity Shower & Claw-foot tub



Bonus Ranch Stairwell Option



Crawlspace Option



HORIZON

Bonus Ranch Option adds
1064 sq. ft. Upper Level

Please note: A dropped header beam replacing the flush ceiling area between the LR/Kit/Dining areas may be required to provide support for the upper level bonus area. Your Ritz Craft builder can verify requirements for your area.

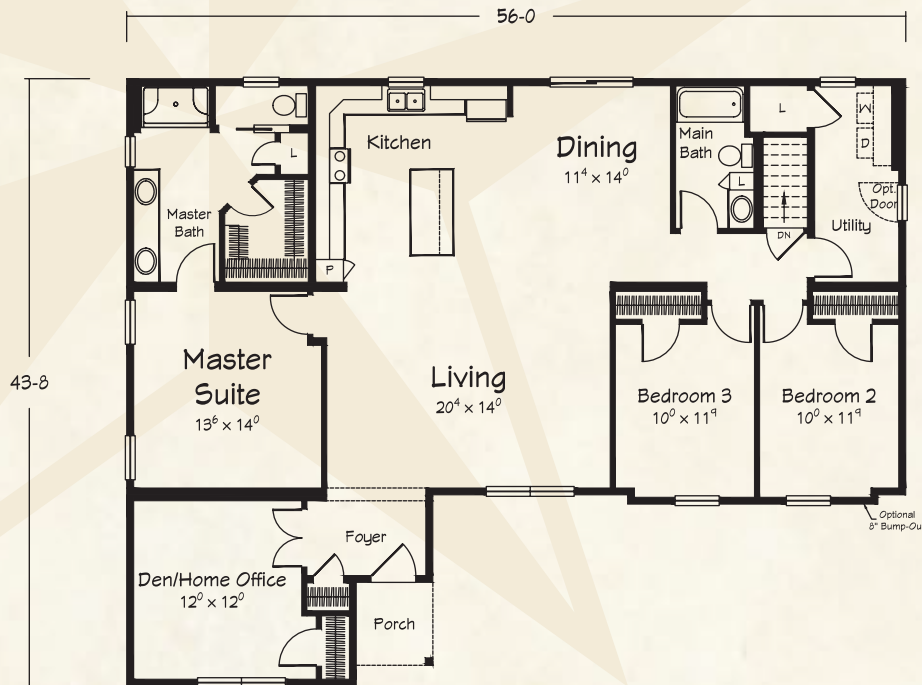
The TRIPLE CROWN RANCH PLAN



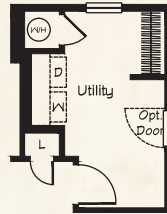
Elegant master suite, great home office



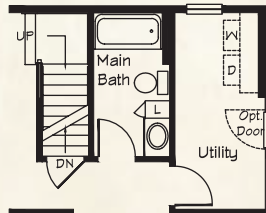
Ranch plan shown.



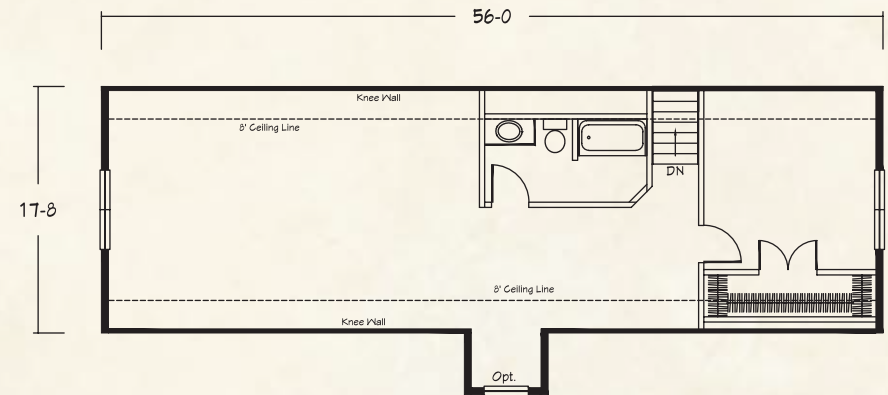
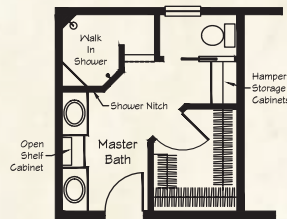
Crawlspace Option



Bonus Ranch Option



Optional Master Bath w/Infinity Shower & Custom Vanities



TRIPLE CROWN Bonus Ranch Option adds 989 sq. ft. Upper Level

Please note: A dropped header beam replacing the flush ceiling area between the LR/Kit/Dining areas will be required to provide support for the upper level bonus area. Your Ritz Craft builder can verify requirements for your area.

TRIPLE CROWN

1949 sq. ft. Living Area

- 3-4 Bedrooms
- 2 Full Baths



The ABIGAIL II RANCH PLAN

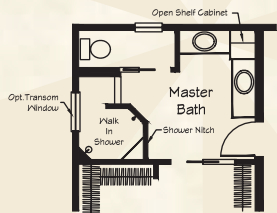


Great open plan with nicely connected family areas



Optional Bonus Ranch shown.

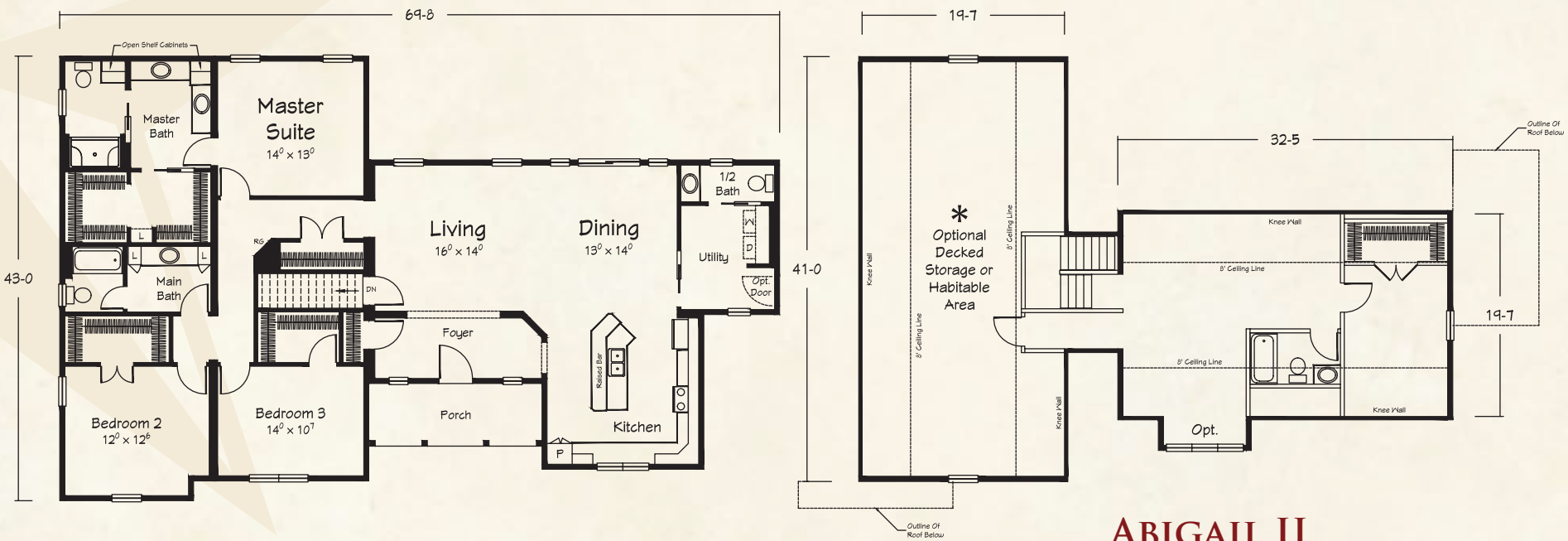
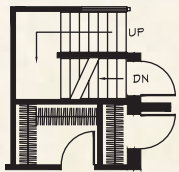
Optional Master Bath w/Infinity Shower



Crawlspace Option



Bonus Ranch Option



ABIGAIL II

2197 sq. ft. Living Area

- 3 Bedrooms
- 2½ Baths

ABIGAIL II

Bonus Ranch Option adds 656 sq. ft. Upper Level

* Additional 802 sq. ft. available

The BERRYVILLE II RANCH PLAN

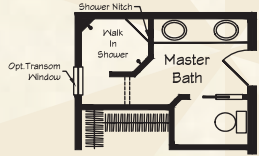


Estate style ranch

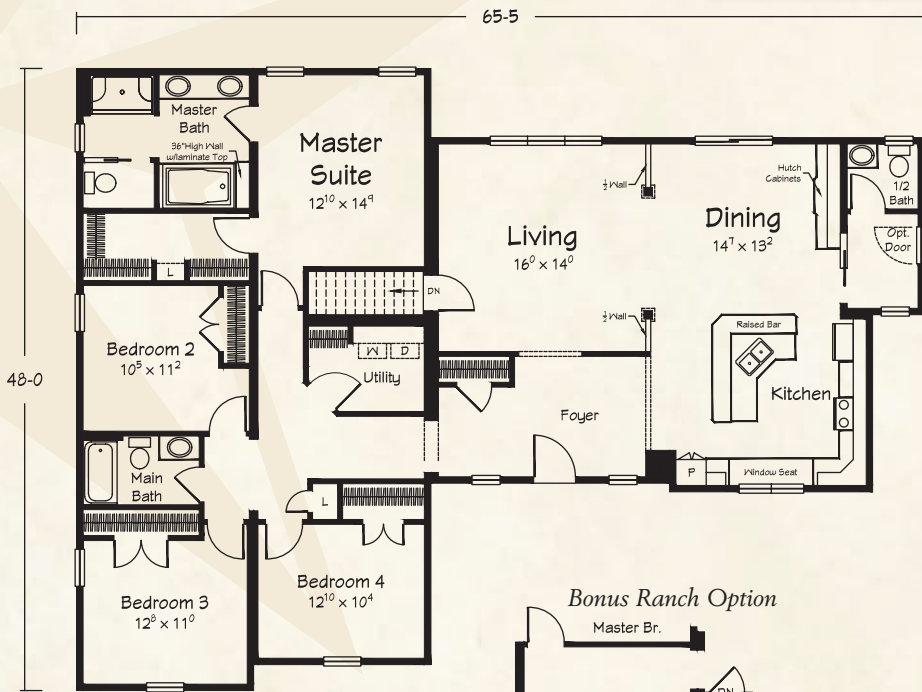
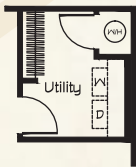


Ranch plan shown with site-built porch.

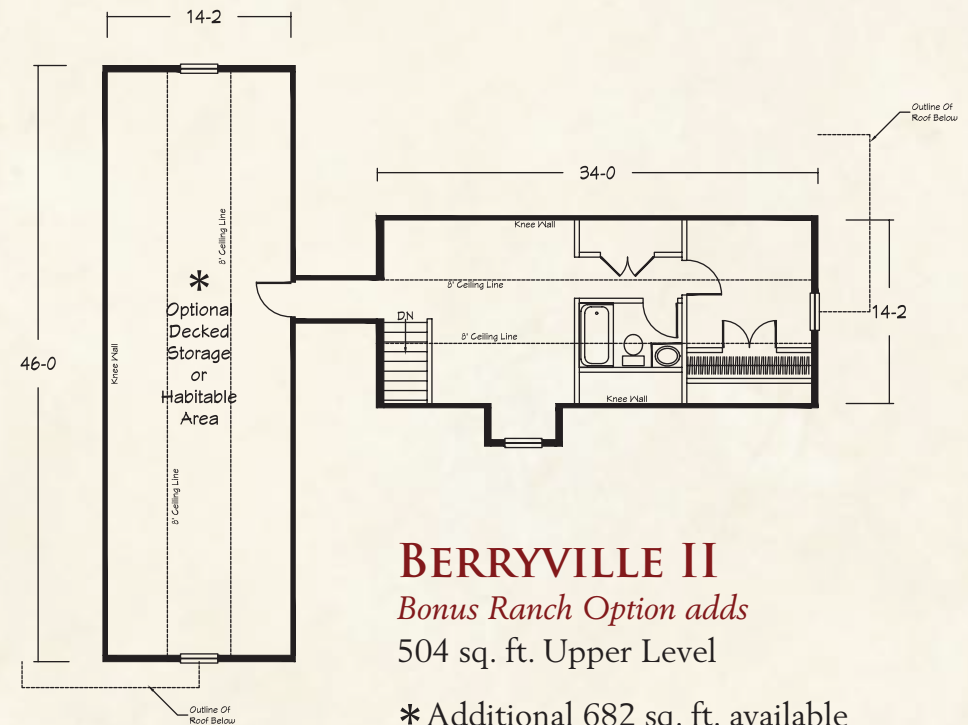
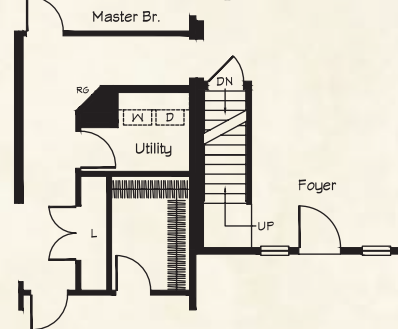
*Optional Master Bath
w/Infinity Shower*



*Crawlspace
Option
Master Br.*



Bonus Ranch Option



BERRYVILLE II
Bonus Ranch Option adds
504 sq. ft. Upper Level

* Additional 682 sq. ft. available

BERRYVILLE II
2262 sq. ft. Living Area

- 4 Bedrooms
- 2½ Baths



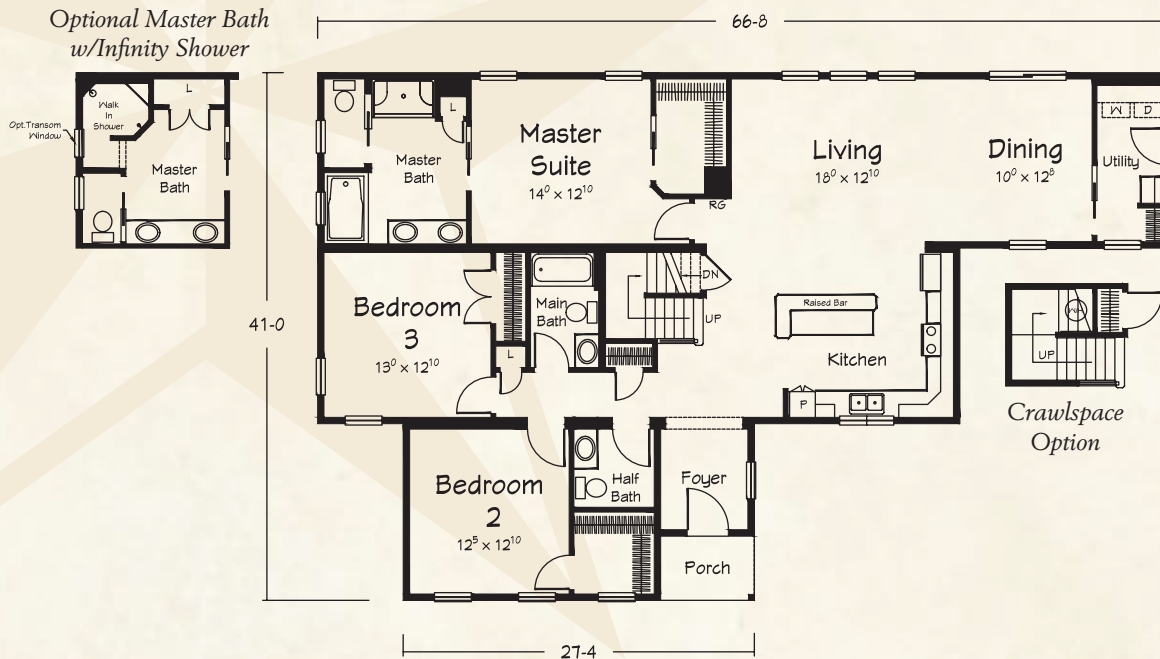
The JOANNA II BONUS RANCH PLAN



Large plan with room to grow



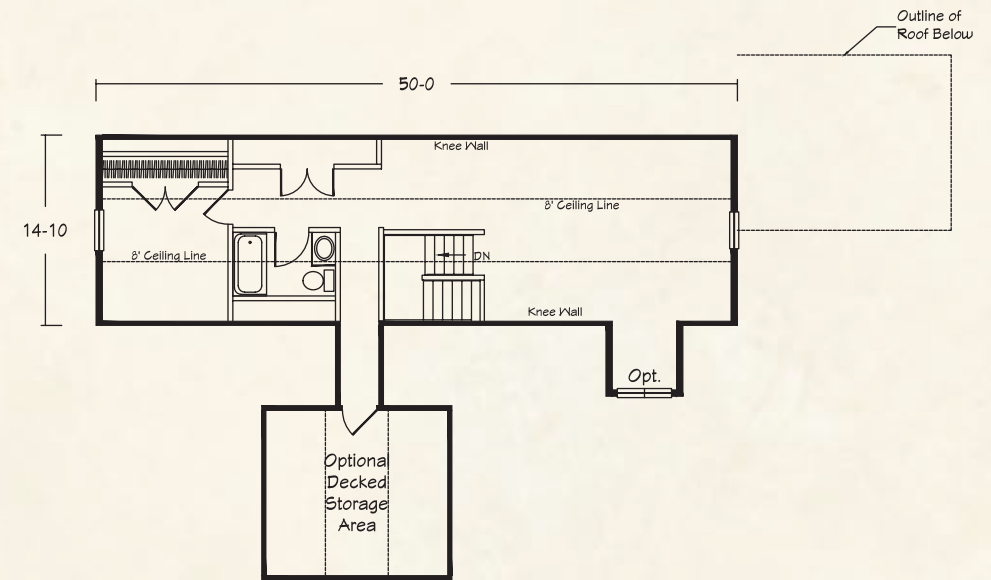
Shown with optional 12/12 pitch roof--standard roof is 9/12 for this plan.



JOANNA II

1934 sq. ft. First Floor Living Area

- 3 Bedrooms
- 2½ Baths



JOANNA II

745 sq. ft. Proposed Upper Level

Please note: A dropped header beam replacing the flush ceiling area between the LR/Kit/Dining areas will be required to provide support for the upper level bonus area. Your Ritz Craft builder can verify requirements for your area.

The MACY II

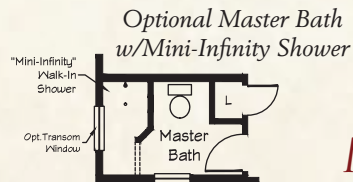
BONUS RANCH PLAN



Great room plan – great for entertaining



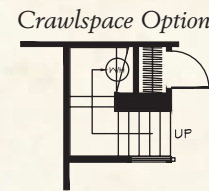
Shown with standard "tri-mod 7/12" roof. Optional 9/12 pitch available.



MACY II

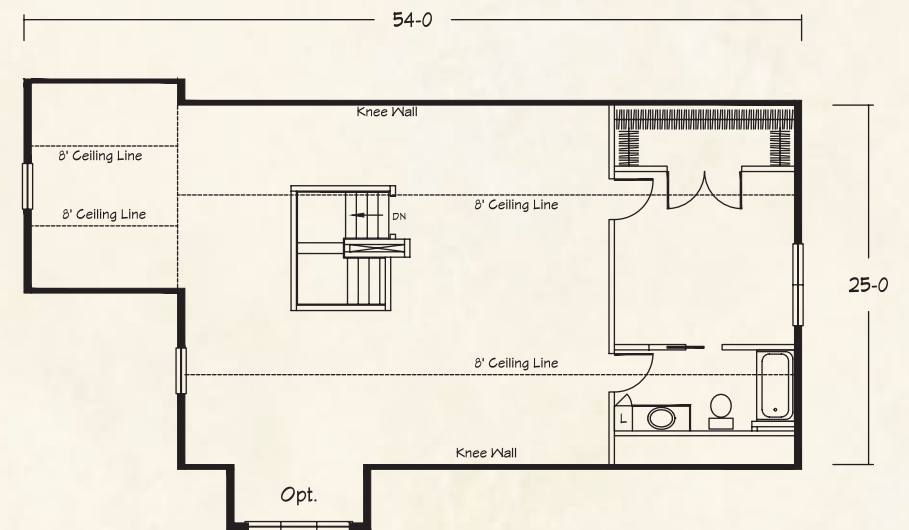
2026 sq. ft. First Floor Living Area

- 3 Bedrooms
- 2½ Baths



MACY II

1270 sq. ft. Proposed Upper Level



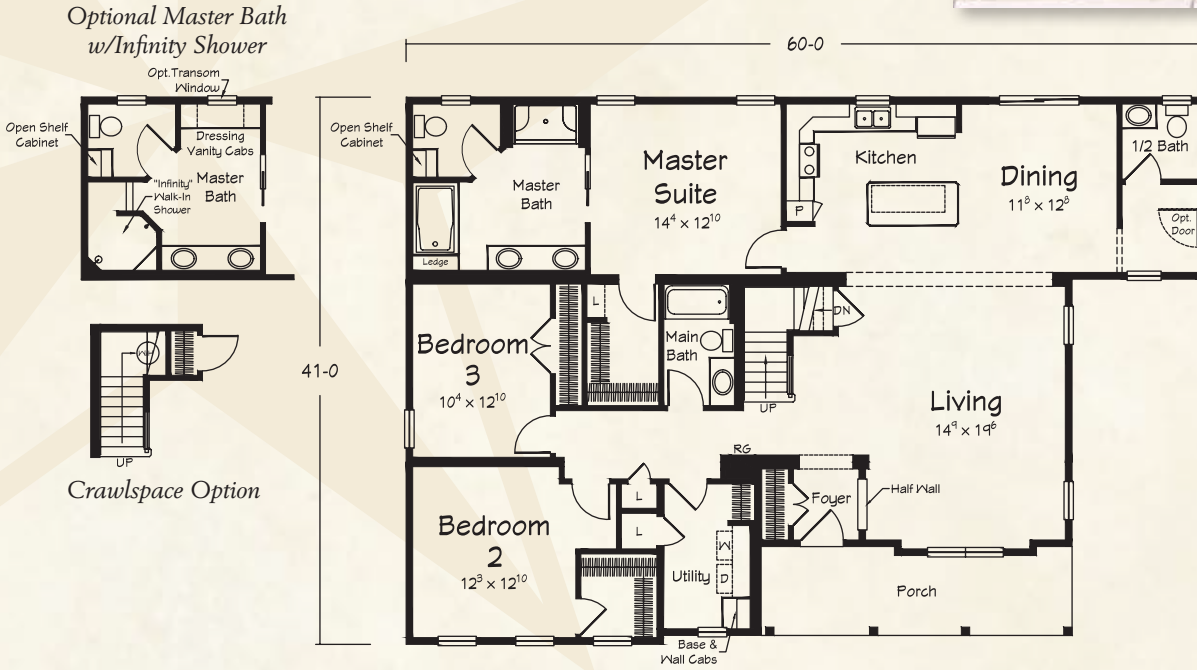
The MINT HILL II BONUS RANCH PLAN



Inviting front porch, comfortable floor plan



Shown with standard "tri-mod 7/12" roof. Optional 9/12 pitch available.



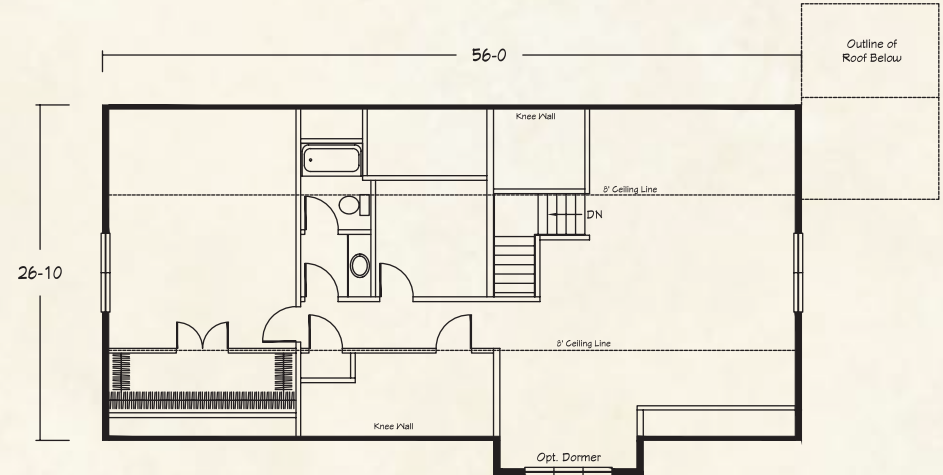
MINT HILL II

2022 sq. ft. First Floor Living Area

- 3 Bedrooms
- 2½ Baths

MINT HILL II

1505 sq. ft. Proposed Upper Level



The DANIELLE II BONUS RANCH PLAN

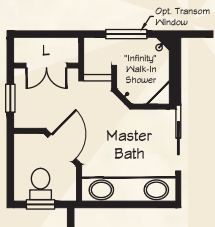


Four bedroom plan with Chef's kitchen

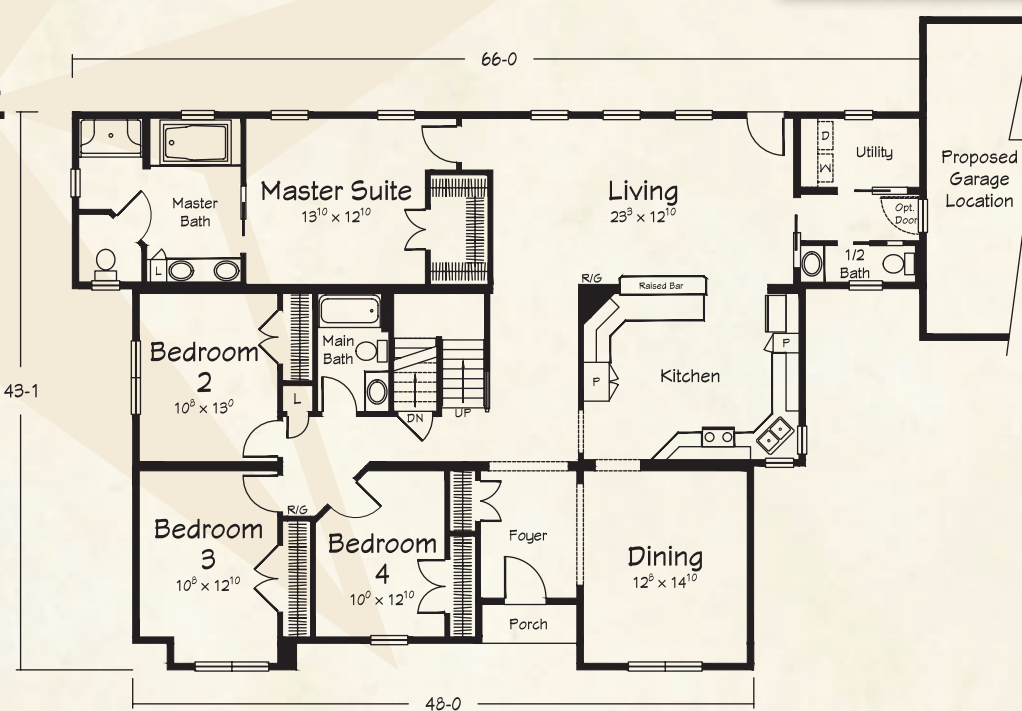


Shown with optional 9/12 pitch roof--standard roof for this plan is "tri-mod 7/12".

Optional Master Bath
w/Infinity Shower

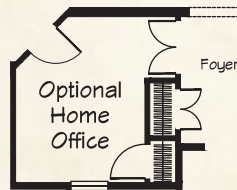
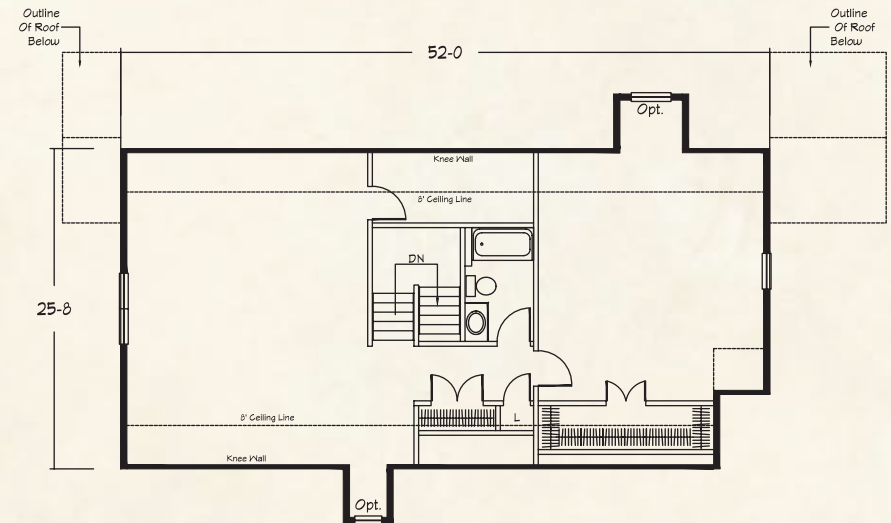


Crawlspace Option



DANIELLE II

1330 sq. ft. Proposed Upper Level



Optional Home Office

DANIELLE II

2300 sq. ft. First Floor Living Area

- 4 Bedrooms
- 2½ Baths

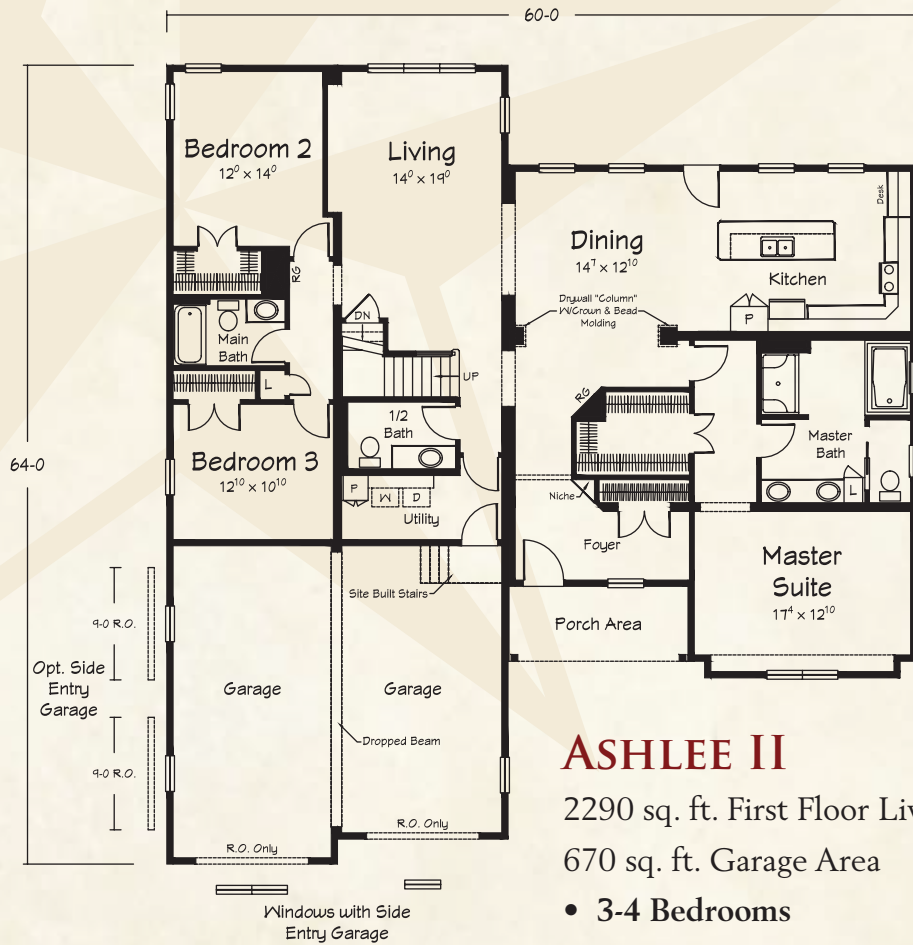


The ASHLEE II

BONUS RANCH PLAN



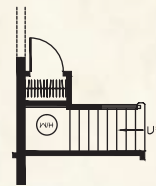
Large plan with great expansion possibilities



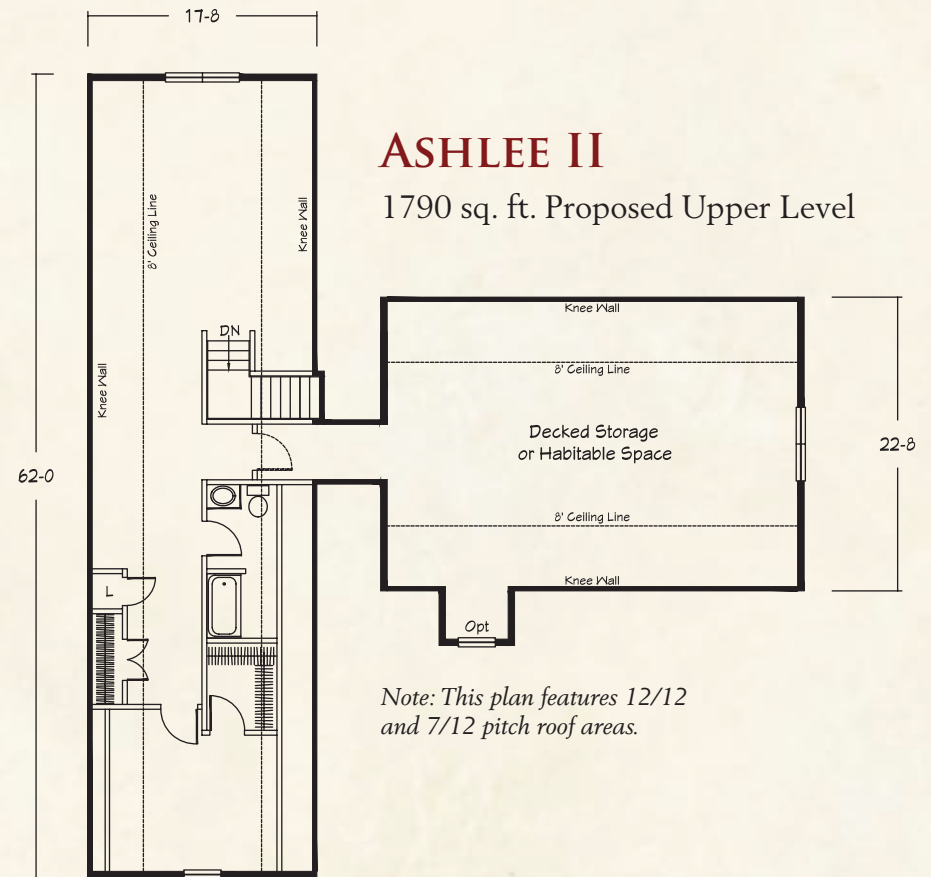
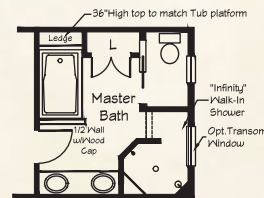
ASHLEE II
 2290 sq. ft. First Floor Living Area
 670 sq. ft. Garage Area

- 3-4 Bedrooms
- 2½ Baths

Crawlspace Option



Optional Master Bath w/Infinity Shower



ASHLEE II
 1790 sq. ft. Proposed Upper Level

Note: This plan features 12/12 and 7/12 pitch roof areas.

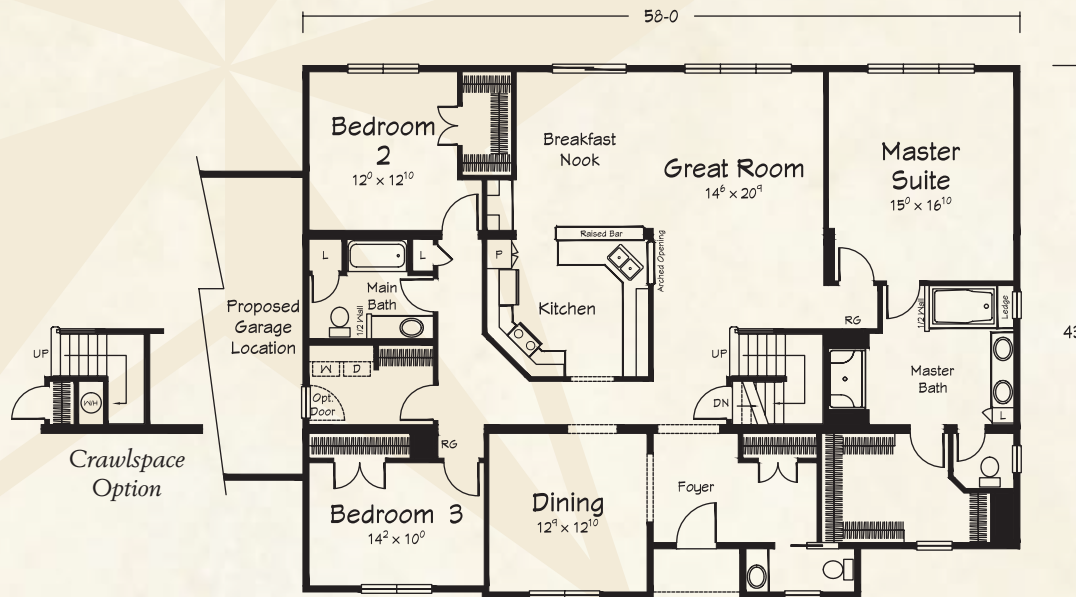
The SAMANTHA BONUS RANCH PLAN



Fabulous for entertaining, fantastic master suite



Shown with optional 9/12 pitch roof--standard roof for this plan is "tri-mod 7/12".

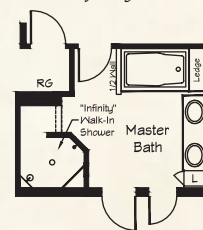


SAMANTHA

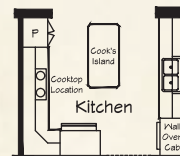
2412 sq. ft. First Floor Living Area

- 3 Bedrooms
- 2½ Baths

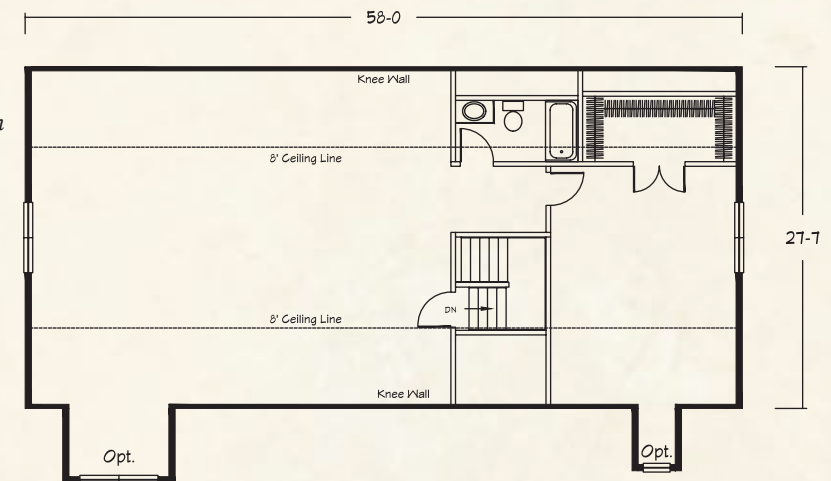
Optional Master Bath w/Infinity Shower



Optional Island Kitchen



(Includes prep for cook-top/wall oven)



SAMANTHA

1602 sq. ft. Proposed Upper Level

The OAKDALE II

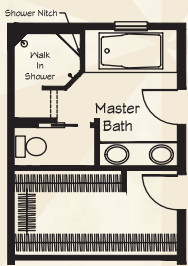
BONUS RANCH PLAN



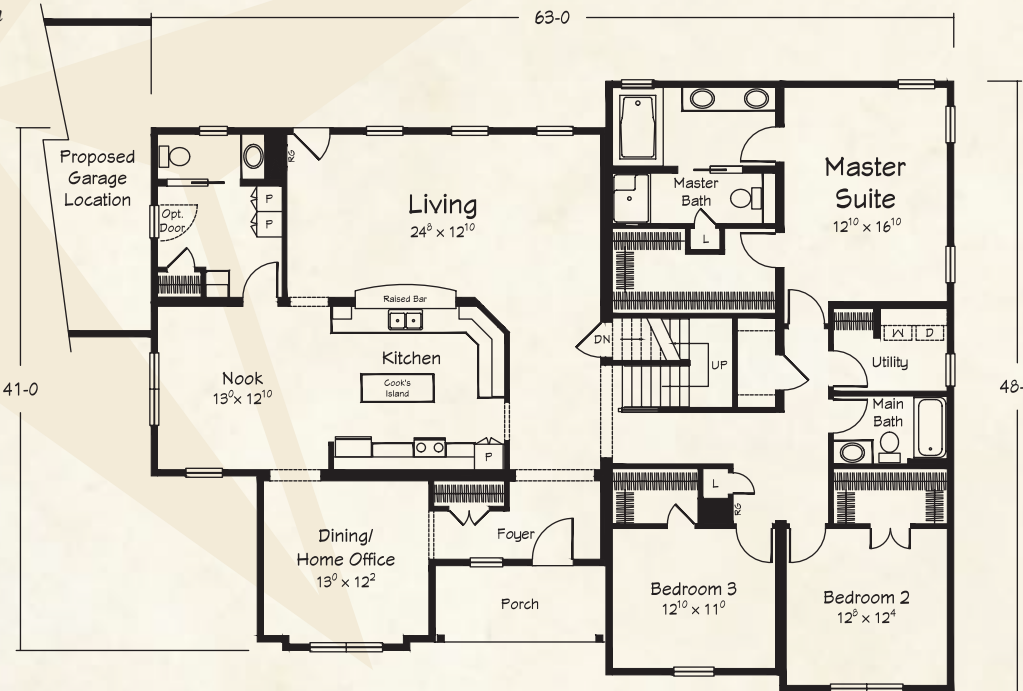
Stately



Optional Master Bath
w/Infinity Shower



Crawlspace Option



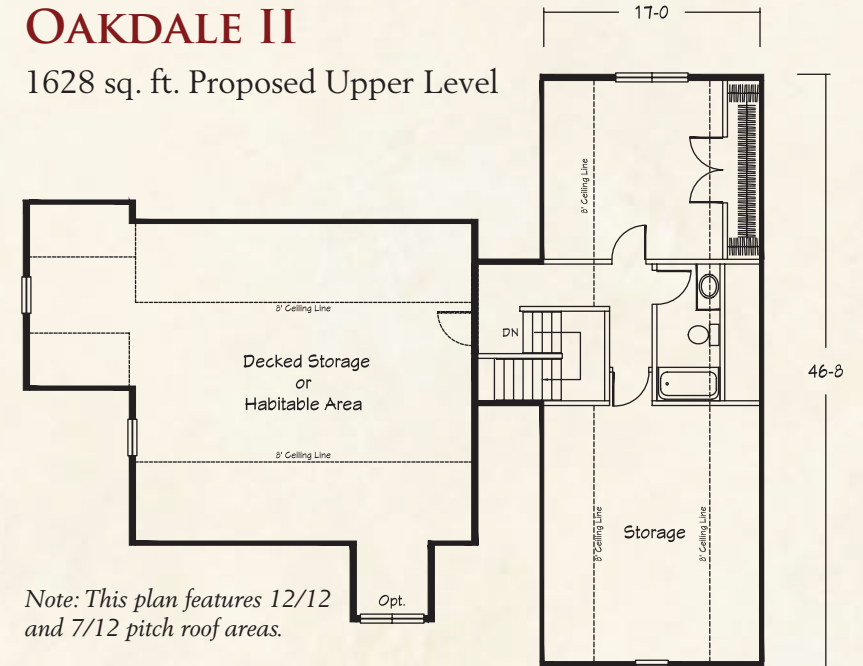
OAKDALE II

2557 sq. ft. First Floor Living Area

- 3 Bedrooms
- 2½ Baths

OAKDALE II

1628 sq. ft. Proposed Upper Level



Note: This plan features 12/12 and 7/12 pitch roof areas.

ABOUT RITZ-CRAFT CUSTOM HOMES

Founded in 1954, and still family owned and operated, Ritz-Craft specializes in “system built homes” that are custom built off-site in one of five climate controlled facilities. The components are then transported to the site, installed on the foundation and completed by your selected Ritz-Craft builder.

Ritz-Craft home plans offer wide variety and are designed to embrace each region’s architecture while offering many aesthetically pleasing and functional features. Building your new home with Ritz-Craft’s custom designed modules offers many advantages over conventional “stick by stick” site assembly. Our precision construction methods take place under roof in well lighted, climate controlled and efficient workstations that allow high quality and high efficiency. In fact, our quality assurance process includes code compliance inspections by a state licensed third party agency and over twenty-five key inspection checkpoints monitored by our in-house Quality Assurance Team. Ritz-Craft also utilizes many Green Friendly materials and processes to save energy, recycle materials, and to manage waste in an environmentally responsible manner.

When you choose Ritz-Craft, you’re selecting an experienced company with a commitment to quality and to the future. We have grown from a modest one-plant operation into a thriving enterprise with over one million square feet of climate controlled production space in five modern, highly mechanized plants. Some people ask if our homes are built as well as a site built home....and our proud reply is “yes, --- as well, and in many respects, better.” We say that with confidence knowing our process simply cannot be matched with in-field home building methods.

We’re proud of our custom built single story, Cape Cod style, and two story homes and we sincerely thank you for considering Ritz-Craft for your next home.



Paul D. John, President/CEO
Eric John, Vice President



RITZ-CRAFT FAMILY OF COMPANIES

Our family of companies also includes Ritz-Trans, Legacy Crafted Cabinets and Legacy Building Products.





**YOUR APPROVED
RITZ-CRAFT
HOMEBUILDER:**



Approved homebuilders are independent business entities and are not agents of Ritz-Craft Corporation.

Due to occasional updating of building codes and Ritz-Craft's continuous product improvement, specifications are subject to change without prior notification. Be sure to request a copy of current specifications from your selected homebuilder.

©2014 Ritz-Craft Corporation 101314

