

KITCHEN COMPACT

A STORIED HISTORY
WITH AN EVEN BRIGHTER FUTURE

SINCE 1937

NATIONWIDE FAMILY-OWNED MANUFACTURER
OF KITCHEN & BATH CABINETRY



Made in USA



GLENWOOD



For those who want a darker, chocolate color and up-to-date Shaker style, choose our best selling line, **Glenwood**. The clean, well-defined edges and ***recessed panel*** doors bring a touch of elegance to your home.

Door pulls not included.



Location @kitchencompact

We are located in Jeffersonville, Indiana, across the Ohio River from Louisville, Kentucky.



kitchencompact.com



WARMWOOD

COMING
SOON



Warmwood is coming soon. Not as dark as Glenwood, Warmwood's chestnut brownish tone, clean lines and **recessed panel** doors give you another choice in our most popular Shaker style. Door pulls not included.



American-Made @kitchencompact

Our cabinets are proudly made in the USA!



kitchencompact.com



BRETWOOD



Bretwood features a rich cinnamon color and *maple recessed panel* doors. With the perfect finish to bring out the beauty of maple, Bretwood conveys an upscale feel in your kitchen. Door pulls not included.



Original @kitchencompact

Check out our original Kompact Kitchen from 1937!



kitchencompact.com



CHADWOOD



A traditional classic with a golden oak finish, **Chadwood** is right at home in any kitchen. With its ***oak recessed panel*** doors, Chadwood can be designed and accessorized to fit any need, taste or budget.
Door pulls not included.



Loyalty @kitchencompact

Our employees average 15 years of service!



kitchencompact.com



MELLOWOOD



Mellowood is the perfect choice for contemporary or colorful decorating schemes. With its blonde color and *maple recessed panel* doors, Mellowood creates a stylish atmosphere for your home. Door pulls not included.



Family @kitchencompact

Founded by Dwight Gahm, we are now joined by a third generation!



KITCHEN COMPACT

kitchencompact.com

The Enduring Beauty of Wood

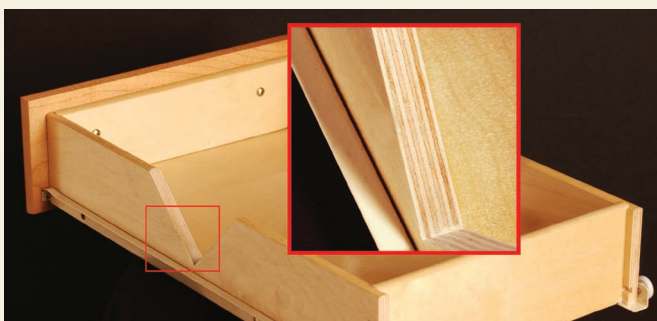


There's solid wood durability built into every KK cabinet. From the oak, maple or beech on the doors to the solid pine corner blocks on the base cabinets, each cabinet is built to last. Note these quality features:

- All frames are built of solid 3/4" hardwoods. Each rail is kiln-dried, joined by mortise and tenon, and then glued for added strength.
- Solid wood corner blocks are glued and power nailed.
- Solid wood toe kicks, 3/4" thick.
- Solid wood hanging strips on wall and base cabinets, located at the top and bottom.
- End panels consist of 3-ply construction, 1/2" thick engineered wood core with hardwood veneers.

All cabinets get stained and sealed and are protected with a durable topcoat. The result is a surface that is virtually "family-proof," resisting many household chemicals, water, alcoholic beverages, mild acids and even nail polish.

The result is more than just a kitchen you can cook in—it's a kitchen you can live in at a price you can live with.



And there's more. All Kitchen Kompact cabinets feature plywood drawers as a standard. A front-to-back epoxy-coated drawer system is securely attached to a solid wood strip in the back of the cabinet for stability, and years of smooth operation. We also offer universal design cabinets.

Kitchen Kompact, Inc. reserves the right to change design, specifications or materials without being obliged to incorporate such changes in products of prior manufacture. The artwork and specifications contained herein are the property of Kitchen Kompact, Inc. and may not be copied or reproduced without the written consent of the company.

Custom Touches

These accessories, available for KK cabinets, give any kitchen a custom look. Ask your dealer for details.

pantry roll-out trays



base roll-out trays



Middletons stem glass holder



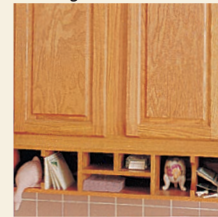
Middletons crown moulding



Middletons lattice wine rack



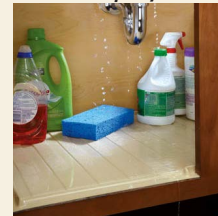
Middletons desk organizer



Middletons matching toe kick & quarter round



Rev-A-Shelf undersink drip tray



Rev-A-Shelf half moon shelf



Rev-A-Shelf pull-out filler

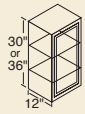


For more photos and information, visit us online!

middletonsmouldings.com
(517) 278-6610

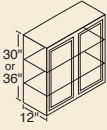
rev-a-shelf.com
(800) 626-1126

WALL Cabinets



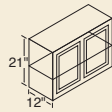
36" High

- 12WT* 27WT
- 15WT* 30WT
- 18WT* 33WT
- 21WT* 36WT
- 24WT*



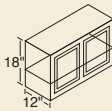
30" High

- 9W* 27W
- 12W* 30W
- 15W* 33W
- 18W* 36W
- 21W* 42W
- 24W* 48W



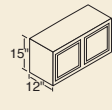
21" High

- 24R* 36R
- 30R 42R



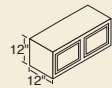
18" High

- 24Y* 36Y
- 30Y 42Y



15" High

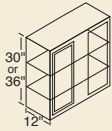
- 30X 36X
- 33X 39X



12" High

- 30X12
- 36X12

WALL CORNER Cabinets



36" High

- 24WCT* 36WCT*

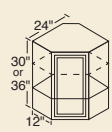


30" High

- 24WC* 42WC
- 36WC* 48WC
- 39WC

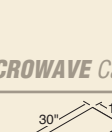
All can be pulled 4-1/2".

ANGLE WALL Cabinets



36" High

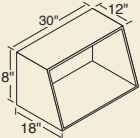
- 24AT



30" High

- 24A

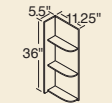
MICROWAVE Cabinet



- 30MW

For proper height, install under a 30X cabinet.

WALL WHATNOT Cabinet



36" High

- WWN

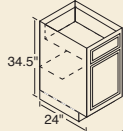
Trim to desired height and width.

BASE WHATNOT Cabinet

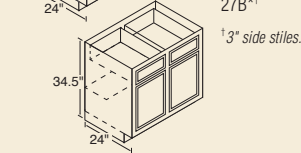


- BWN

BASE Cabinets

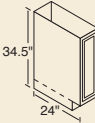


- 12B* 30B
- 15B* 33B[†]
- 18B* 36B
- 21B* 42B
- 24B* 48B
- 27B*[†]



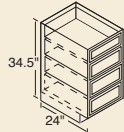
[†] 3" side stiles.

TRAY Cabinet



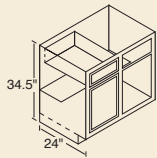
- 9T

DRAWER Cabinets

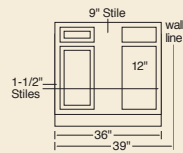


- 15D 24D
- 18D

BASE CORNER Cabinets

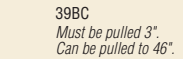


- 39BC 48BC
- 42BC



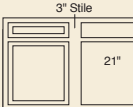
- 9" Stile
- 15"
- 42BC

Can be pulled to 49".



- 1-1/2" Stiles
- 12"
- 36" 39"
- 39BC

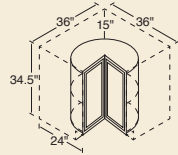
Must be pulled 3". Can be pulled to 46".



- 3" Stile
- 21"
- 48BC

Can be pulled to 49".

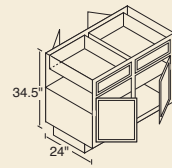
LAZY SUSAN CORNER Cabinet



- 36LS

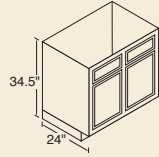
Shipped without finished ends.

PENINSULA BASE Cabinets



- 36B-P
- 48B-P
- 48BC-P

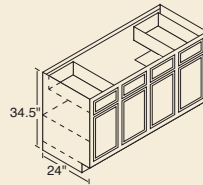
RANGE & SINK BASE Cabinets



- 30RBS 36RBS
- 33RBS[†] 42RBS

[†] 3" side stiles.

SINK BASE Cabinets



- 60SB 72SB

No shelf under sink - no back.

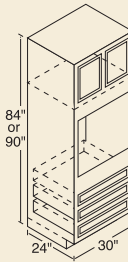
SINK FRONTS



- 18SF[†]

[†] Square edge.

OVEN Cabinets



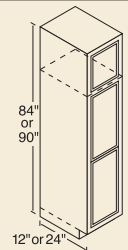
90" High

- 300UT

84" High

- 300U

BROOM Cabinets



90" High

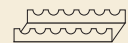
- 18BRWT 24BRBT
- 18BRBT

84" High

- 18BRW 24BRB
- 18BRB

No shelves included with broom cabinets. **Optional Shelf Kit** available.

ACCESSORIES

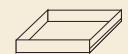


- Wine Rack (kit)



- Appliance Garage

To fit beneath 24A.

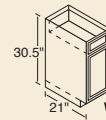


- Pantry/Base Roll-Out Tray

- 15BT 18BT 24BT

VANITY Cabinets

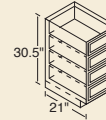
30.5" Standard



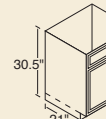
- V12B

- V12B V36SD
- V15D V42S[†]
- V24S V48S[†]
- V30S V30KH^{††}

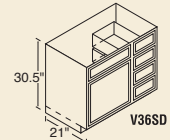
[†] Two outside working drawers.
^{††} Can be cut down 3" on each side.



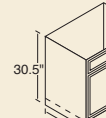
- V15D



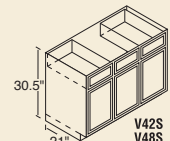
- V24S



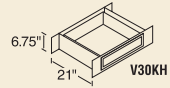
- V36SD



- V30S



- V42S
- V48S



- 6.75" V30KH

VANITY Cabinets

34.5" Tall

Tall vanities are only available for Glenwood and Warmwood.

All Standard and Tall Vanities 21" Deep

- V12BT V36SDT
- V15DT V42ST[†]
- V24ST V48ST[†]
- V30ST

[†] Two outside working drawers.

ADA ACCESSIBLE Cabinets

ADA accessible cabinets are available, on special order, in a limited number of sizes.

Cabinet Code Descriptions

For ease of ordering, the numerical designation indicates the cabinet width, the letter identifies the height.

^{*} Single door.



Kitchen Kompact, Inc.
911 East 11th St. (47130)
P.O. Box 868
Jeffersonville, IN 47131-0868
(812) 282-6681 Phone
(812) 282-7880 Fax

kitchenkompact.com



Kitchen Kompact is certified under the Kitchen Cabinet Manufacturers Association's Environmental Stewardship Program™.

[™] This certification has been recognized by the National Association of Home Builders' (NAHB) with the Green Building Award for Advocates of the Year for its environmental and sustainability achievements.