

Cornerstone Series

*As in nature, there is a
certain appeal and beauty
in Simplicity.*

Cornerstone Series

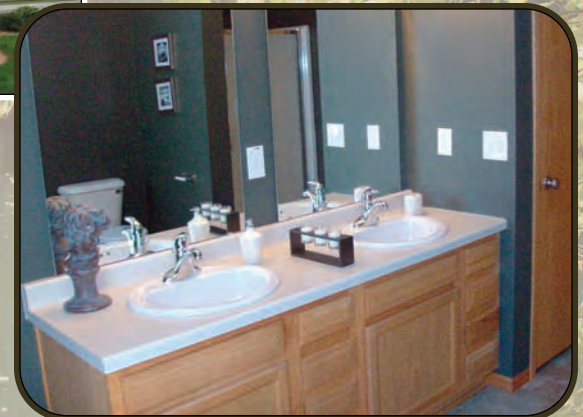
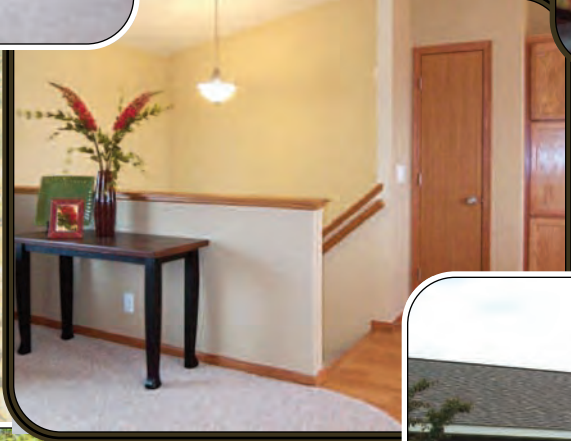
Basic, Simple Floor Plans Designed with Affordability in Mind



Stratford Homes[®]

LIMITED PARTNERSHIP

custom modular designs





Cornerstone Series

by **Stratford Homes**[®]

The Cornerstone Series offers....

Affordability
with basic, simple floor plans designed for the budget-minded homeowner.

Flexibility
to customize until the home is uniquely... Yours.

Energy Efficiency
through high performance features designed to reduce utility bills and conserve energy.

Exceptional Quality
by building to the highest standards without sacrificing workmanship or quality of materials.

Peace of Mind
in knowing your home will be backed by a manufacturer's one year limited warranty covering defects in materials and workmanship.

Sound Investment
through homeownership which is a solid stepping stone to a future of financial security and the single largest creator of wealth for many Americans.



Table of Contents

FLOOR PLAN STYLE	PAGE	FLOOR PLAN NAME	PAGE
Ranch	2—11	Alston	.5
Ranch (Narrow Lot)	12	Alston II	.3
Bi-Level	13	Bedford	.13
Two-Story	14—15	Blackstone	.6
		Flagstone	.4
		Gladstone	.7
		Livingston	.12
		Parnell	.10
		Rochester	.9
		Sandstone	.8
		Stanbury	.14
		Stanwick	.15
		Winston	.11
		Winston II	.2



Winston II



This plan features.....

- ❖ Main Level Laundry
- ❖ Grouped Bedrooms Layout
- ❖ Convenient Basement Access

1,064 Sq. Ft.

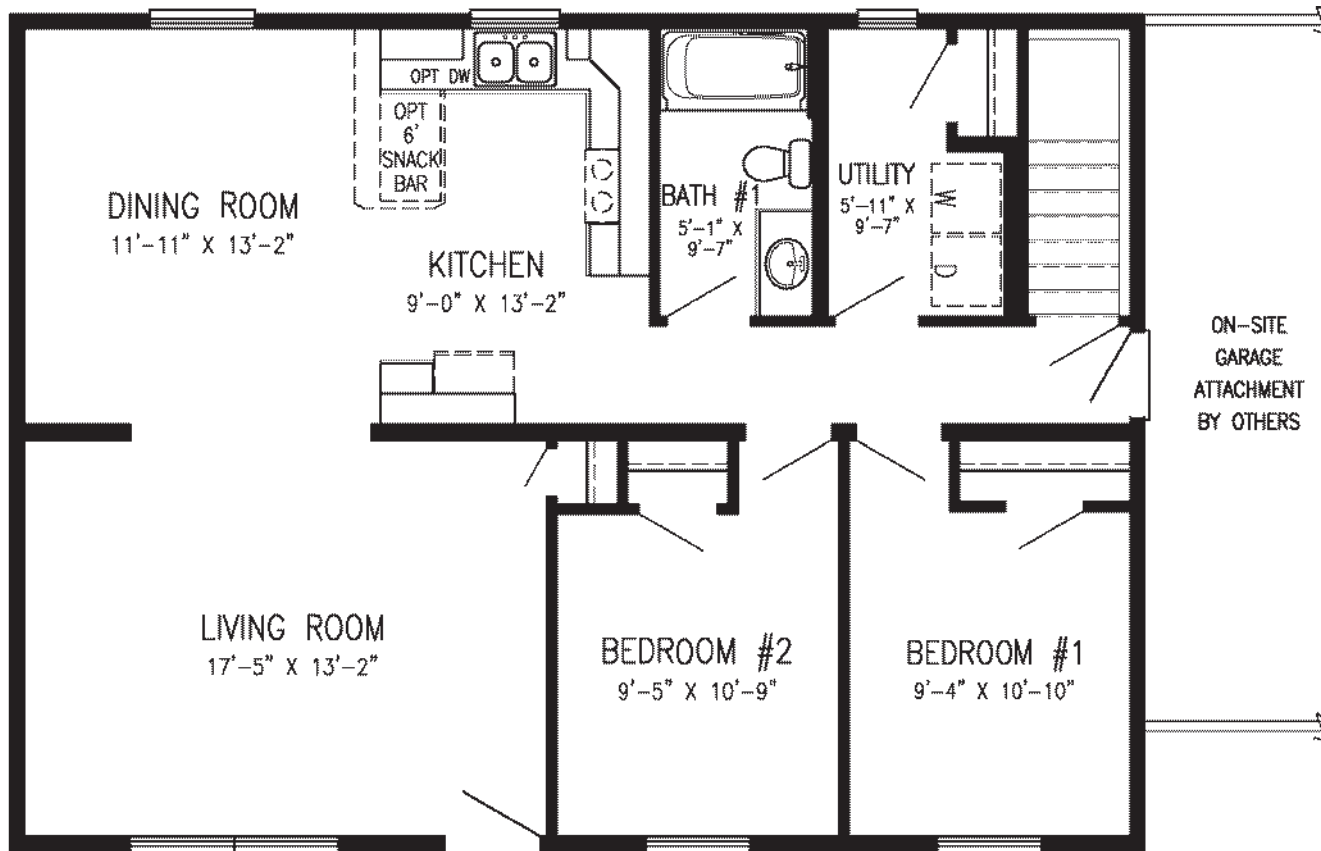
Bedrooms: 2

Bathrooms: 1

HOME SIZE

Depth: 28'

Length: 38'



Alston II



Artist rendering may contain optional features.

HOME SIZE

Depth: 28'
Length: 40'

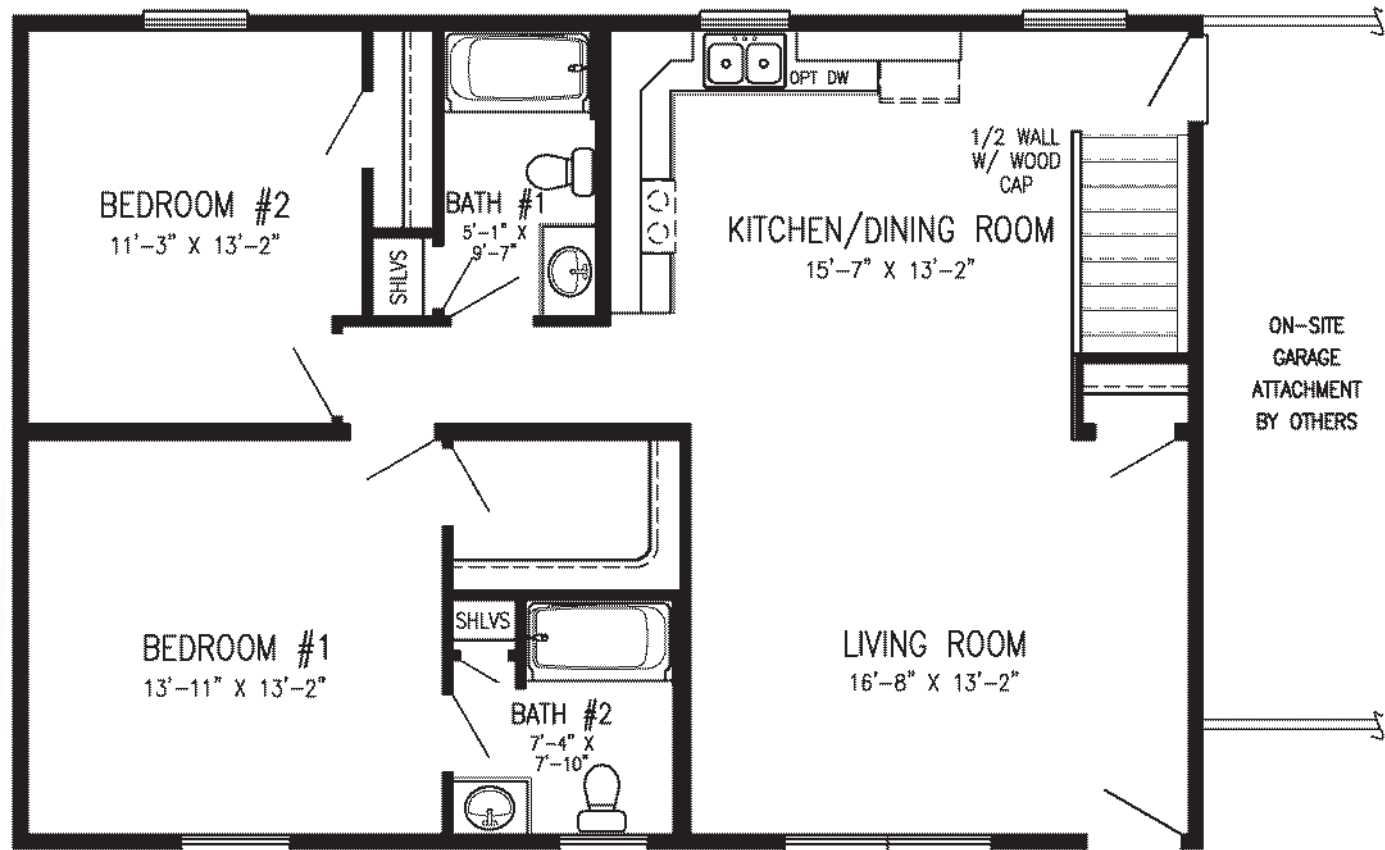
This plan features.....

- ❖ Master Suite
- ❖ Master Walk-In Closet
- ❖ Eat-In Kitchen
- ❖ Open Concept

1,120 Sq. Ft.

Bedrooms: 2

Bathrooms: 2



Flagstone



This plan features.....

- ❖ Grouped Bedrooms Layout
- ❖ Linen Closet
- ❖ Convenient Basement Access

1,092 Sq. Ft.

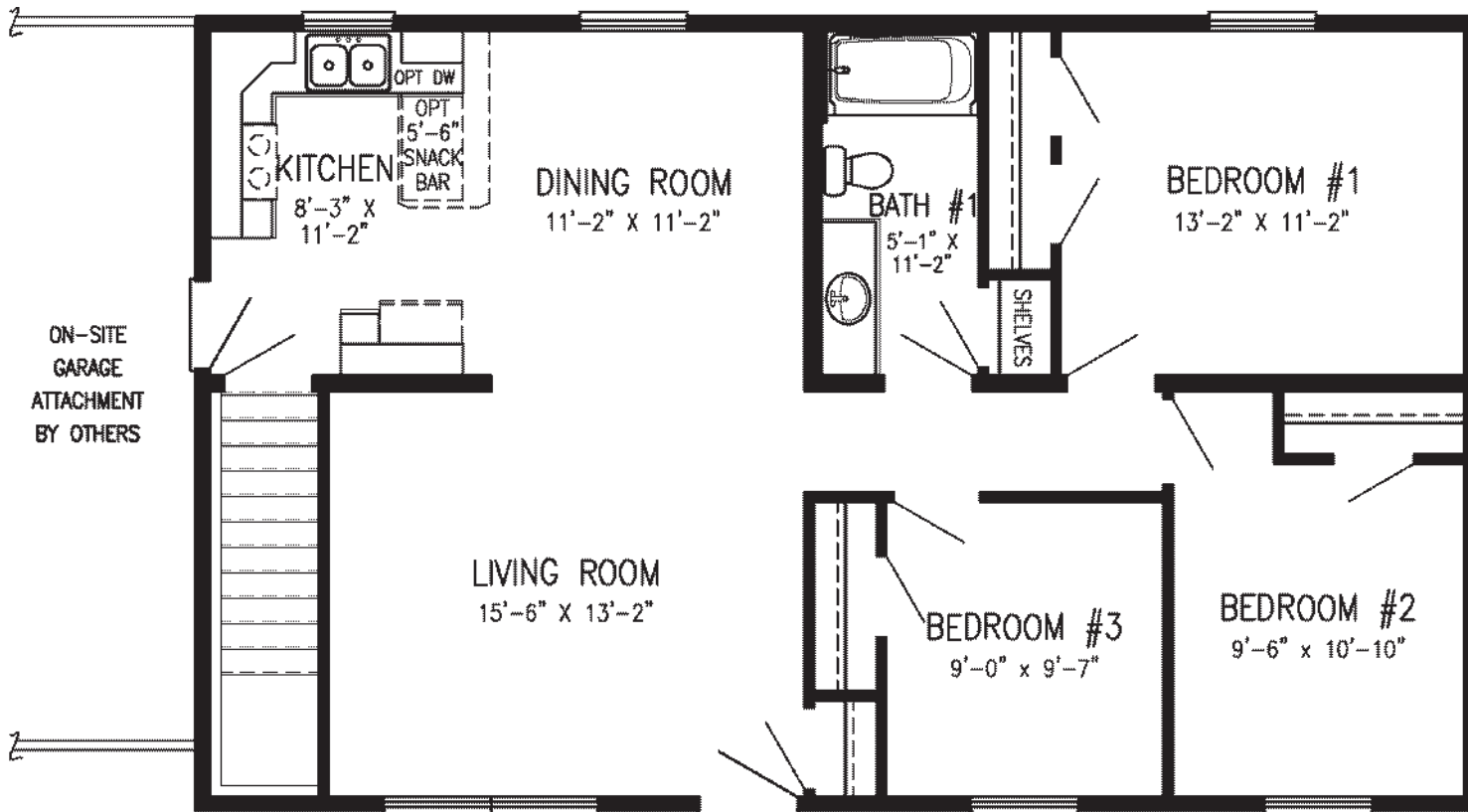
Bedrooms: 3

Bathrooms: 1

HOME SIZE

Depth: 26'

Length: 42'





Artist rendering may contain optional features.

Alston

This plan features.....

- ❖ Eat-In Kitchen
- ❖ Grouped Bedrooms Layout
- ❖ Open Concept

1,176 Sq. Ft.

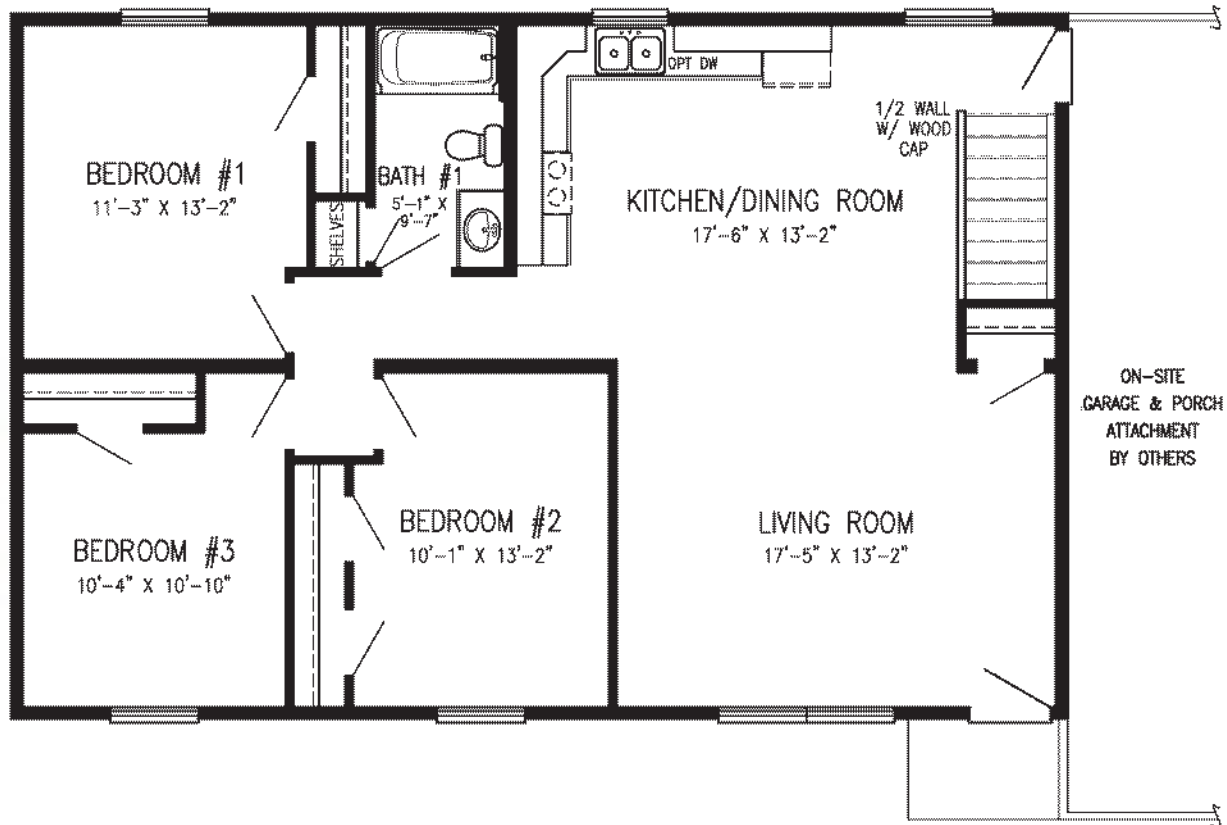
Bedrooms: 3

Bathrooms: 1

HOME SIZE

Depth: 28'

Length: 42'



Gladstone



Artist rendering may contain optional features.

HOME SIZE

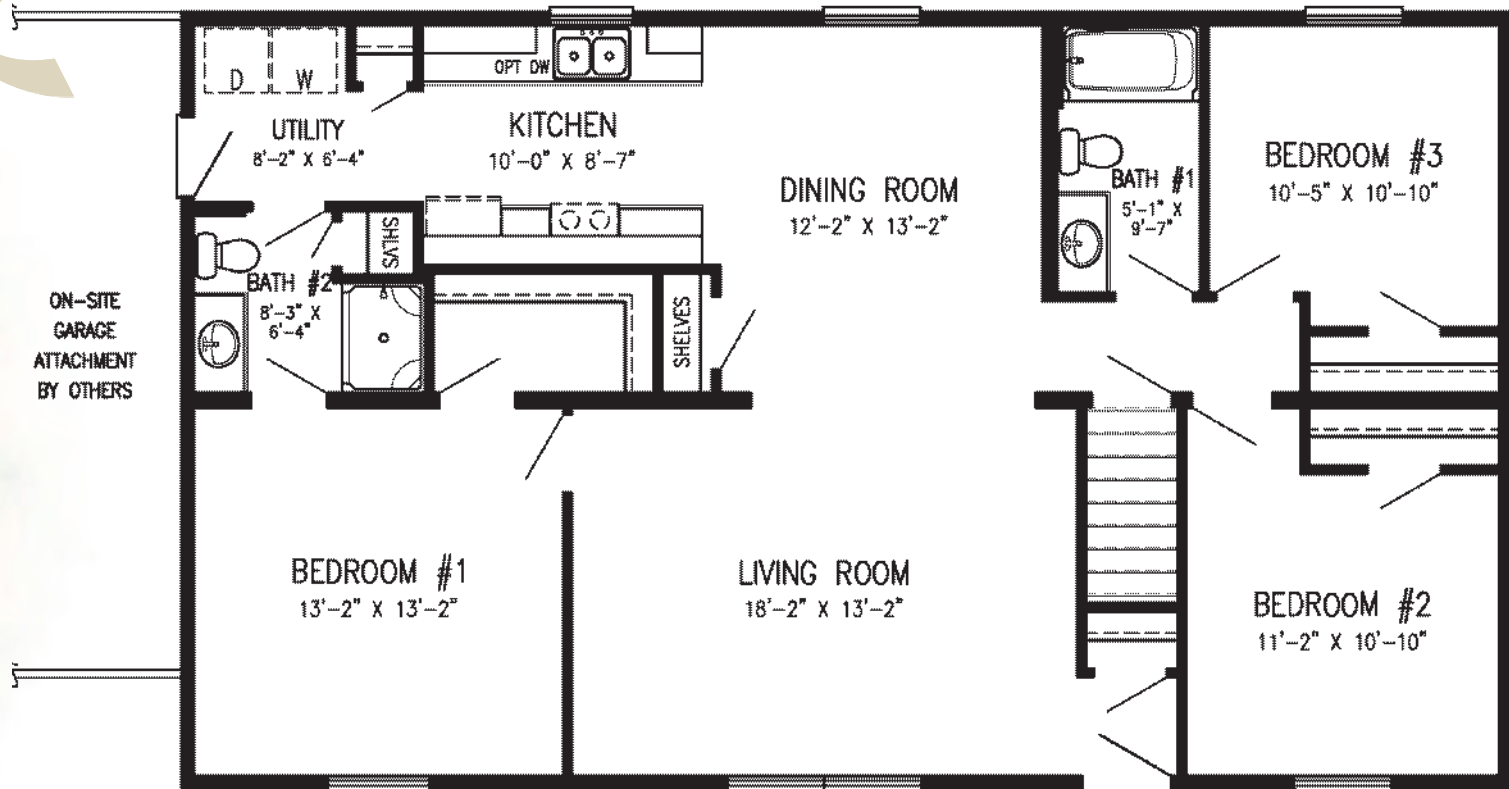
Depth: 28'
Length: 48'

This plan features.....

- ❖ Main Level Laundry
- ❖ Split Bedrooms Layout
- ❖ Master Walk-In Closet
- ❖ Continental Master Bathroom

1,344 Sq. Ft.

Bedrooms: 3
Bathrooms: 1-3/4



Sandstone



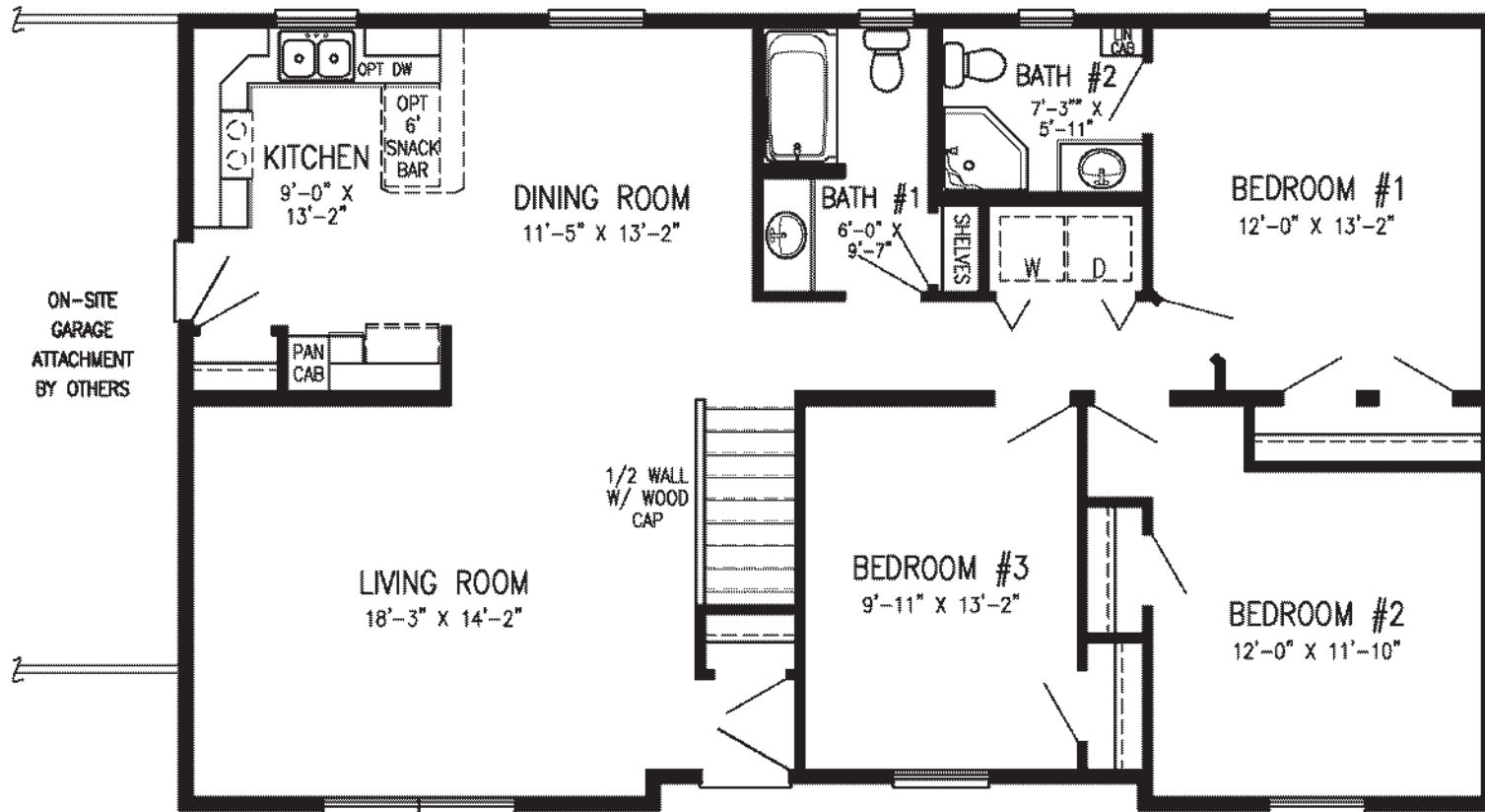
This plan features.....

- ❖ Master Suite
- ❖ Grouped Bedrooms Layout
- ❖ Main Level Laundry

1,375 Sq. Ft.
 Bedrooms: 3
 Bathrooms: 1-3/4

Artist rendering may contain optional features.

HOME SIZE
 Depth: 28'/29'
 Length: 48'



Rochester



This plan features.....

- ❖ Master Suite
- ❖ Master Walk-In Closet
- ❖ Open Concept
- ❖ U-Shape Kitchen with Snack Bar

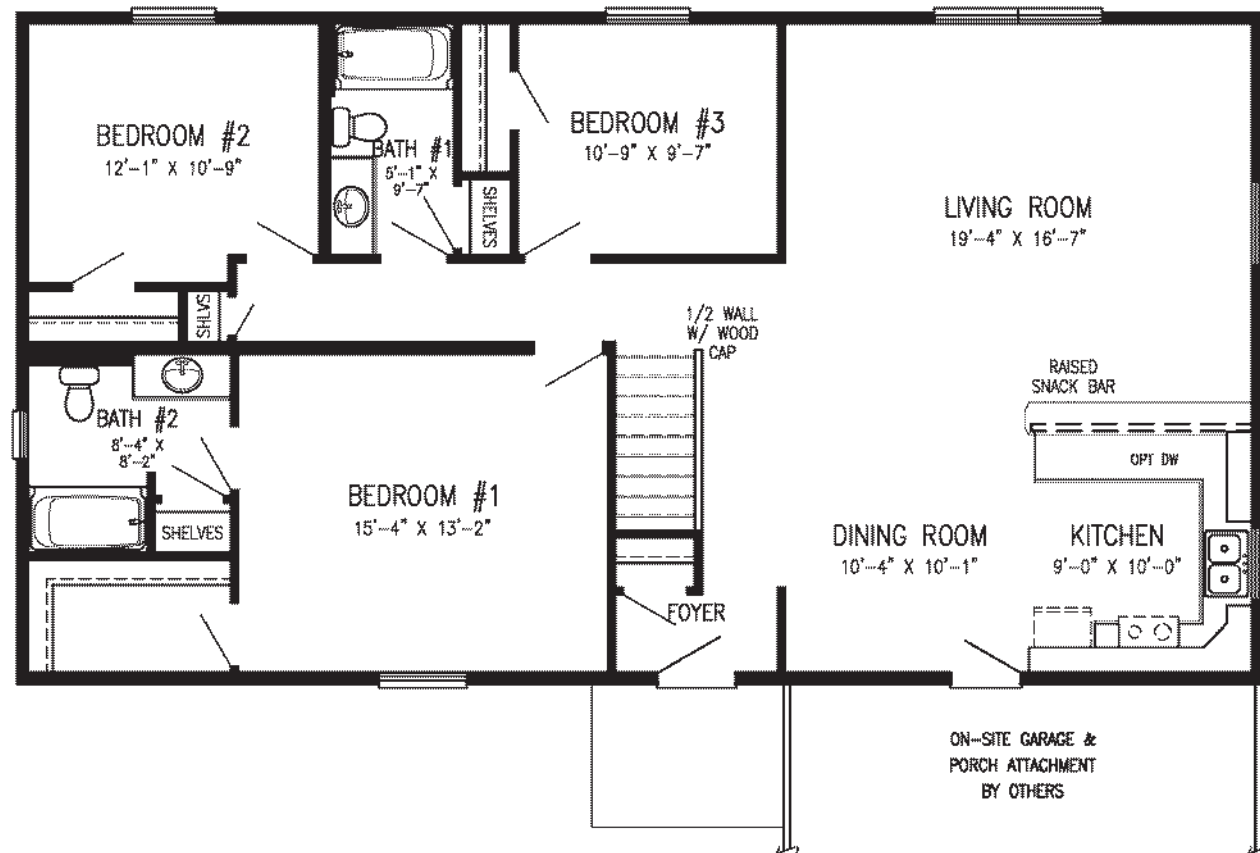
1,456 Sq. Ft.

Bedrooms: 3
Bathrooms: 2

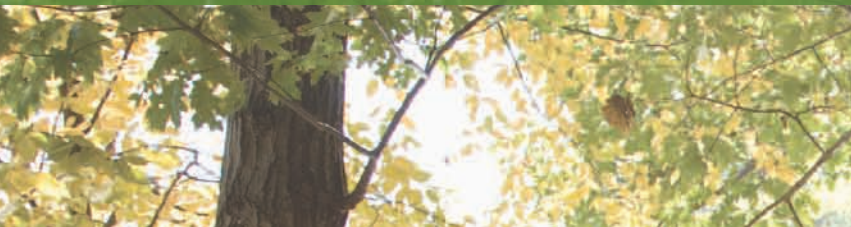
HOME SIZE

Depth: 28'
Length: 52'

Artist rendering may contain optional features.



Parnell



Artist rendering may contain optional features.

This plan features.....

- ❖ Flex Room or 3rd Bedroom
- ❖ 2 Walk-In Closets
- ❖ Master Suite
- ❖ Grouped Bedrooms Layout

1,456 Sq. Ft.

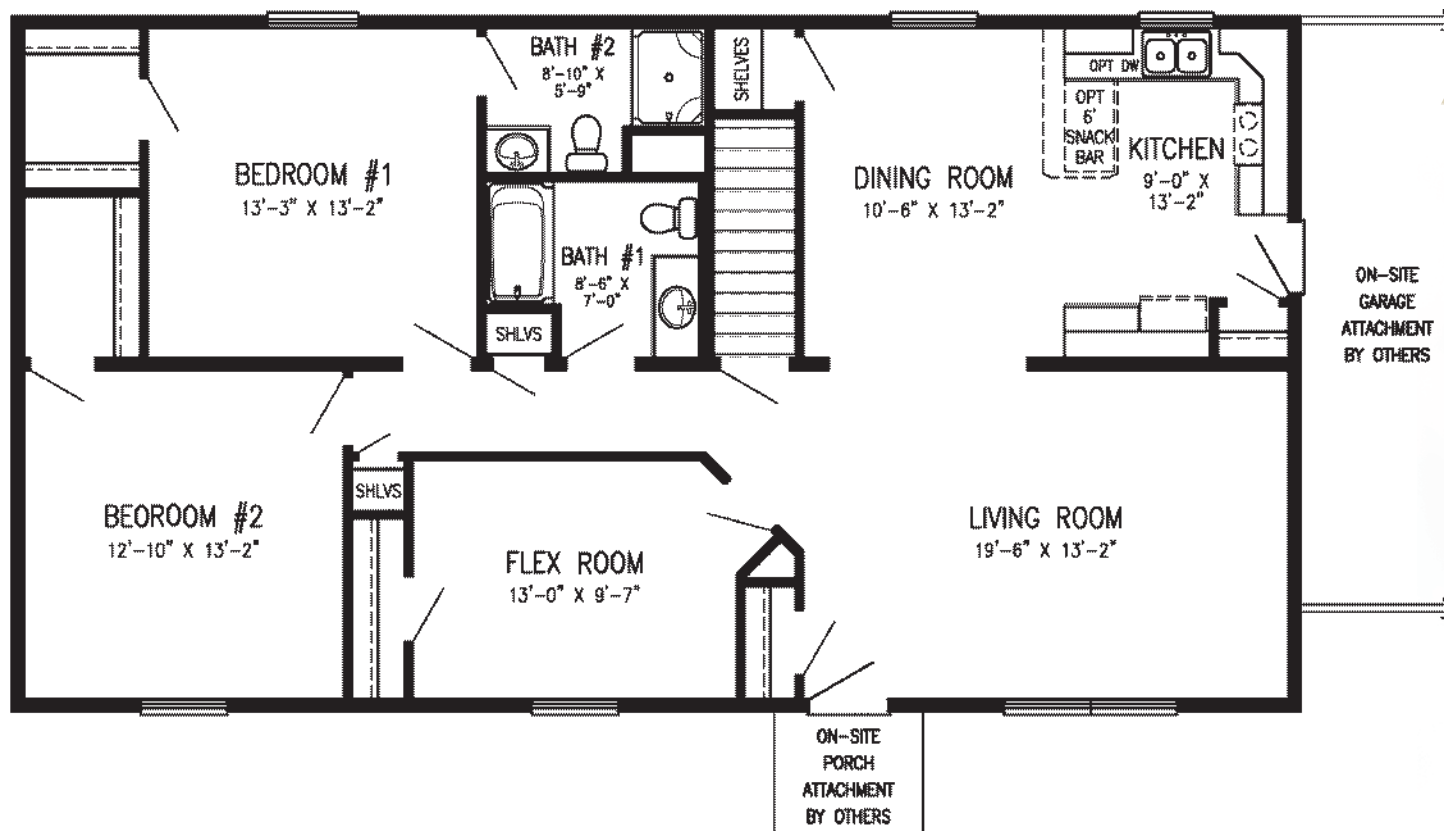
Bedrooms: 3

Bathrooms: 1-3/4

HOME SIZE

Depth: 28'

Length: 52'



Winston



Artist rendering may contain optional features.

HOME SIZE

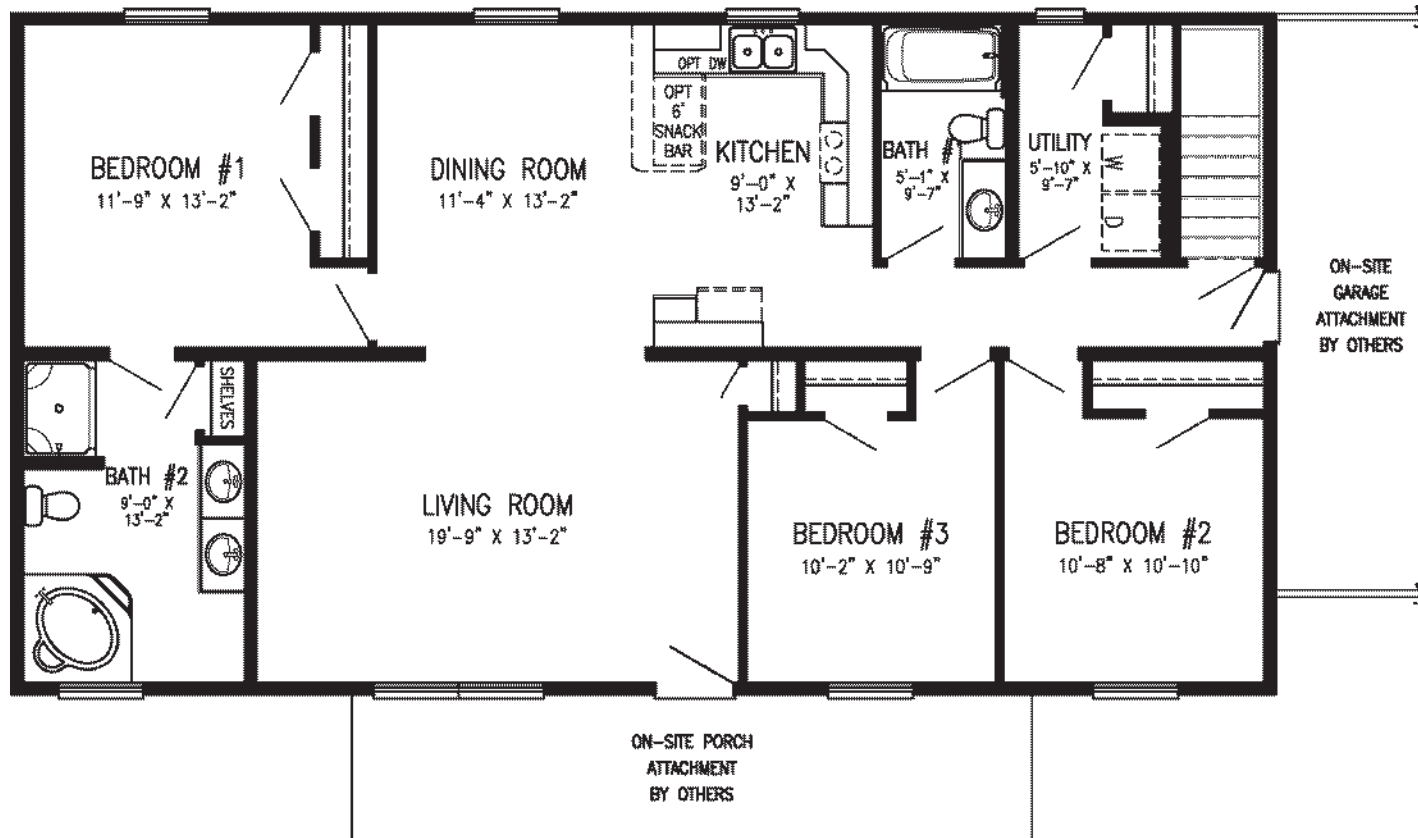
Depth: 28'
Length: 52'

This plan features.....

- ❖ Master Suite
- ❖ Split Bedrooms Layout
- ❖ Double Vanity Sinks
- ❖ Main Level Laundry

1,456 Sq. Ft.

Bedrooms: 3
Bathrooms: 2



Livingston



This plan features.....

- ❖ Open Concept
- ❖ Master Walk-In Closet
- ❖ Main Level Laundry
- ❖ Master Suite

1,344 Sq. Ft.

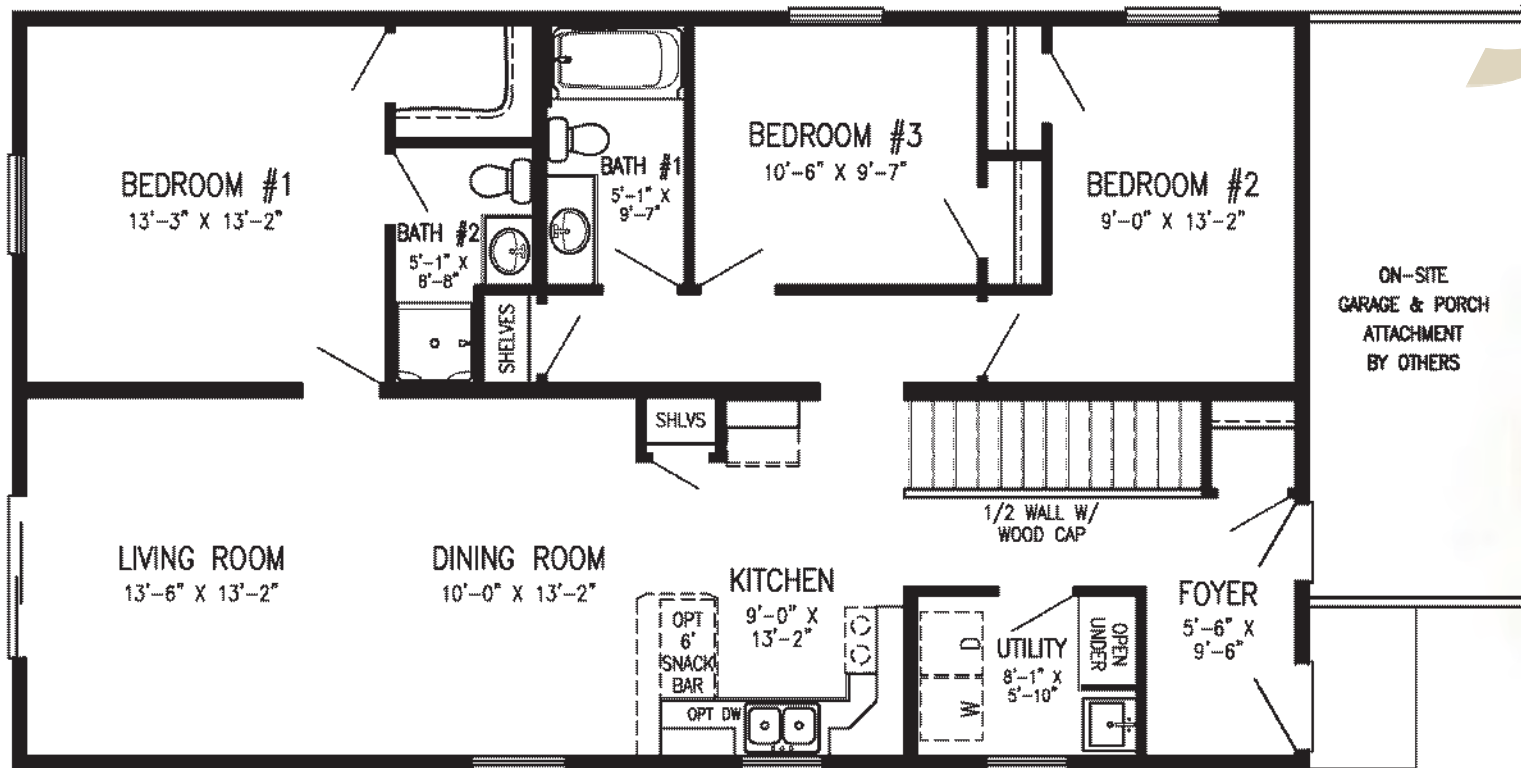
Bedrooms: 3

Bathrooms: 1-3/4

HOME SIZE

Depth: 48'

Length: 28'



Bedford



Artist rendering may contain optional features.

HOME SIZE

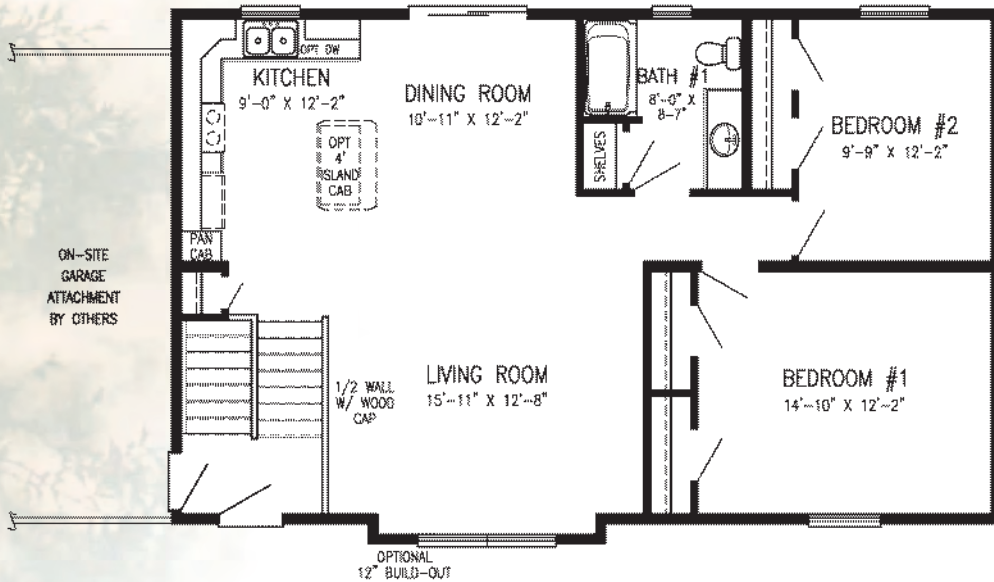
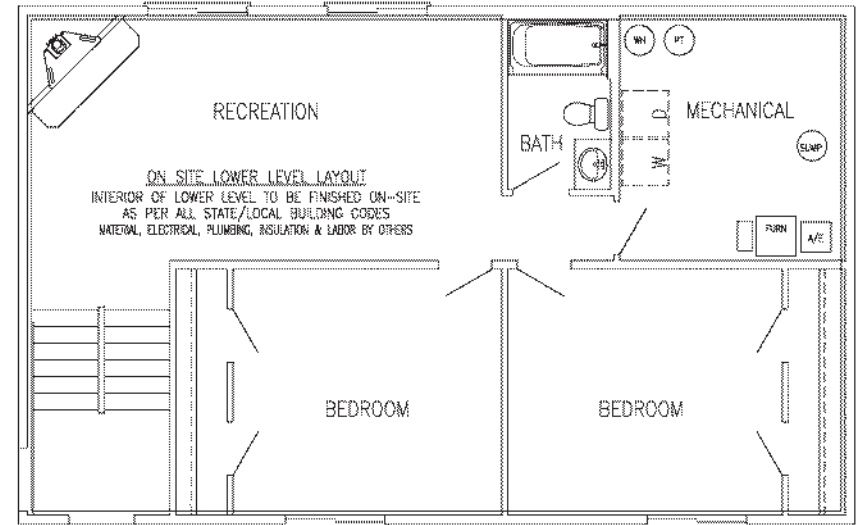
Depth: 26'
Length: 42'

This plan features.....

- ❖ L-Shape Kitchen
- ❖ Grouped Bedrooms Layout
- ❖ Open Concept
- ❖ Suggested Lower Level Layout

1,092 Sq. Ft.

Bedrooms: 2
Bathrooms: 1



Bi-Level

Stanbury



This plan features.....

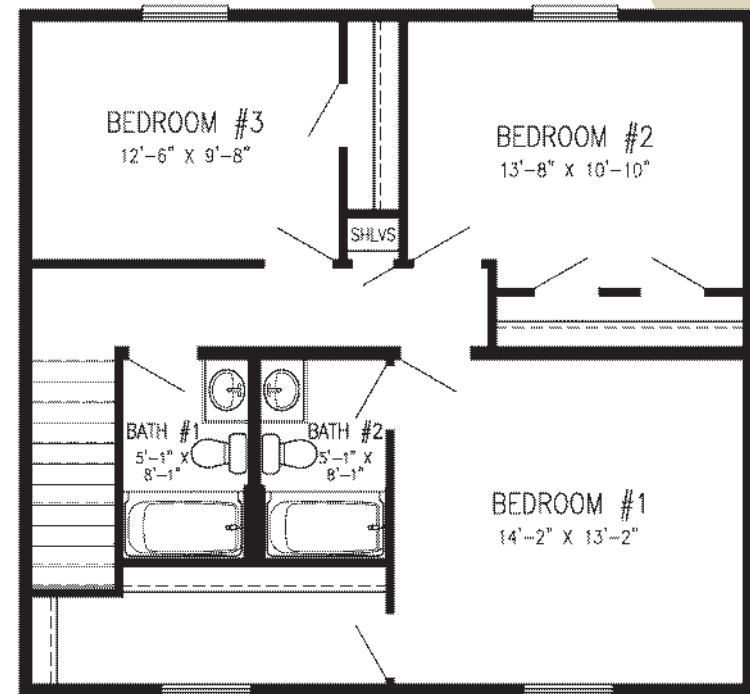
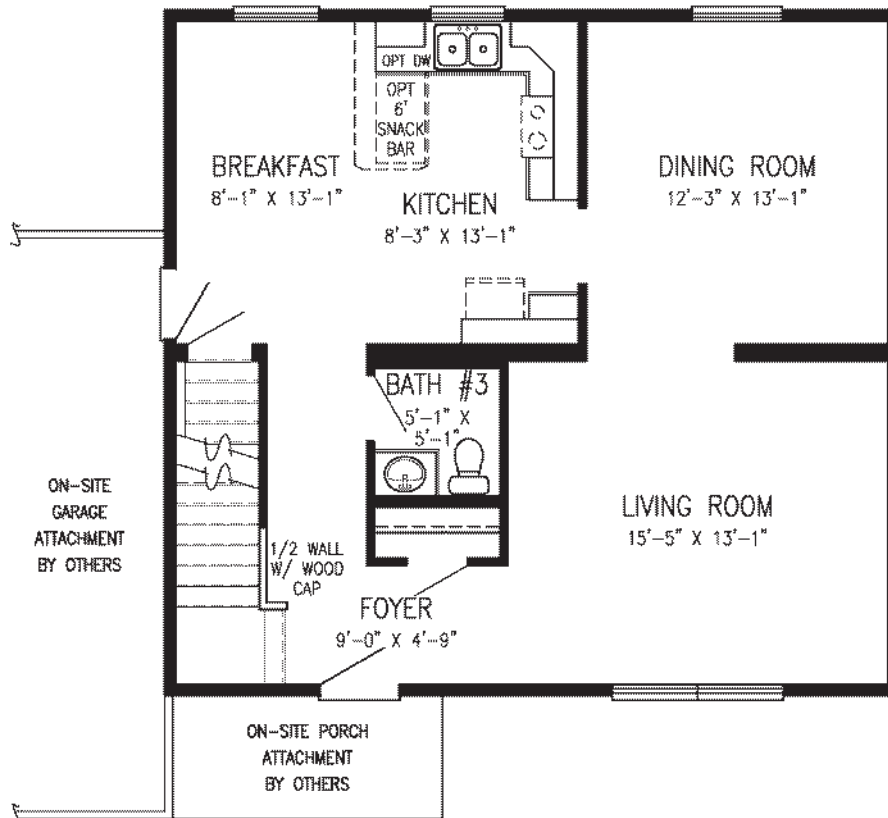
- ❖ Breakfast Nook
- ❖ Master Suite - 2nd Floor
- ❖ Master Walk-In Closet
- ❖ Formal Dining Room

1,680 Sq. Ft.

Bedrooms: 3
Bathrooms: 2-1/2

HOME SIZE

Depth: 28'
Length: 30'





Stanwick



HOME SIZE

Depth: 28'
Length: 32'

Artist rendering may contain optional features.

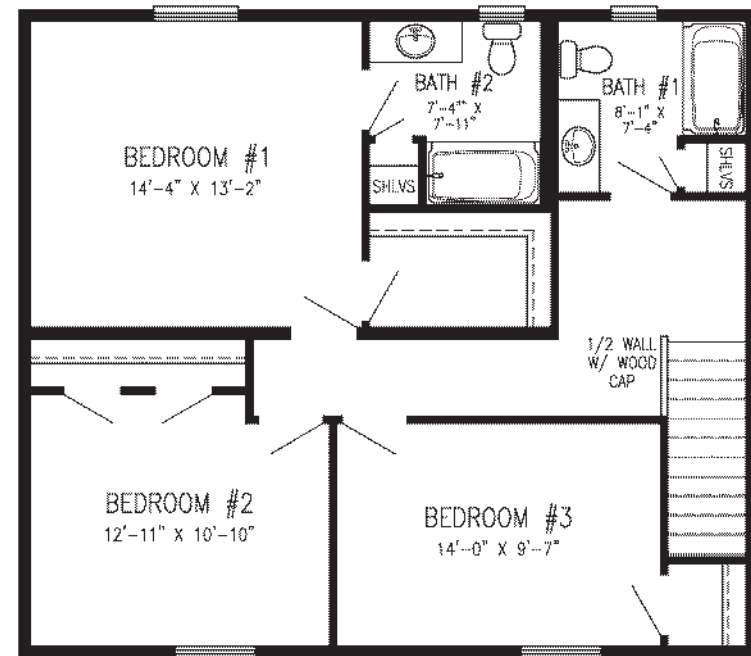
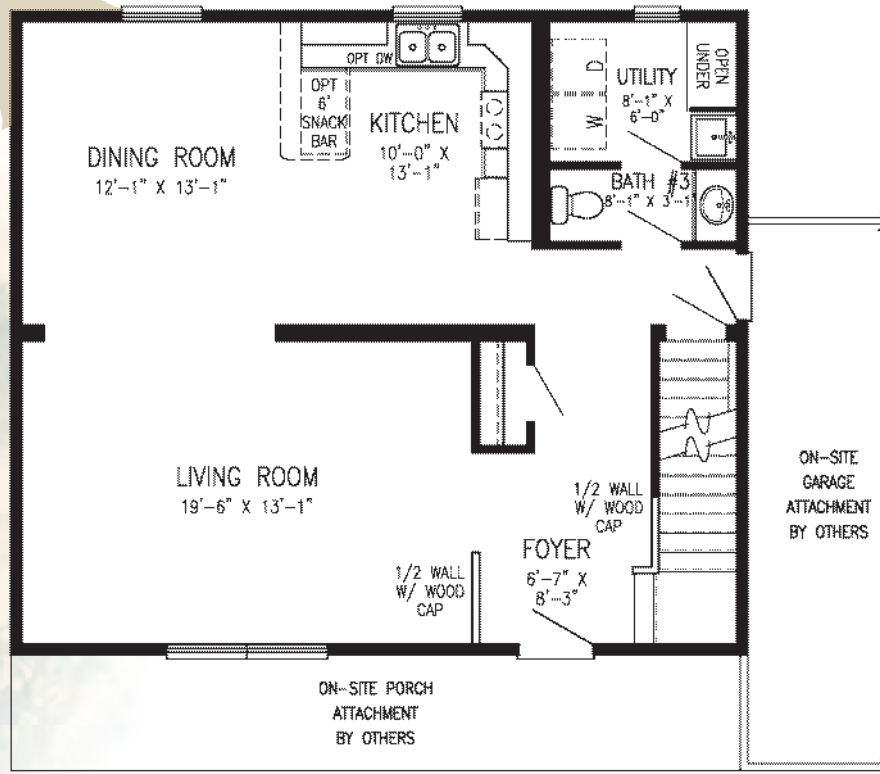
This plan features.....

- ❖ Main Level Laundry
- ❖ Master Suite - 2nd Floor
- ❖ Master Walk-In Closet
- ❖ Linen Closets

1,792 Sq. Ft.

Bedrooms: 3

Bathrooms: 2-1/2



Two-Story

The System Makes the Difference

The Stratford Homes® modular building system is efficient, cost effective and a model of quality control. From beginning to end, systems-built construction delivers numerous advantages that ensure customers receive greater value and the expected results.

GETTING STARTED

The first step of the home building process is selecting a local, independent Stratford Homes' Builder. They have the knowledge and expertise to help you select a home plan that will meet your needs and budget. They can assist with customizing a plan and selecting the individual building products. Stratford Homes' Builders are independent contractors — not employees or agents of Stratford Homes. We seek to find reputable organizations that are experienced and capable of handling the necessary general contracting. For your own peace of mind, we encourage you to check Builder references and talk to the local building officials. Past customers, in addition to building professionals, can share helpful information regarding their experience working with your chosen Builder. There is an advantage to you in working closely with your Stratford Homes' Builder as he/she will have a better understanding of local building codes affecting your property, site conditions and sub-contractors offering the best service in your community.

CUSTOMIZATION MADE EASY

With an extensive library of floor plans and complete design flexibility, you can enjoy a home that fits the way you and your family want to live. Stratford Homes has constructed over 11,000 "system built" modular homes since 1973. As a result of our longevity in this business, we have had many opportunities to experience numerous changes in building technologies, designs and products and have incorporated what we have learned into our designs and construction processes. Modifications to floor plans are made easy with the assistance and flexibility of Computer Aided Design (CAD) technologies. The many options available allow you to influence every element of your new custom home.





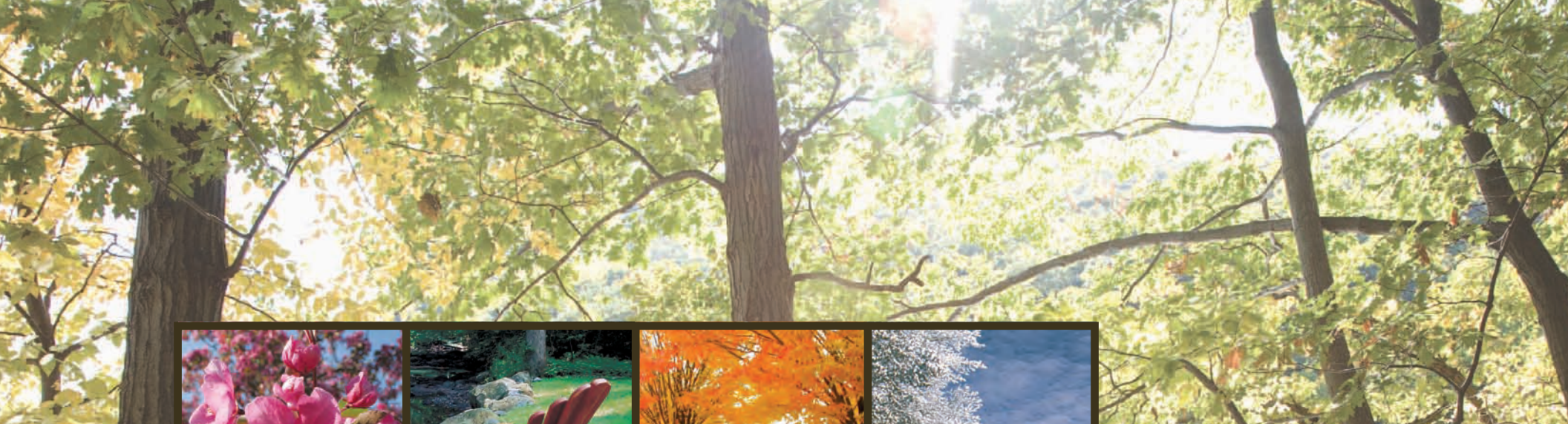
CLIMATE CONTROLLED ENVIRONMENT

Once you have approved the plans and building specifications, the in-plant construction phase begins. Your home will then be constructed as a series of modules inside the climate controlled environment of the manufacturing facility. The highly skilled and experienced craftspeople obtain consistent quality because each home is built indoors and not subjected to the elements of nature. Weather is often capable of causing numerous concerns with materials and workmanship quality during the rough-in stages of traditional site-built homes. Wet materials can lead to warping and the enhanced probability of mold growth. In the factory however, not only are the materials protected from the rain and snow, so are the carpenters, electricians and plumbers. The end result is a higher quality home built tighter and stronger.

EFFICIENT SCHEDULING

As your new “system built” modular home is being assembled in our construction facility, the concurrent site work is being completed. When the finished modules are ready to be transported to the building site, they are tightly weather-wrapped and loaded onto temporary transport frames. With precision accuracy, each module is lifted and set onto the foundation. The modular sections can be delivered and set onto the pre-arranged foundation at anytime of the year. The quick building time reduces or eliminates job site vandalism and material theft. Once the home is set, the final carpentry and mechanical tie-ins are completed. Thanks to a compressed site-work schedule, less materials stored at the building site, and the involvement of fewer contractors - there is less of a negative impact to the environment.





Cornerstone Series



www.stratfordhomes.com

402 S Weber Ave • P.O. Box 37 • Stratford, WI 54484
Telephone: (715) 687.3133 • Toll Free: (800) 448.1524
Email: info@stratfordhomes.com

