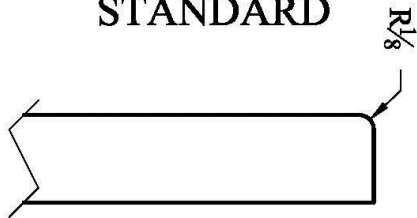


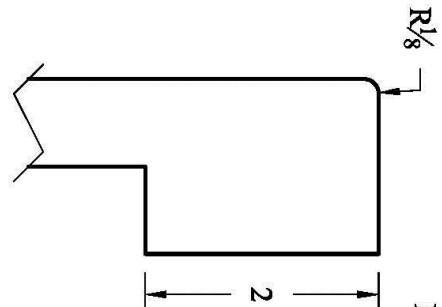
MARBLE EDGE STYLES

3/4" THICK EDGE
STANDARD

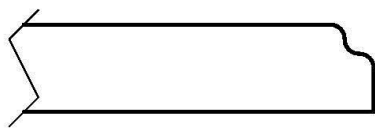


EASED

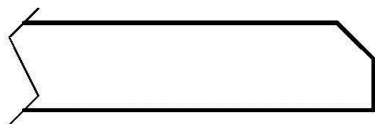
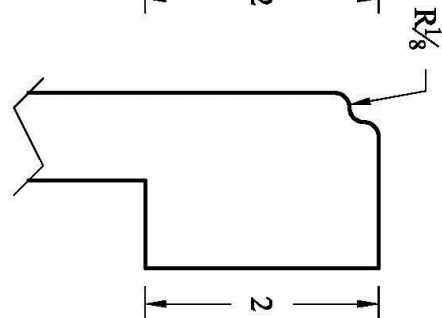
1-1/2" THICK
UP-CHARGED EDGES



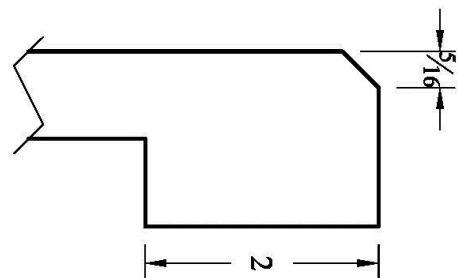
3/4" THICK
UP-CHARGED EDGES



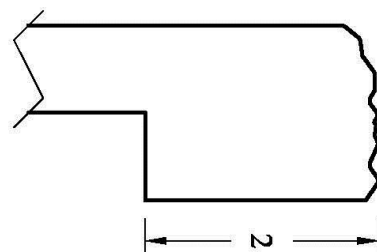
OGEE



BEVEL



ROCK



NOTE: 1-1/2" THICK BUILT UP EDGES ARE
DESIGNED TO SIT ON TOP OF CABINET